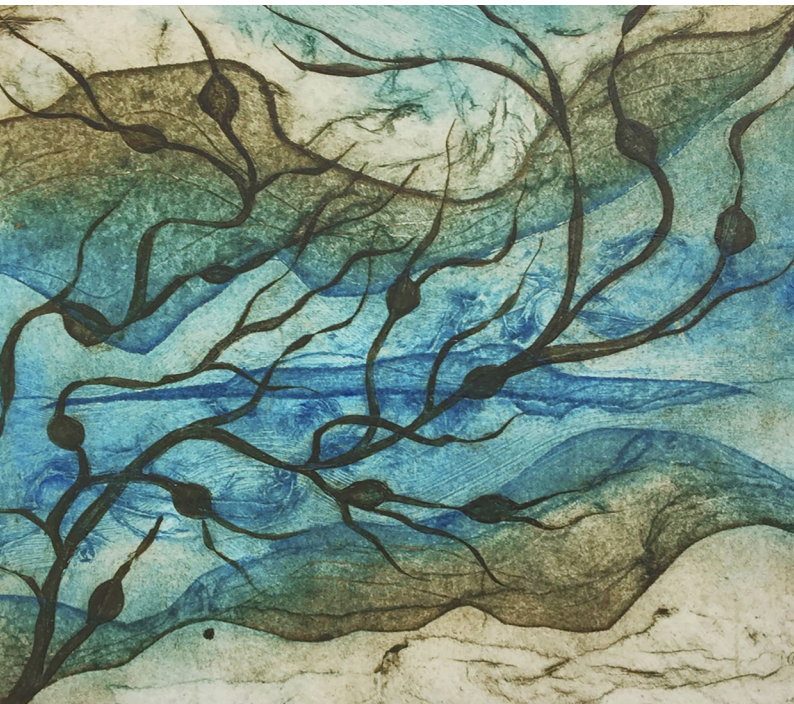


Artmap Argyll

Studio Directory 2020



Year of Coasts and Waters

● or ●● red dots after the Full members' names indicate the number of weekends the studios are open during the Open Studios 2020.

Artists & Venues

- | | |
|--------------------------|---------------------------------|
| 01 Kate Bauen-Hughes ●● | 16 Crarae Gardens ●● |
| 02 Ewen Munro ●● | 17 Karen Beauchamp ●● |
| 03 Lucy Gray ●● | 18 Kilmartin Museum ●● |
| 04 Fiona Macrae ●● | 19 Louise Oppenheimer ●● |
| 05 Liz Gaffney-Waite ● | 20 Ross Ryan ●● |
| 06 Rockfield Centre ●● | 21 Nils Aksnes ●● |
| 07 Mogs Mellor ●● | 22 Caroline Hunter ●● |
| 08 Agnieszka Mizia ●● | 23 Jane Smith ●● |
| 09 Rory Gibson ●● | 24 SNH Art Trail at the Mill ●● |
| 10 Sarah Ferguson ●● | 25 Susannah MacMillan ● |
| 11 Loch Melfort Hotel ●● | 26 Caroline Plummer ●● |
| 12 Kat Robertson ●● | 27 Susan Berry ●● |
| 13 Lynn McGregor RSW ●● | 28 Melanie Chmielewska ● |
| 14 Colin Woolf ●● | 29 Lesley Carruthers ●● |
| 15 Lizzie Rose ●● | 30 Richard Kennedy ●● |

Please note: Many artists do not have card facilities should you wish to make a purchase. Some have online payment options while some can only receive cheques or cash.

Open Studios 2020

Friday 21st to Monday 24th August.

Saturday 29th August & Sunday 30th August.

10am - 5pm

We are pleased to invite you to our twelfth annual Red Dot Studio Trail. This is one of Argyll's premier visual arts events that allows members to showcase their work and provides a substantial boost to the local economy. Many studios are open for both weekends of the event following the success of last year's trial to add a second weekend. All the studios will be open on the August Bank Holiday weekend, but please check if a studio is open on the second weekend before you decide to visit.

The red dot trail guides visitors to artists' studios by a network of numbered red dots and direction arrows. A warm welcome is extended to art lovers at studios and venues from Glencoe in the north to Kilberry in the south and for the first time this year we have a studio on Tiree!

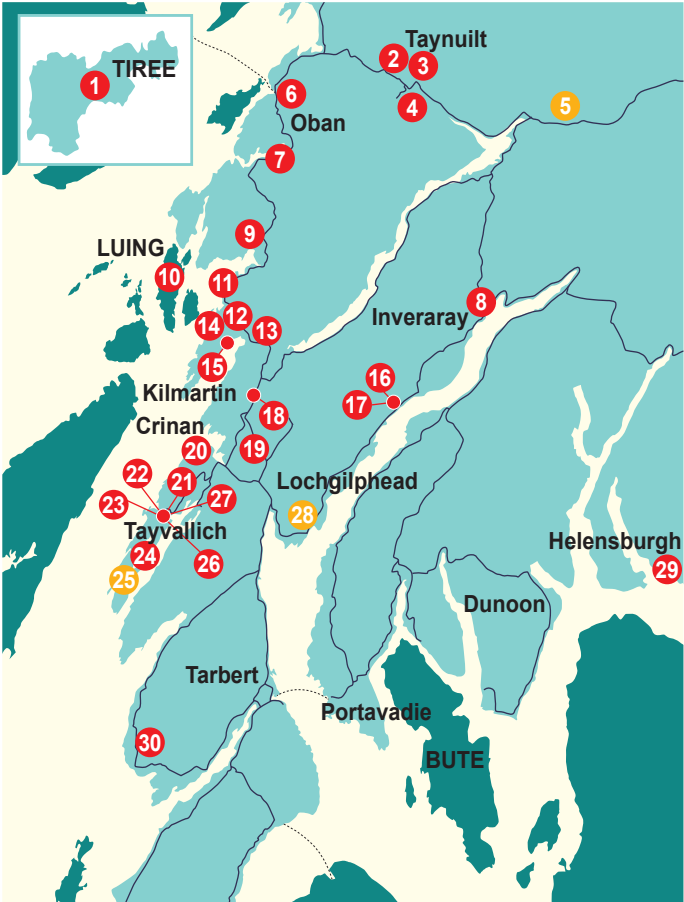
The six day event over two weekends is an opportunity to visit artists in their studios, to see how they work, without the pressure to buy – although if you do fall in love with a piece, you have the joy of meeting the artist and seeing how the work is made. In many studios there are opportunities to try out the technique or craft the artist employs and to browse their sketchbooks to see how they develop their ideas.

We hope you enjoy Argyll's cultural diversity and to say thank you for visiting the Open Studio event we are offering a prize draw of £200 to spend in the studio of your choice. To enter just pick up a red dot sticker available in every studio and collect 8 or more for your chance to win.

Some Artmap members and invited artists are also showcasing work over the summer at Taynish NNR as part of the SNH Taynish Art Trail. Their work is based on the theme of Transformation.

Please keep this brochure for further reference because most of the studios can be visited all year round by appointment.

● Open August 21st - 24th ● Open August 21st - 24th and 29th - 30th



Open Studios 2020

Coronavirus advice

All the studios and venues that are open this year have had the additional challenge of planning for the event with the coronavirus restrictions in place. We have reviewed the advice in the Route Map published by the Scottish Government, NHS Inform and local guidance published by Argyll and Bute Council.

What are the artists doing for you?

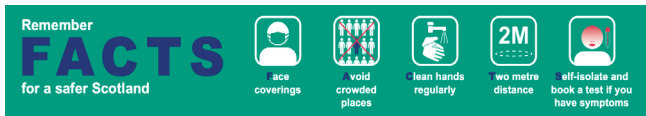
Each studio is unique, that is part of the attraction of the open studios event. Each artist will have specific rules and guidance in place for their studio based on the guidance from Scottish Government and NHS Inform. This may involve measures such as one-way systems, limits on numbers of people, etc.

Please respect these rules as they are designed to protect your health, the health of the artist and others who share their studio space.

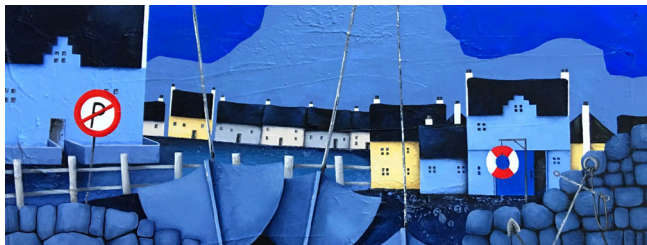
What you need to do

Please visit **www.nhsinform.scot/coronavirus** before planning your studio visits to make sure you are clear about the latest advice.

Please follow the rules regarding physical distancing and basic hygiene advice at all times when visiting studios and venues. You may also wish to carry a supply of hand sanitiser gel with you.



With everyone following the Government guidance we expect the Open Studios event to take place safely; protecting the health of artists and visitors.



Born and raised in Glasgow, Kate received her first BSc in her 20s and went on to finely develop her artistic career alongside activities as a colour chemist which she utilizes today in her artwork to create her distinctive Neo-Naïve style. After studying with OCA, and privately at various master ateliers in Switzerland, 2018 saw Kate move her studio to the Isle of Tiree.

Opening Arrangements:

- Friday 21st to Monday 24th August
10am - 5pm
- Saturday 29th August to
Sunday 30th August
10am - 5pm.

Address: Tiree Art Studio, Airport View,
Crossapol, Isle of Tiree PA77 6UP.

Directions: Follow the signs for Tiree
Airport. Airport View and Tiree Art Studio,
is the last house before the turnoff onto the
Airport Road.

W www.BauenArt.com

E kate@bauenart.com

**Opening Arrangements:**

- Friday 21st to Monday 24th August
10am - 5pm
- Saturday 29th August to
Sunday 30th August
10am - 5pm

Address: c/o Airds Bay House,
Taynuilt, Argyll PA35 1JR.

Directions: From Oban, Take the A85 north, continuing through Connel towards Taynuilt. Almost immediately as you enter the 30mph zone for Taynuilt, turn left (sign post, Airds Bay). Continue down this single track road then taking the first left (stone gate posts, open gate). You will come to a fork in the lane where you will see the Airds Bay House. Please keep left.

Ewen's passion for his photography began whilst studying woven textile design in the early 1980s. His skill in creating inimitable images has developed from a close interest in the superlative characteristics of light found in Argyll, the Highlands and around the Islands of the Hebrides. Add rich textures & patterns to the unique colours of rust and all things old and you discover wonderful photographic imagery that Ewen has fashioned during his adventures around Scotland.

W www.ewenmunrophotography.com
E info@ewenmunrophotography.com
T 01631 569632
M 07795604455



Lucy Gray completed a Fine Art Sculpture Degree at Central School of Art where she achieved a 1st class Honours Degree. Following a printmaking Diploma she began her training in the restoration of lacquered and gilded surfaces. The influences of her continued work in this field can frequently be found in her sculpture.

"In my work I translate an idea through natural forms, capturing the tipping point, the metamorphosis"

Opening Arrangements:

- Friday 21st to Monday 24th August
10am - 5pm
- Saturday 29th August to
Sunday 30th August
10am - 5pm

Open by appointment outwith Open studio event.

Address: Airds Bay House,
Taynuilt, Argyll PA35 1JR.

Directions: From Oban, take the A85 towards Connel. Continue through Connel. Just as you enter the 30mph zone for Taynuilt, turn left (sign post, Airds Bay). Take the first left, (stone gate posts, open gate) when you come to the fork, where you will be able to see the house, Keep left.

W lucygraysculpture.com

E graylucy@live.co.uk

T 01866 822286

M 07934421784



Opening Arrangements:

- Friday 21st to Monday 24th August
10am - 5pm
- Saturday 29th August to
Sunday 30th August
10am - 5pm

Open by appointment outwith Open studio event.

Address: Achnahannait, Glen Lonan, Taynuilt, Argyll PA35 1HY.

Directions: Turn off beside the Taynuilt Hotel to Glen Lonan. Approx 1 Mile up glen road.

W www.fionamacrae.com

M 07743378671

Fiona's paintings are becoming less about fish, lemons and pots and more to do with colour, form and space, with an apparent simplicity of construction. Although they are still life paintings their roots are in the natural environment. Spring greens, summer blues, autumn hues and winter days.



I have been a Textile Artist full time since 1996 and began my textile exploration through felt making and spinning and weaving.

Heartfelt Studio is a hidden gem of textile interest in Argyll.

Much of my present work is imprinting and dyeing with local natural plant materials.

We have our own dye gardens here at Dalmally Railway Station grounds as well as native sheep which provide wool that we process here. Come and visit, open year round.

Opening Arrangements:

● Friday 21st to Monday 24th August
10am - 5pm

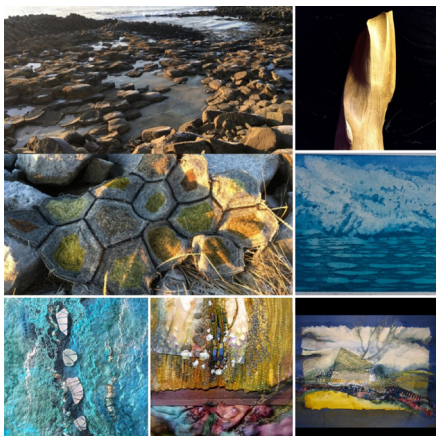
Open by appointment outwith Open studio event.

Address: Dalmally Railway Station, Dalmally, Scotland PA33 1AA

W www.heartfeltbyliz.com

E info@heartfeltbyliz.com

T 01838 200934



Opening Arrangements:

- Friday 21st to Monday 24th August
10am - 5pm
- Saturday 29th August to
Sunday 30th August
10am - 5pm

Address: Oban Communities Trust,
Linnthu House, 19 Stevenson Street,
Oban PA34 5NA.

Directions: The Rockfield Centre is located on the corner of Stevenson Street and Hill Street, Oban. Stevenson Street runs off the A85 (George Street).

W www.therockfieldcentre.org.uk

E arts@therockfieldcentre.org.uk

The Rockfield Centre is looking forward to welcoming both returning artists, as well as some new ones, to its shared open exhibition space this year. There will be four artists based at the centre; all local to Oban and reflecting a range of media and styles including sculpture, jewellery, textile design, printmaking and spinning/knitting.

Detailed plans have been affected by the response to the coronavirus as Rockfield is a key organisation in the community response.

For further details of the artists and artworks featured at the Rockfield Centre, please refer to the profile page on the Artmap Argyll website for up to date information before you visit.



I paint under my nickname, 'Mogs'. I have always had a passion for art. I read History of Art at Edinburgh University and graduated with an MA in 1980. Recently I have tried to make more time for painting. I enjoy experimenting with styles and mediums. I get inspired by something I see and then try and paint it. I love trying to capture the light on the hills and on the sea.

E mogsmellor@hotmail.co.uk

T 01852 316297

M 07775741617

Opening Arrangements:

- Friday 21st to Monday 24th August
10am - 5pm
- Saturday 29th August to
Sunday 30th August
10am - 5pm

My studio is open 11am to 4pm on the days that I am open

Address: Barndromin Farm, Knipochn, By Oban, Argyll PA344QS.

Directions: The studio is at Barndromin Farm, six and a half miles south of Oban on the A816. The farm driveway is about 500m south of the Knipochn Hotel and you will see the creamy white farmhouse set back off the road on the hillside overlooking the loch. My studio is in an old kitchen at the farmhouse. Drive up to the main house and it should be obvious!



Opening Arrangements:

- Friday 21st to Monday 24th August
10am - 5pm
- Saturday 29th August to
Sunday 30th August
10am - 5pm

Open by appointment outwith Open studio event.

Address: The Wonky Pot, Victoria Hall, Newtown, Inveraray, Scotland PA32 8AH

Directions: There is a small parking bay to the front of the building; However it is advisable to park in the large avenue (free) car park to the rear of the studio and take the short 1 min walk along to the front.

E amizia100@gmail.com

M 07419330457

I love paint and clay, happiest when deep in the flow of creativity! My studio "The Wonky Pot" sits overlooking Loch Fyne. I take daily wanders along the shore, soaking in this beautiful environment and picking "special" rocks and shells. This landscape fascinates me and I am on a quest to capture in my ceramics and art the rich colours and movement that mother earth holds and gives so easily.

I am currently exploring how "earthy" I can make pots.

Art is an adventure and I'm so grateful to be on this ride.



Painting is something I do when all the important jobs around the farm have been done. Sometimes weeks can go by without even stepping into the studio. There are occasions when I'm on a roll and I can turn out several paintings in a day. These are the moments I like best although I am selective as to what I keep and what I scrub out. If a painting has given me a lot of grief I can get as much pleasure wiping it as I get from the successes.

Our famous cream teas are served in the afternoons during the Artmap dates with all donations again going towards Oban Hospice.

W www.rocagi.co.uk
E rorycg@gmail.com
M 07876781279

Opening Arrangements:

- Friday 21st to Monday 24th August
10am - 5pm
- Saturday 29th August to
Sunday 30th August
10am - 5pm

Open by appointment outwith Open studio event.

Address: Gallery and Artist's Studio,
Glenfearnach, Kilmelford,
Scotland PA34 4XD

Directions: Turn off the main road south of Kilmelford signposted to Degnish and Melfort Village. 2 miles along this single track road turn left at the gates to Melfort Village and follow the road round for a few hundred yards. The gallery is signposted and is the next house on the right.



Opening Arrangements:

- Friday 21st to Monday 24th August
10am - 5pm
- Saturday 29th August to
Sunday 30th August
10am - 5pm

Open by appointment outwith Open studio event.

Address: Kilchattan House, Tobernoch, Isle of Luing, Scotland PA34 4TY.

Directions: My studio is a green container unit with glass doors in my garden. Looking forward to meeting you all.

M 07825915685

I was born in the Highlands of Scotland and for most of my life I grew up on the Isle of Berneray in the Outer Hebrides. From a young age I admired and appreciated the beauty, spirituality and culture of the people, landscape and the nature that encompassed the islands. Growing up on my grandmother's croft gave me a love for her animals and way of life which reflects through my work. A lot of my work is an expression of memories, emotions and experiences. Colour plays a huge part within my work whatever medium I use.



Stunningly located - the views are a picture worth taking!

Various artists will be exhibiting in the hotel and why not visit our garden Labyrinth?

Opening Arrangements:

- Friday 21st to Monday 24th August
10am - 5pm
- Saturday 29th August to
Sunday 30th August
10am - 5pm

Open 9.30am - dusk. Entrance to hotel via main reception doors. Meals, drinks and light refreshments all day.

Address: Arduaine, Argyll,
Oban PA34 4XG.

Directions: A816, 18 miles south of Oban,
18 miles North of Lochgilphead

W www.lochmelfort.co.uk

T 01852 200233



Opening Arrangements:

- Friday 21st to Monday 24th August
10am - 5pm
- Saturday 29th August to
Sunday 30th August
10am - 5pm

Open by appointment outwith Open studio event.

Address: Moine Ruadh, Ardfern,
Lochgilphead, Argyll PA31 8QP.

Directions: This year the Gaia-hut, mobile studio/gallery, is on the move! Please look out for this tiny gallery in and around Ardfern village and in other lay-bys around during the Open Days. If interested in visiting outside those days I will be at the above location.

Kat Robertson describes herself as a Gaia-driven, 'stream of consciousness' artist. She engages with creativity as a connective, spiritual, healing practice.

The creative process and sharing it is an important aspect of her work. Using her blog as a 'virtual gallery', she shares these 'experiments' with a wider, global, audience.

Look out for her in her mobile Gaia hut in Ardfern village this year!

W <https://rollingom.blog/>
E katalyzor@gmail.com
T 01852 500362



The source of my work is landscape in memory. I try to express my personal and emotional response to a particular place and time, using energetic overlayings of colour and blocking out previous shapes and marks as I work. Initially I allow myself to be led by the paint and marks, then later take control of the medium without losing the initial immediacy.

My studio overlooks Loch Awe.

Opening Arrangements:

- Friday 21st to Monday 24th August
10am - 5pm
- Saturday 29th August to
Sunday 30th August
10am - 5pm

Address: Torranbeag, Ford,
Scotland PA31 8RH.

W www.lynnmcgregor.co.uk

E lynnmcgregor@elite.co.uk



Opening Arrangements:

- Friday 21st to Monday 24th August
10am - 5pm
- Saturday 29th August to
Sunday 30th August
10am - 5pm

Open by appointment outwith Open studio event.

Address: The Studio, Kennels Cottage
Lunga, Lochgilphead PA31 8UU.

Directions: Follow signs to Craobh Haven Marina, turn left to Lunga Estate, Kennels cottage is on the left just before the Stables.

W www.wildart.co.uk

E colin@wildart.co.uk

T 01852 500232

Colin's works are admired for their depth, drama and acutely observed detail. In the words of one of his clients, "His insight into nature is amazing". Colin captures the subtle changing light of the landscape, of clouds, mountains and of water. He is also well-known for refining the traditional art of painting with a woodcock's pin-feather.

A professional artist for over 30 years he is always willing to inspire and offer tuition to those wishing to learn or progress.



Lizzie's work involves a deep exploration of the landscape around her, through running and walking in all weathers and on any terrain. Her work focuses on the energy of experience, feelings and memory found in her interactions with land, sea and air. Lizzie is interested in the connection between herself, and others, and the landscape and how this can be deepened through a creative process and whether this can encourage a deeper responsibility towards our damaged but beautiful world. Expect energetic mark making, trees, forests, mountains, island lines and air.

Opening Arrangements:

- Friday 21st to Monday 24th August
10am - 5pm
- Saturday 29th August to
Sunday 30th August
10am - 5pm

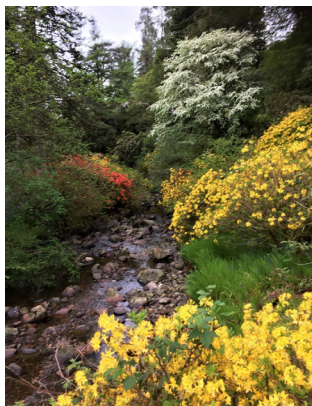
Open by appointment outwith Open studio event.

Address: HAWTHORN, Ardlarach Road, Ardfern, Scotland PA31 8JA.

Directions: In Ardfern, turn right at Craignish Primary School and my studio is at the entrance to the second house on the left.

E Lizzieionarose@yahoo.co.uk

M 07717583965

**Opening Arrangements:**

- Friday 21st to Monday 24th August
10am - 5pm
- Saturday 29th August to
Sunday 30th August
10am - 5pm

Open by appointment outwith Open
studio event.

Address: Crarae Garden,
Inveraray PA32 8YA.

W www.nts.org.uk/visit/places/crarae-garden

E dpatrick@nts.org.uk

T 01546 886614

A peaceful and inspiring place for
artists and art lovers alike.

Enjoy exhibits and workshops from
local artists



Creative inspiration from the landscape is inescapable in Argyll. Everyday is exciting, the bold shapes and colours of the meeting of sea and land, the rocks and plants are a constant resource for interpretation in mixed media, and multicolour printmaking.

Architect turned Wallpaper and Fabric Designer, Artist and Printmaker, she now lives, works and runs inspiring creative residential art holidays in Tarbert. <http://www.whitehouseart.co.uk>

W www.karenbeauchamp.com

E karen.beauchamp@me.com

T 01880 730287

Opening Arrangements:

- Friday 21st to Monday 24th August
10am - 5pm
- Saturday 29th August to
Sunday 30th August
10am - 5pm

Main studio open year round by appointment at Whitehouse Studio, Glenreashdale House, Whitehouse, Tarbert, Argyll PA29 6XR.

Address: Crarae Gardens, A83, Inveraray, Scotland PA32 8YA.

Directions: This year I am exhibiting in the Garden shop at National Trust for Scotland – Crarae Gardens in the cafe shop.

M 07713246633

**Opening Arrangements:**

- Friday 21st to Monday 24th August
10am - 5pm
- Saturday 29th August to
Sunday 30th August
10am - 5pm

Address: Kilmartin Museum, Kilmartin
Lochgilphead PA31 8RQ.

Directions: From Lochgilphead follow
the A816 signposted Oban.
After approximately 8 miles you will enter
the village of Kilmartin and the Museum
car park can be found on the left. From
Oban follow the A816 signposted
Lochgilphead. Kilmartin is approximately
30 miles south of Oban and the Museum
car park is on the right about 1 mile after
entering Kilmartin.

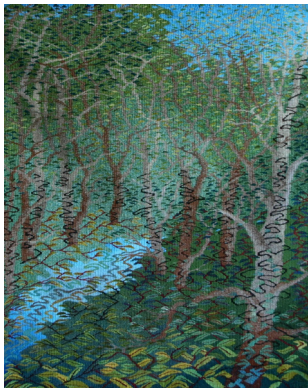
W www.kilmartin.org

T 01546 51027

Kilmartin Museum is a renowned
centre for archaeology and
landscape interpretation.
Our shop offers many goods from
local craftspeople and the walls of
our café are adorned with vibrant
works of art created by local artists,
many inspired by the unique
atmosphere of Kilmartin Glen.

LOUISE OPPENHEIMER

19



The smell, colour and texture of wool delights my senses and the tactile pleasure of weaving to create a solid structure, allows time for contemplation and imagination to thrive.

Design begins with line drawn images using fine pens but when weaving I rely on intuition to lead the way as journeys are so much more than the sum of their parts if their destinations are shrouded in mystery.

W www.louiseoppenheimer.com
E louiseoppenheimer@gmail.com
T 01546 605323

Opening Arrangements:

- Friday 21st to Monday 24th August
10am - 5pm
- Saturday 29th August to
Sunday 30th August
10am - 5pm.

Open all year round by appointment or do feel free to take a chance if passing, to knock on the door where a warm welcome awaits.

Address: East Cottage, Drimvore
Kilmichael Glassary, Lochgilphead,
Argyll PA31 8SU.

Directions: From Lochgilphead on A816, pass Dunadd then turn next left onto Crinan Ferry Road. East Cottage is 3rd on right. Red dots and sign Weaving Studio are clear on driveway. Parking on drive by side of house.



Opening Arrangements:

- Friday 21st to Monday 24th August
10am - 5pm
- Saturday 29th August to
Sunday 30th August
10am - 5pm

Open by appointment outwith Open studio event.

Address: Crinan Hotel,
Crinan, Argyll PA31 8SR.

E rossfloats@yahoo.co.uk
M 07766277818

Ross Ryan studied at Grays School of Art in Aberdeen from 1993 - 1997. From his home in Crinan, Argyll, Ryan has travelled worldwide painting and sketching. He exhibited in May 2018 with a body of work created whilst sailing on the west coast in the winter of 2017, and will have a new exhibition at The Scottish Gallery in May 2020.

Tommy Zyw, The Scottish Gallery,
Edinburgh.



I make images using a basic type of camera - a box with a pinhole in one side. Often my process starts by first making a camera - pinholes can be very simple objects - and then capturing images.

I find that pinhole cameras, for all their simplicity, can create beautifully complex images of light and motion. I aim to capture these moments of complexity and can often be found on (or off) the coast of Argyll with a camera.

W make-do.studio

E nils_aksnes@live.co.uk

M 07835890903

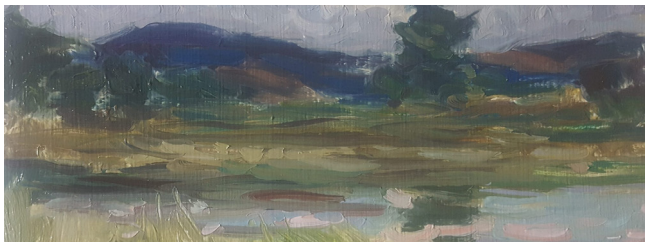
Opening Arrangements:

- Friday 21st to Monday 24th August
10am - 5pm
- Saturday 29th August to
Sunday 30th August
10am - 5pm

Open by appointment outwith Open studio event.

Address: 3 Kennovay, Tayvallich, Argyll, PA31 8PJ.

Directions: Round Tayvallich bay and pass the shop and church on your left. The house is on the right just beyond the church. The studio is around the right-hand side of the house.



Opening Arrangements:

- Friday 21st to Monday 24th August
10am - 5pm
- Saturday 29th August to
Sunday 30th August
10am - 5pm

Open by appointment outwith Open studio event.

Address: Dunbhronaig, Tayvallich,
Lochgilphead, Argyll, PA31 8PN.

Directions: I am 100yds up the Carsaig road out of Tayvallich, second opening on your left, at the brow of the hill. My studio is the garage and you can park there.

W www.carolinehunterart.com
E mail@carolinehunterart.com
T 01546 870235

Caroline grew up in Orkney, studied History of Art at Aberdeen University and began painting in 1994.

Well known for her understated yet powerful seascapes and subtle still-lives, her work has a timeless, contemplative quality. Mussel shells, a porcelain bird, birch-woods, bracken and winter seas at dusk are expressed in the muted, vibrant tones of Argyll's light and landscape. She has been a contributor and prize-winner at the RGI and RSA.



I use screen printing and will demonstrate this technique during Open Studio Weekend. I will also be selling original artwork from my book, *Wild Island*, about the wildlife of the Hebrides. I am a member of the Society of Wildlife Artists and exhibit annually with them in London.

W janesmithwildlifeart.weebly.com
E janesmithwildlifeart@hotmail.com
T 01546 870618
M 07379 015466

Opening Arrangements:

- Friday 21st to Monday 24th August
10am - 5pm
- Saturday 29th August to
Sunday 30th August
10am - 5pm

Year round, visits welcome by appointment, but not at this address, so please phone beforehand.

Address: 7 Kintallen, Tayvallich,
Lochgilthead PA31 8PR.

Directions: I have moved location within Tayvallich. Take the first turning on the right as you enter the village. Access is level. Shop, café and pub nearby.



Opening Arrangements:

- Friday 21st to Monday 24th August
10am - 5pm
- Saturday 29th August to
Sunday 30th August
10am - 5pm

There are no restrictions to visiting this al fresco exhibition.

Address: Scottish Natural Heritage,
1 Kilmory Estate, Lochgilphead,
Argyll PA31 8RR. (NOT the address
of the trail - please use the map)

Directions: Set along the Mill track at
Taynish National Nature Reserve. From
Tayvallich Hall, keep left and follow the
road down to Taynish NNR, park at the
Mill Car Park then follow the signs
along the path to the mill.

W www.nature.scot
E heather.watkin@nature.scot
T 0131 3162658
M 07827990634

Art Trail at the Mill

Plans for the Art Trail at the Mill have been affected by the response to the coronavirus. This is the Year of Coasts and Waters and we plan to have installations displayed along the tranquil oak woodland trail that reflect that theme.

Details of artists and artworks were not finalised at the time this brochure was completed. Please refer to the profile page on the Artmap Argyll website for up to date information about the Art Trail before you visit.



My artistic practice is informed by deep research into place, achieved by living and working in the same environment. Running and maps are the resources and method I practice.

You are welcome to visit my studio/gallery in my garden at Keills with views down the Sound of Jura, a setting described as a combination of wildness and tranquillity.

I am a graduate of Glasgow School of Art BA (Hons) Fine Art.

W www.susannahmacmillanart.com

E susannahmacmillan@btinternet.com

T 01546 870610

M 07876820815

Opening Arrangements:

● Friday 21st to Monday 24th August
10am - 5pm

Open by appointment outwith Open studio event.

Address: Keills Studio and Gallery,
The Old Post Office, Keills, Tayvallich,
Lochgilthead, Argyll PA31 8PQ.

Directions: 5 Miles South of the Village of Tayvallich on the B8025. Combine visiting my Studio/Gallery with Keills Chapel and its carved grave stones and historic pier a mile further on.



Opening Arrangements:

- Friday 21st to Monday 24th August
10am - 5pm
- Saturday 29th August to
Sunday 30th August
10am - 5pm

Open by appointment outwith Open studio event.

Address: Kilmichael, Tayvallich,
Argyll PA31 8PN.

Directions: Rounding Tayvallich bay turn right at Carsaig sign. Follow the road over a small bridge. Kilmichael is the last house on the main road of the small cul-de-sac on your right. Parking in driveway just past tall hedge and church-like sun room.

Argyll - the inspiration. From my first visit, its rugged coastline, islands, empty golden beaches with seapinks clinging to the rocks, its wildlife and dramatic skies have drawn me in. My paintings represent my journeys and adventures around this most beautiful area.

W www.carolineplummer.co.uk

E info@carolineplummer.co.uk

T 01546 870208



Painting and Prints of water and shore, woods and knaps.

From home I follow the tideline, maybe meeting an otter. The oily golden sheen of reflected sky on a wet coat, the breaking sea patterns of mirrored land, might lead to a painting.

Or perhaps a dramatic light on the familiar woods reveals something new.

Visit my studio and gallery to see how it's going.

Opening Arrangements:

- Friday 21st to Monday 24th August
10am - 5pm
- Saturday 29th August to
Sunday 30th August
10am - 5pm

Visitors welcome all year round.

Address: Karswick House, Tayvallich
LOCHGILPHEAD, Argyll PA31 8PN.

Directions: Half way round Tayvallich bay, turn right at Carsaig sign. Just before the sea you will see a white house with red doors on the left. Parking in driveway. Disabled access.

W susanberrysite.com

E otterprints@btinternet.com

T 01546 870217

**Opening Arrangements:**

- Friday 21st to Monday 24th August
10am - 5pm

Address: 1 Ballibeg, Castleton,
Lochgilphead PA318RU.

Directions: From Lochgilphead, take the A83 towards Glasgow. After approx 3 miles turn left at the stone house, opposite the turning to Castleton. Drive up the hill and bear left. My house is the second on the left. Go through the garden gate to my workshop.

W www.melaniechmielewska.co.uk

T 01546 606625

M 07864573682

This year my focus is bringing my passion for wild swimming and my love for the creatures of the ocean together in relief and three dimensional stone carvings. Please come and visit my workshop and try some stone carving for yourself.



Using acrylic paint in this very fluid fashion energises the paints and allows them to move and interact on the surface in unpredictable and surprising ways. This results in many disasters in the beginning, but eventually colourful abstract paintings, often of unexpected beauty can be produced.

Opening Arrangements:

- Friday 21st to Monday 24th August
10am - 5pm
- Saturday 29th August to
Sunday 30th August
10am - 5pm

Open by appointment outwith Open studio event.

Address: 5 Upper Colquhoun Street,
Helensburgh, Argyll and Bute Council,
Scotland G84 9AQ.

W www.lesleycarruthers.co.uk
E lesley@mihc.co.uk
M 07484868845

**Opening Arrangements:**

- Friday 21st to Monday 24th August
10am - 5pm
- Saturday 29th August to
Sunday 30th August
10am - 5pm

You can visit Richard in his gallery and studio from May until late September - 11.00am to 5.00pm. He is open Wednesday to Sunday but will be available for all of the Artmap Weekend.

Address: Bole the Gallery, Fieldhouse Kilberry, Argyll PA29 6YD.

Directions: From Lochgilphead turn south towards Campbeltown (A83) After 4 miles turn right, signposted Kilberry (B8024) From Tarbert travelling in either direction take the turn signposted Kilberry (B8024).

Winner of "Craft & Design" magazine's selected maker of the year; wood and metal category, Richard has been creating Wood Art for several years. Each piece takes several weeks to make due to the intricate detail. Richard has made work that's displayed around the world. A member of the Register of Professional Turners, he is committed to producing some of the finest turned art available in the country today.

W bolegallery.com

T 01880 770202



The Archway Gallery

7 Union Street, Lochgilphead, Argyll

PA31 8JS

Tel: 01546 606894

info@thearchway.co.uk



Art Gallery
 Picture Framers
 Art Supplies
 Gift Shop

Mon to Sat 10am-5pm



Be part of Artmap



Friends of Artmap



Associate Member



Full Member



Artist open studio

Artists grow with Artmap

find out more at

www.artmapargyll.co.uk/join-artmap/

FULL MEMBERS NOT OPEN 2020

Alan Cunningham

Digital, Drawing & Painting, Mixed Media, Wood.

www.traighean.online **W**

traighean@gmail.com **E**



Kirsty Brady

Glass.

www.atouchglass.co.uk **W**

info@atouchglass.co.uk **E**

07748836293 **M** 01546 367984 **T**



Kerrien Grant

Drawing & Painting.

www.coastwoodgallery.co.uk **W**

kerrien@coastwoodgallery.co.uk **E** 07824611869 **M**



David Bracken

Wood.

www.turning.me.uk **W**

01546 510202 **T**



Lottie Goodlet

Mixed Media, Printmaking.

www.soundofjuraseaweeds.com **W**

charlotte.goodlet@btinternet.com **E**

07825323776 **M**

01546 870283 **T**



FULL MEMBERS NOT OPEN 2020



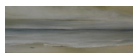
Jane Walker

Drawing & Painting, Mixed Media,
Printmaking, Sculpture.

W jane-walker-studio.com

E janewalker904@gmail.com

T 01546 603037 **M** 07785524521



Victoria Maxwell-MacDonald

Drawing & Painting.

W www.victoriamaxwellmacdonald.co.uk



Ann Thomas

Drawing & Painting.

W www.annthomas-paintings.co.uk

E ann@annthomas-paintings.co.uk

T 01880 820724



Jane Allan

Basket weaving.

W www.seafieldfarmcottages.co.uk

E seafieldfarm3@gmail.com

T 01546 850274



Karen Liversedge

Design, Glass, Sculpture, Textiles.

W www.karenliversedge.com

E karenliversedge@hotmail.co.uk

M 07799350039

FULL MEMBERS NOT OPEN 2020

Lesley Burr

Ceramics & Mosaic, Drawing & Painting, Printmaking.

www.lesleyburr.co.uk **W**
artistlesleyburr@gmail.com **E**
07917567268 **M**
01546 600267 **T**



Libby Anderson

Drawing & Painting, Mixed Media, Printmaking.

libbyandersonartist.com **W**
libbyanderson@mac.com **E**
01546 870660 **T**



Ken Simm

Drawing & Painting, Photography.

www.kenart.co.uk **W**
ksimmart@aol.com **E**
07879208752 **M**



Margaret Ker

Ceramics & Mosaic, Drawing & Painting,
Jewellery, Mixed Media.

www.margaretker.com **W**
kermargaret@aol.com **E**
07889966585 **M** 01546 810375 **T**



Cathleen MacDonald

Textiles.

woollybobbins@gmail.com **E**
07714250220 **M**
01546 603108 **T**



FULL MEMBERS NOT OPEN 2020



Carol Olsen

Drawing & Painting, Jewellery, Mixed Media, Textiles.

W www.carolodesign.com

M 07762205313

T 01866 822580



Conny Graf

Photography, Wood.

W www.thehardwoodproject.com/conny-graf.html#

E connygraf@hotmail.co.uk

M 0747160811



Sian MacQueen RSW

Ceramics & Mosaic, Drawing & Painting,
Mixed Media, Printmaking.

W www.sianmacqueen.com

E sianmacqueen@me.com

M 07801846565 **T** 01546 510307



Lucy Jane Walsh

Jewellery.

W www.lucyjanevalsh.co.uk

E lucy@lucyjanevalsh.co.uk

T 01852 500212



Deborah Gray

Mixed Media, Textiles.

E deborah.gray7@btinternet.com

M 07776092903

FULL MEMBERS NOT OPEN 2020

Scott MacDonald

Drawing & Painting, Photography.

www.scott-macdonald.co.uk **W**

stormmedia@gmail.com **E**

07746698682 **M**



Eno Deka

Mixed Media, Photography, Sculpture.

www.heidroom.com **W**

eno_deka@hotmail.com **E**

01546 510310 **M**



Kate MacDonald

Textiles.

www.needlesmiths.co.uk **W**

needlesmiths@mail.com **E**

07765284129 **M**

01546 830020 **T**



Arthur Ker

Drawing & Painting, Design, Mixed Media.

www.arthurker.com **W**

kerarthur@aol.com **E**

07540300239 **M**

01546 810375 **T**



Alexander Hamilton

Mixed Media, Sculptor.



ASSOCIATE MEMBERS 2020



Sheila Quillin

Sculpture, Wood.

E voirrey@voirrey1.com

T 01852 300337



Erin Barker

Drawing & Painting, Photography.

E www.erinbarkerart.co.uk

W erin@erinbarkerart.co.uk



Mike Masino

Drawing & Painting.

W www.mikemasino.scot

E mike@masino.scot

M 07971 012282

T 01499 500609



Brian Barker

W www.auchgoylebaycottage.scot

E brian@barkernet.co.uk

M 07708461081

T 01546 886273



Andrew McCallum

Jewellery.

W www.andrewmccallumjewellery.com

E andrew@andrewmccallumjewellery.com

M 07981107791 **T** 01866 844355

ASSOCIATE MEMBERS 2020

Keira Anderson

Design, Digital, Drawing & Painting.

akidfromkibble@googlemail.com **E**

07840553846 **M**



Val Hamilton

Design, Mixed Media.

valhamilton5@gmail.com **E**

07711848796 **M**

01631 564517 **T**



Polly Hamilton

Drawing & Painting.



Alison McAlpine

Drawing & Painting.



Elma Nee

Drawing & Painting.



Artmap Argyll is a network and membership organisation open to professional and aspiring artists alike. We help artists network with each other and to share their work and experience with a wider audience.

Our vision is to ensure that Argyll is recognised as a vibrant, creative hub. We deliver a range of events, public art installations and workshops that offer artists opportunities to collaborate on art projects, share ideas and exchange information.

Our annual Red Dot Studio Trail is Argyll's premier visual arts event and it is evident that sales and revenues provide a boost to the local economy.

As a social enterprise company, all our funds are used for activities that benefit Argyll's artists and communities. We are looking for new artists to join us so we can help them share their work through studio visits and sales.

Full and Associate Member fees are £30 per year. Young Associate Members and Friends pay £15 per year. Full Members taking part in the Open Studios event pay an additional fee.

If you're interested in joining Artmap Argyll, please go to artmapargyll.co.uk/join-artmap/ or e-mail us at members@artmapargyll.co.uk

THANK YOU

We are indebted to and extremely grateful for the continued support from: AITC, Creative Scotland, Heart of Argyll, Kilmartin Museum, Scottish Canals, Scottish Natural Heritage, talc, Ventient Energy A'Chruach Community Fund, CHArts and each of the advertisers and venues who provide invaluable support without which Artmap Argyll would not be able to thrive.

We are also thankful to our volunteers, partners, spouses and families for their support throughout the year.

Disclaimer: Please use the map and directions in conjunction with your own road maps. Artmap Argyll accepts no liability for any loss, damage or injury sustained by any member of the public visiting any venue participating in the open studio event listed in this brochure. Visiting adults are responsible for the supervision of any children in their care. It is not permissible to take pets of any sort into the venue area. It is the venue's responsibility to have liability cover. Whilst every effort is made by artists to ensure that the venues are as safe as possible, visitors should be aware that the studios are working environments and can be dangerous places. Great care must be exercised when visiting as there may be hazardous substances and/or tools and powerful machinery. Please treat all venues with respect and remember that many of the artists work from home.

Contact: admin@artmapargyll.co.uk

Follow us on Instagram & Facebook:

[instagram.com/artmapargyll](https://www.instagram.com/artmapargyll) • [facebook.com/artmap](https://www.facebook.com/artmap)

Open Studios 2020

August 21st -24th
and 29th - 30th

*The annual Artmap Argyll
Red Dot Open Studios event is
in its 13th year and has grown
from the original 20 studios to the broad
mix of artists you see today. The growth
in popularity of the event means that
studios will be open over two weekends -
August 21st - 24th and some of the
studios will be open into the
following Bank holiday weekend of
29th - 30th August.
Also, look out for special events and
exhibitions throughout the year.*

Visit us at artmapargyll.co.uk