



Artmap Argyll

STUDIO DIRECTORY 2019

● or ●● red dots after the Full members' names indicate the number of weekends the studios are open during the Open Studios 2019.

Artists & Venues

- | | |
|--------------------------|---------------------------------|
| 01 Caroline Cooke ●● | 23 Kate MacDonald ●● |
| 02 Ewen Munro ●● | 24 Lottie Goodlet ●● |
| 03 Lucy Gray ●● | 25 Libby Anderson ● |
| 04 Carol Olsen ● | 26 Caroline Hunter ●● |
| 05 Fiona Macrae ●● | 27 Jane Smith ●● |
| 06 Rockfield Centre ●● | 28 SNH Art Trail at the Mill ●● |
| 07 Morag Mellor ●● | 29 Caroline Plummer ●● |
| 08 Rory Gibson ●● | 30 Susan Berry ●● |
| 09 Loch Melford Hotel ●● | 31 Nils Aksnes ●● |
| 10 Kat Robertson ●● | 32 Susannah MacMillan ●● |
| 11 Colin Woolf ●● | 33 Cathleen MacDonald ●● |
| 12 Ken Simm ● | 34 Lesley Burr ● |
| 13 Arthur Ker ●● | 35 Argyll College UHI ● |
| 14 Margaret Ker ●● | 36 Jane Walker ● |
| 15 David Bracken ● | 37 Dochas Gallery ● |
| 16 Kilmartin Museum ●● | 38 Love Dove Studio ●● |
| 17 Eno Deko ● | 39 Melanie Chmielewska ● |
| 18 Sian MacQueen RSW ●● | 40 Laura Clark ●● |
| 19 Louise Oppenheimer ●● | 41 The Steamer Terminal ●● |
| 20 Kirsty Brady ● | 42 Richard Kennedy ●● |
| 21 Karen Beauchamp ● | 43 Kate Bauen-Hughes ●● |
| 22 Ross Ryan ● | |

Please note: Many artists do not have card facilities should you wish to make a purchase. Some have online payment options while some can only receive cheques or cash.

Open Studios 2019

Friday 23rd to Monday 26th August.

Saturday 31st August & Sunday 1st September.

10am - 5pm

We are pleased to invite you to our twelfth annual Red Dot Studio Trail. This is one of Argyll's premier visual arts events that allows members to showcase their work and provides a substantial boost to the local economy. Many studios are open for both weekends of the event following the success of last year's trial to add a second weekend. All the studios will be open on the August Bank Holiday weekend, but please check if a studio is open on the second weekend before you decide to visit.

The red dot trail guides visitors to artists' studios by a network of numbered red dots and direction arrows. A warm welcome is extended to art lovers at studios and venues from Glencoe in the north to Kilberry in the south and for the first time this year we have a studio on Tiree!

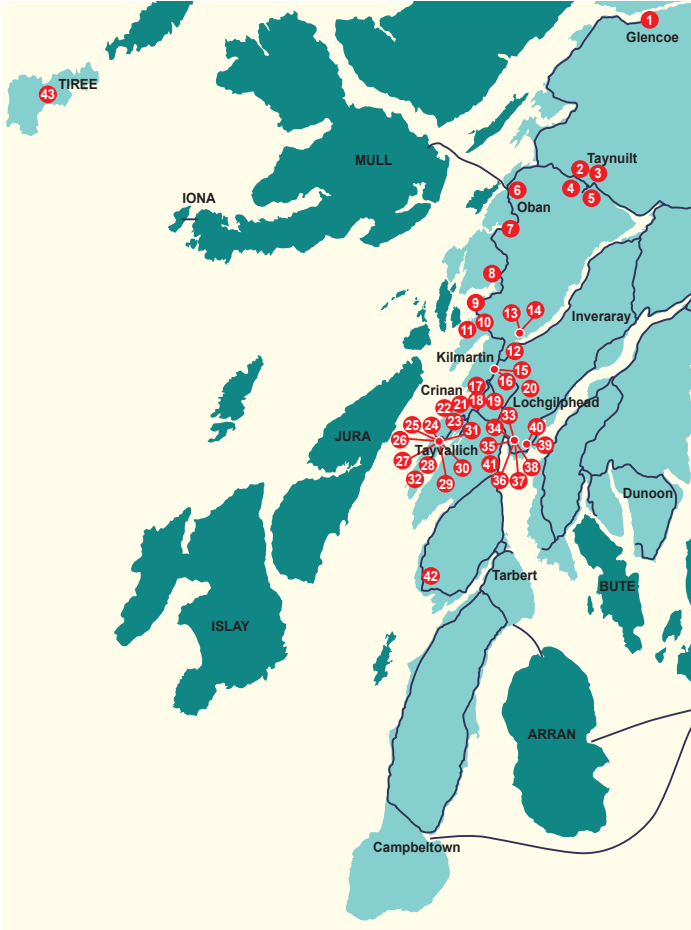
The six day event over two weekends is an opportunity to visit artists in their studios, to see how they work, without the pressure to buy – although if you do fall in love with a piece, you have the joy of meeting the artist and seeing how the work is made. In many studios there are opportunities to try out the technique or craft the artist employs and to browse their sketchbooks to see how they develop their ideas.

We hope you enjoy Argyll's cultural diversity and to say thank you for visiting the Open Studio event we are offering a prize draw of £200 to spend in the studio of your choice. To enter just pick up a red dot sticker available in every studio and collect 8 or more for your chance to win.

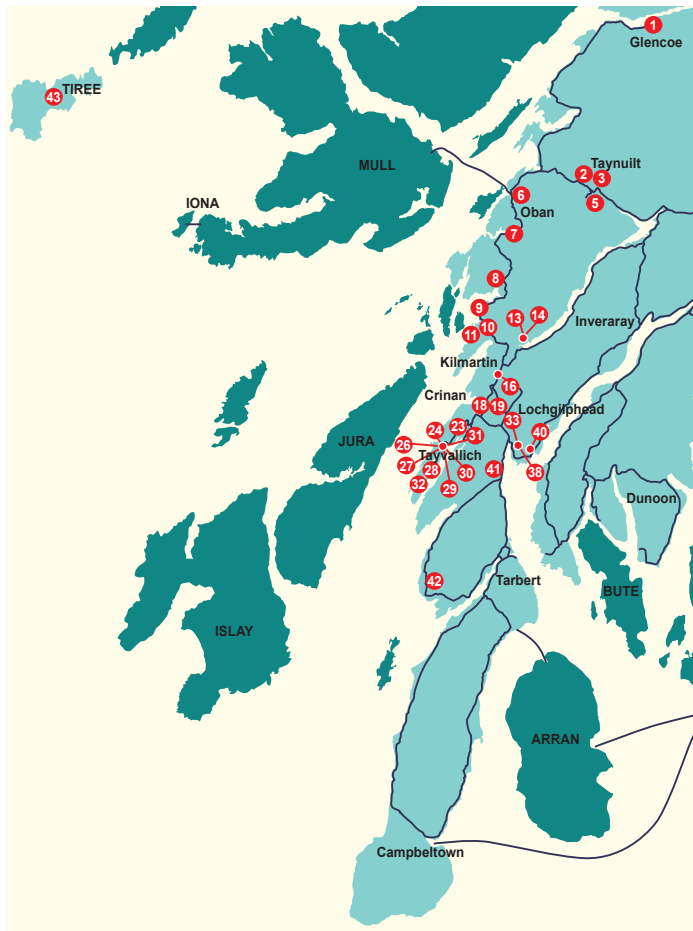
Some Artmap members and invited artists are also showcasing work over the summer at Taynish NNR as part of the SNH Taynish Art Trail. Their work is based on the theme of Transformation.

Please keep this brochure for further reference because most of the studios can be visited all year round by appointment.

Studios open Friday 23rd to Monday 26th August.



Studios open Saturday 31st August & Sunday 1st September.





From my small and informal studio in Glencoe, I produce pastel drawings and studio glass of Scottish land and seascapes. Using the texture and colour of pastel, I aim to capture the dramatic contrasts of light and dark in the land, sea and sky.

Like pastel, glass is also a tactile and vibrant medium. This year I have been exploring new techniques and developing my range of kilnformed glass. Commissions undertaken.

W www.glencoestudiogallery.co.uk

E caroline@glencoescotland.com

M 07900933752

Opening Arrangements:

● Friday 23rd to Monday 26th August
10am - 5pm

● Saturday 31st August to
Sunday 1st September
10am - 5pm

Open yearly Monday to Friday 11am to 4pm. Viewings outwith these times are welcome and can be arranged by phoning ahead.

Address: Glencoe Studio Gallery,
Tigh Phuirt, Glencoe, Argyll PH49 4HN.

Directions: You can find us just off the A82 near Glencoe crossroads.



Opening Arrangements:

- Friday 23rd to Monday 26th August
10am - 5pm
- Saturday 31st August to
Sunday 1st September
10am - 5pm

Address: c/o Airds Bay House,
Taynuilt, Argyll PA35 1JR.

Directions: From Oban, Take the A85 north, continuing through Connel towards Taynuilt. Almost immediately as you enter the 30mph zone for Taynuilt, turn left (sign post, Airds Bay). Continue down this single track road then taking the first left (stone gate posts, open gate). You will come to a fork in the lane where you will see the Airds Bay House. Please keep left.

Ewen's passion for photography began whilst studying woven textile design in the early 80s. His enthusiasm for creating images has developed from a close interest in the unique characteristics of light and hue particularly found in Argyll and around the islands of the Hebrides. Add to these rich textures & patterns alongside colours of rust and decay and you discover wonderful photographic imagery that recent adventures have led Ewen to create.

W www.ewenmunrophotography.com
E info@ewenmunrophotography.com
T 01631 569632
M 07795604455



Lucy Gray completed a Fine Art Sculpture Degree at Central School of Art where she achieved a 1st class Honours Degree. Following a printmaking Diploma she began her training in the restoration of lacquered and gilded surfaces. The influences of her continued work in this field can frequently be found in her sculpture.

"In my work I translate an idea through natural forms, capturing the tipping point, the metamorphosis"

Opening Arrangements:

- Friday 23rd to Monday 26th August
10am - 5pm
- Saturday 31st August to
Sunday 1st September
10am - 5pm

Address: Airds Bay House,
Taynuilt, Argyll PA35 1JR.

Directions: From Oban, take the A85 towards Connel. Continue through Connel. Just as you enter the 30mph zone for Taynuilt, turn left (sign post, Airds Bay). Take the first left, (stone gate posts, open gate) when you come to the fork, where you will be able to see the house, keep left.

W lucygraysculpture.com

E graylucy@live.co.uk

T 01866 822286

M 07934421784



Opening Arrangements:

● Friday 23rd to Monday 26th August
10am - 5pm

Address: Ardchuan, Glen Lonan,
Taynuilt, Argyll PA35 1HY.

Directions: From the A85 take the Glen
Lonan road from the village of Taynuilt in a
southerly direction for 0.8 of a mile. I am on
the right, before Airdeny Chalets.
The Sat Nav is accurate for this address.

W www.carolodesign.com

T 01866 822580

M 07762205313

This year I am developing the gutta
and wax effects of painting on silk.
New methods of surface design are
being experimented with.
The production of silk scarves and
paintings being the focus.

Jewellery – Is taking a
metamorphosis and changing the
style of the finished product.
A more organic and less controlled
image is emerging. New lines are
under development.

Trained at Sir John Cass School
of Art, London



Fiona's paintings are becoming less about fish, lemons and pots and more to do with colour, form and space, with an apparent simplicity of construction. Although they are still life paintings their roots are in the natural environment. Spring greens, summer blues, autumn hues and winter days. This year I hope to exhibit some construction paintings made from a lifetime of beach combing finds throughout the Hebrides and beyond.

Opening Arrangements:

- Friday 23rd to Monday 26th August
10am - 5pm
- Saturday 31st August to
Sunday 1st September
10am - 5pm

Open by appointment outwith Open studio event.

Address: Achnahannait, Glen Lonan, Taynuilt, Argyll PA35 1HY.

Directions: Turn off beside the Taynuilt Hotel to Glen Lonan. Aprox 1 Mile up glen road.

W www.fionamacrae.com

M 07743378671



Opening Arrangements:

- Friday 23rd to Monday 26th August
10am - 5pm
- Saturday 31st August to
Sunday 1st September
10am - 5pm

Address: Oban Communities Trust,
Linnthu House, 19 Stevenson Street,
Oban PA34 5NA.

Directions: The Rockfield Centre is located on the corner of Stevenson Street and Hill Street, Oban. Stevenson Street runs off the A85 (George Street).

W www.therockfieldcentre.org.uk

E arts@therockfieldcentre.org.uk

The Rockfield Centre is a new, community-run, creative space in the heart of Oban. During Artmap we will be hosting two shared studio exhibitions.

The first, BLUR, is a collection of new work by Under the Skin Camera Club featuring contemporary photography from the local area.

The second, Of The Land, features three local artists working with wool, felt and wood and includes live demonstrations.

All very welcome.



I paint under my nickname, 'Mogs'. I have always had a passion for art. I read History of Art at Edinburgh University and graduated with an MA in 1980. Recently I have tried to make more time for painting. I enjoy experimenting with styles and mediums. I get inspired by something I see and then try and paint it. I love trying to capture the light on the hills and on the sea.

E mogsmellor@hotmail.co.uk
T 01852 316297
M 07775741617

Opening Arrangements:

- Friday 23rd to Monday 26th August
10am - 5pm
- Saturday 31st August to
Sunday 1st September
10am - 5pm

Address: Barndromin Farm, Knipoch,
By Oban, Argyll PA344QS.

Directions: The studio is at Barndromin Farm, six and a half miles south of Oban on the A816. The farm driveway is about 500m south of the Knipoch Hotel and you will see the creamy white farmhouse set back off the road on the hillside overlooking the loch. My studio is in an old kitchen at the farmhouse. Drive up to the main house and it should be obvious!



Opening Arrangements:

- Friday 23rd to Monday 26th August
10am - 5pm
- Saturday 31st August to
Sunday 1st September
10am - 5pm

Afternoon cream teas served during
Artmap open days.

Address: Blue Rafters Gallery and
Artist's Studio, Glenfearnach, Melfort,
Kilmelford.

W www.rocagi.co.uk
E rorycg@gmail.com
M 07876781279

I've been painting for a little over 10 years now and more or less full time for the last 3 years. Happy to paint commissions and always enjoy a challenge. If you're interested to see what I've been commissioned to paint over the last few years please visit my website.

I can usually be found painting in my studio at Melfort and always welcome visitors to have a look around if I am at home. Open other times by appointment.



Stunningly located - the views are a picture worth taking!
Various artists will be exhibiting in the hotel and why not visit our garden Labyrinth?

Opening Arrangements:

- Friday 23rd to Monday 26th August
10am - 5pm
- Saturday 31st August to
Sunday 1st September
10am - 5pm

Open 9.30am - dusk. Entrance to hotel via main reception doors. Meals, drinks and light refreshments all day.

Address: Arduaine, Argyll,
Oban PA34 4XG.

Directions: A816, 18 miles south of Oban,
18 miles North of Lochgilphead

W www.lochmelfort.co.uk

T 01852 200233



Opening Arrangements:

- Friday 23rd to Monday 26th August
10am - 5pm
- Saturday 31st August to
Sunday 1st September
10am - 5pm

Address: Moine Ruadh, Ardfern,
Lochgilhead, Argyll PA31 8QP.

Directions: Take entrance off the A816 to
Craobh Haven. Third track entrance on the
left which will be sign posted when gallery
is open!

W <https://rollingom.blog/>

E katalyzor@gmail.com

Kat Robertson describes herself as a Gaia-driven, 'stream of consciousness' artist. The creative process and sharing it is an important aspect of her work. Using her blog as a 'virtual gallery', she shares these 'experiments' with a wider, global, audience.

In 2019 she is opening her trailer gallery and tent venue to the public and is looking forward to sharing this playful curiosity, in 'all things Gaia' with visitors! All welcome.



Colin's works are admired for their depth, drama and acutely observed detail. In the words of one of his clients, "His insight into nature is amazing". Colin captures the subtle changing light of the landscape, of clouds, mountains and of water. His work is also available as Pure Silk scarves and Greetings cards. He has also learned and refined the traditional art of painting with a woodcock's pin-feather.

Opening Arrangements:

- Friday 23rd to Monday 26th August
10am - 5pm
- Saturday 31st August to
Sunday 1st September
10am - 5pm

Address: The Studio, Kennels Cottage
Lunga, Lochgilphead PA31 8UU.

Directions: Follow signs to Craobh Haven
Marina, turn left to Lunga Estate,
Kennels cottage is on the left just before
the Stables.

W www.wildart.co.uk

T 01852 500232



Opening Arrangements:

- Friday 23rd to Monday 26th August
10am - 5pm

Address: Cromach, Ford, Lochgilphead,
Argyll PA31 8RH.

Directions: Coming from Kilmartin towards Oban take the turning signposted Ford onto the B840. Follow this road for about 2 miles into Ford. Entering the village, Cromach is 100yds from the Ford sign. It is the second house on the right as you enter the village. The studio is behind the house. Follow the path past the house on the right down the slope to the studio at the bottom of the garden overlooking the Cats Paw Loch.

W www.kenart.co.uk

E ksimmart@aol.com

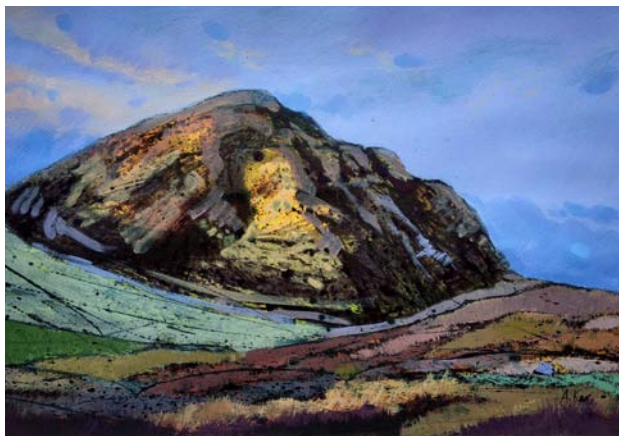
M 07879208752

Ken is a painter, in both watercolour and acrylic and a photographer producing detailed and evocative images from the secret places of the land.

Landscapes from very different viewpoints. Places of moving water, earth, stone and sky.

Ken has been working professionally in the arts and education for over 40 years. He has qualifications in Fine Art and Arts Education.

He hopes to welcome you to his studio and that you enjoy his studies of the times and moods of these enigmatic environments.



Working in a range of media, I try to capture the distinctive character of the West Coast landscape as well as the colours and moods of the changing seasons. This year along with my landscape and forest paintings I will also be showing work developed from sketches made on a recent extended stay on the island of Hoy in Orkney.

W www.arthurker.com

T 01546 810375

M 07540300239

Opening Arrangements:

- Friday 23rd to Monday 26th August
10am - 5pm
- Saturday 31st August to
Sunday 1st September
10am - 5pm

All year by appointment.

Address: Caorann, Ford,
Argyll & Bute PA31 8RH.

Directions: Follow A816 through Kilmartin towards Oban for 1 mile. Turn right on to B840 to Ford. After Ford continue towards Dalavich for 1 mile. Caorann is on the left overlooking Torran Bay on Loch Awe. I'm in the garage studio.



Opening Arrangements:

- Friday 23rd to Monday 26th August
10am - 5pm
- Saturday 31st August to
Sunday 1st September
10am - 5pm

All year by appointment.

Address: Caorann, Ford,
Argyll & Bute PA31 8RH.

Directions: Follow A816 through Kilmartin towards Oban for 1 mile. Turn right on to B840 to Ford. After Ford continue towards Dalavich for 1 mile. Caorann is on the left overlooking Torran Bay on Loch Awe.

W www.margaretker.com

E kermargaret@aol.com

T 01546 810375

M 07889966585

The landscape, the geology and the pre-history of Argyll are the inspiration for my work. Fascinated by the beauty of the dark skies I often incorporate images of constellations in my mosaics and silver jewellery. I employ an experimental approach to expressing my ideas and I enjoy using a broad range of media. I regularly work to commission.



David uses the natural form of wood in everyday objects, using native woods that are mainly windfall or removed due to disease or for safety reasons.

He takes on commissions and develops bespoke works as well as progressing his own ideas. He also teaches woodturning.

His work bridges a craft to an artform by using the natural beauty of wood which is enhanced by colour, texture, and/or piercing.

Opening Arrangements:

● Friday 23rd to Monday 26th August
10am - 5pm

Address: The Old Manse,
Kilmartin PA31 8RQ.

Directions: Entering Kilmartin from the North, The Old Manse is the fifth building on the left. Entering Kilmartin from the South drive passed the museum and down the hill. The Old Manse is 100 metres passed the Kilmartin Garage and on the right.

W www.turning.me.uk

T 01546 510202

**Opening Arrangements:**

- Friday 23rd to Monday 26th August
10am - 5pm
- Saturday 31st August to
Sunday 1st September
10am - 5pm

Address: Kilmartin Museum, Kilmartin
Lochgilphead PA31 8RQ.

Directions: From Lochgilphead follow the A816 signposted Oban. After approximately 8 miles you will enter the village of Kilmartin and the Museum car park can be found on the left. From Oban follow the A816 signposted Lochgilphead. Kilmartin is approximately 30 miles south of Oban and the Museum car park is on the right about 1 mile after entering Kilmartin.

Kilmartin Museum is a renowned centre for archaeology and landscape interpretation. Our shop offers many goods from local craftspeople and the walls of our café are adorned with vibrant works of art created by local artists, many inspired by the unique atmosphere of Kilmartin Glen.

W www.kilmartin.org

T 01546 51027



spunout like a zeppelin
turning in to sky
out of sight
going to high
searing my eyelids
tracing thoughts
in this hypnogogic hell
a vanishing point

W www.heidroom.com
E eno_deka@hotmail.com
T 01546 510310

Opening Arrangements:

● Friday 23rd to Monday 26th August
10am - 5pm

Address: Smiddy House,
Slockavullin, Kilmartin PA31 8QG.

Directions: Slockavullin is a mile south of Kilmartin village and is tucked in behind Temple Wood Standing Stones - Turn off the A816 at Baluachaig, take the 1st right at the bridge. Follow the road until you see the sign for Slockavullin continue through the village turning left onto the gravel drive before the Village green and the bridge over the burn. Follow the drive to the very top.



Opening Arrangements:

- Friday 23rd to Monday 26th August
10am - 5pm
- Saturday 31st August to
Sunday 1st September
10am - 5pm

Year round by appointment.

Address: Mill Cottage, Slockavullin,
Kilmartin PA31 8QG.

Directions: Slockavullin is a mile south of
Kilmartin village and is tucked in behind
Temple Wood Standing Stones - my year
round studio at Mill Cottage is first on the
left as you enter the village.

Ceramic sculptures and paintings
made from modular block pieces
which, when combined, appear
caught between states of physical
change. The works become tactile
systems, seemingly capable of both
shifting and becalming.

W www.sianmacqueen.com

E sianmacqueen@me.com

T 01546 510307

M 07801846565



Time is immaterial when my hands are busy weaving and my head is free to roam.

Travelling in frictionless wonder, sending messages down through my fingers to develop designs on the warp, that evolve slowly, sometimes with surprising results, makes for a satisfying journey to a new destination.

Quiet contemplation en route helps an instinctive choice of colour and form to produce hangings and framed pieces.

W www.louiseoppenheimer.com

E louiseoppenheimer@gmail.com

T 01546 605323

Opening Arrangements:

- Friday 23rd to Monday 26th August
10am - 5pm
- Saturday 31st August to
Sunday 1st September
10am - 5pm.

Open all year round by appointment or do feel free to take a chance if passing, to knock on the door where a warm welcome awaits.

Address: East Cottage, Drimvore
Kilmichael Glassary, Lochgilphead,
Argyll PA31 8SU.

Directions: From Lochgilphead on A816, pass Dunadd then turn next left onto Crinan Ferry Road. East Cottage is 3rd on right. Red dots and sign Weaving Studio are clear on driveway. Parking on drive by side of house.

**Opening Arrangements:**

- Friday 23rd to Monday 26th August
10am - 5pm

By appointment outwith the
Open Studio Weekend.

Address: 1 Fernoch, Ford,
Kilmichael Glassary, Argyll PA31 8RL.

Directions: From the A816 turn into
Bridgend, follow the road around until you
see a sign for Kilmichael Glen, turn up
there, drive past the Church and School
and continue on the road for 3 miles. I am
the first blue/green wooden house on the
right - if you get to a Loch you have gone a
wee bit too far.

Artmap Argyll Open Studio offers a
great chance to catch up with us or
maybe meet us for the first time. Our
creative space has a warm welcome
and new work will be on show.

I specialise in glass art and having
worked in my field for over 15 years
now, I still continue to expand,
develop, learn and love what I do.

W www.atouchglass.co.uk

E info@atouchglass.co.uk

T 01546 367984

M 07748836293



Creative inspiration from the landscape is inescapable in Argyll. Everyday is exciting, the bold shapes and colours of the meeting of sea and land, the rocks and plants are a constant resource for interpretation in mixed media, and multicolour printmaking.

Architect turned Wallpaper and Fabric Designer, Artist and Printmaker, she now lives, works and runs inspiring creative residential art holidays in Tarbert. <http://www.whitehouseart.co.uk>

W www.karenbeauchamp.com

E karen.beauchamp@me.com

T 01880 730287

Opening Arrangements:

● Friday 23rd to Monday 26th August
10am - 5pm

Main studio open year round by appointment at Whitehouse Studio, Glenreasdale House, Whitehouse, Tarbert, Argyll PA29 6XR.

Address: Braeface House, Bellanoch, by Lochgilphead, Argyll PA31 8SN.

Directions: Follow the A83 north from Lochgilphead and turn left at Cairnbaan to follow the Crinan Canal towards Crinan. Do not turn left to Tayvallich but continue along the canal to the Bellanoch yacht basin, the exhibition is in the first building on the left.

M 07713246633

**Opening Arrangements:**

- Friday 23rd to Monday 26th August
10am - 5pm

Address: Crinan Hotel,
Crinan, Argyll PA31 8SR.

E rossfloats@yahoo.co.uk

Ross Ryan studied at Grays School of Art in Aberdeen from 1993 - 1997. From his home in Crinan, Argyll, Ryan has travelled worldwide painting and sketching. He exhibited in May 2018 with a body of work created whilst sailing on the west coast in the winter of 2017, and will have a new exhibition at The Scottish Gallery in May 2020.

Tommy Zyw, The Scottish Gallery,
Edinburgh.



Landscapes, Lampshades
& Lessons.

Living on the west coast of
Scotland Kate's hand-painted textile
lampshades & landscapes echo
her environment.

Gathering inspiration from Argyll's
land & seascape, photographs and
her imagination, subtly painted sea
scenes with stitch overlay are one
of her favourite subjects.

Kate also teaches sewing & creative
textile skills to children & adults.

W www.needlesmiths.co.uk

E needlesmiths@mail.com

T 01546 830020

M 07765284129

Opening Arrangements:

- Friday 23rd to Monday 26th August
10am - 5pm
- Saturday 31st August to
Sunday 1st September
10am - 5pm.

Address: Studio Barn Argyll,
Leac na Ban, Tayvallich PA31 8PF.

Directions: Take the road to Tayvallich,
the right-hand fork at the Achnamara/
Tayvallich junction. In approximately three
quarters of a mile look out for the big red
signs & bunting! Turn right and drive up the
hill (it is a bumpy track but worth the trip)
not only is there a splendid view of artwork,
the view of the landscape is pretty
spectacular too.



Opening Arrangements:

- Friday 23rd to Monday 26th August
10am - 5pm
- Saturday 31st August to
Sunday 1st September
10am - 5pm.

Open 11am - 5pm, Wednesdays &
Sundays, 30th June until 15th September.

Address: Sandwood, Tayvallich,
Lochgilphead PA31 8PN.

Directions: Turn right in Tayvallich centre
towards Carsaig. Please park at Carsaig
Green, as parking is limited beyond this
point. Facing the sea, turn right and walk
about 200 metres along the road, take the
right fork up the hill. Walk up to Sandwood,
a white house with a large wooden balcony.
It's about 300 metres from Carsaig Green.
A flight of steps limits disabled access.

As a year-round snorkeller and
swimmer in the beautiful Sound
of Jura I am fascinated by the realm
of seaweed beneath me. I see it
as secret and unexpected
treasure - underwater kelp forests
and ocean meadows gracefully riding
the ebb and flow of the tides.
Diving for eye-catching specimens,
I then collage, arrange and press
them into artwork to capture their
exquisite colour and diverse and
extraordinary forms.

W www.soundofjuraseaweeds.com
E charlotte.goodlet@btinternet.com
T 01546 870283
M 07825323776



Late in the summer the strange
horses came ...
Like a wild wave charging ...
from The Horses by Edwin Muir.

Opening Arrangements:

● Friday 23rd to Monday 26th August
10am - 5pm

Visitors welcome after hours or anytime.
Please phone to make sure I am here.

Address: Carnan, Tayvallich
Lochgilthead, Argyll PA31 8PN.

Directions: Turn right in the middle of
Tayvallich towards Carsaig. Go over the
little hill, then take 3rd right, on to the
house in the corner with the steeply
pitched roof.

W libbyandersonartist.com
E libbyanderson@mac.com
T 01546 870660

**Opening Arrangements:**

- Friday 23rd to Monday 26th August
10am - 5pm
- Saturday 31st August to
Sunday 1st September
10am - 5pm.

I'm also happy to see visitors during the week (27th - 30th Aug) by appointment.

Address: Dunbhronaig, Tayvallich,
Lochgilthead, Argyll, PA31 8PN.

Directions: I am 100yds up the Carsaig road out of Tayvallich, second opening on your left, at the brow of the hill. My studio is the garage and you can park there.

W www.carolinehunterart.com

E mail@carolinehunterart.com

T 01546 870235

Caroline grew up in Orkney, studied History of Art at Aberdeen University and began painting in 1994.

Well known for her understated yet powerful seascapes and subtle still-lives, her work has a timeless, contemplative quality. Mussel shells, a porcelain bird, birch-woods, bracken and winter seas at dusk are expressed in the muted, vibrant tones of Argyll's light and landscape. She has been a contributor and prize-winner at the RGI and RSA.



I use screen printing and will demonstrate this technique during Open Studio Weekend. I will also be selling original artwork from my book, *Wild Island*, about the wildlife of the Hebrides. I am a member of the Society of Wildlife Artists and exhibit annually with them in London.

Opening Arrangements:

- Friday 23rd to Monday 26th August
10am - 5pm
- Saturday 31st August to
Sunday 1st September
10am - 5pm.

Year round, visits welcome by appointment, but not at this address, so please phone beforehand.

Address: 7 Kintallen, Tayvallich,
Lochgilphead PA31 8PR.

Directions: I have moved location within Tayvallich. Take the first turning on the right as you enter the village. Access is level. Shop, café and pub nearby.

W janesmithwildlifeart.blogspot.com
E janesmithwildlifeart@hotmail.com
T 01546 870618
M 07769783205



Opening Arrangements:

- Friday 23rd to Monday 26th August
10am - 5pm
- Saturday 31st August to
Sunday 1st September
10am - 5pm.

There are no restrictions to visiting this al fresco exhibition.

Address: Scottish Natural Heritage,
1 Kilmory Estate, Lochgilphead,
Argyll PA31 8RR. (NOT the address
of the trail - please use the map)

Directions: Set along the Mill track at
Taynish National Nature Reserve. From
Tayvallich Hall, keep left and follow the
road down to Taynish NNR, park at the
Mill Car Park then follow the signs
along the path to the mill.

T 01546 603611

M 07827990634

Art Trail at the Mill

Taynish National Nature Reserve
is delighted to be hosting an art
exhibition for 2019. The trail will open
on the 17th May and run until 30th
September. This year the exhibition
theme will be 'Transformations'.
Come and see what wondrous
installations the artists will create
on our beautiful Oak woodland trail.



Scottish Natural Heritage
Dualchas Nàdair na h-Alba
All of nature for all of Scotland
Nàdair air fad airson Alba air fad



Argyll - the inspiration. From my first visit, its rugged coastline, islands, empty golden beaches with seapinks clinging to the rocks, its wildlife and dramatic skies have drawn me in. My paintings represent my journeys and adventures around this most beautiful area.

W www.carolineplummer.co.uk

E info@carolineplummer.co.uk

T 01546 870208

Opening Arrangements:

- Friday 23rd to Monday 26th August
10am - 5pm
- Saturday 31st August to
Sunday 1st September
10am - 5pm.

Outwith Open Studio Event; year round by appointment.

Address: Kilmichael, Tayvallich, Argyll PA31 8PN.

Directions: Rounding Tayvallich bay turn right at Carsaig sign. Follow the road over a small bridge. Kilmichael is the last house on the main road of the small cul-de-sac on your right. Parking in driveway just past tall hedge and church-like sunroom.



Opening Arrangements:

- Friday 23rd to Monday 26th August
10am - 5pm
- Saturday 31st August to
Sunday 1st September
10am - 5pm.

Visitors welcome all year round.

Address: Karswick House, Tayvallich
LOCHGILPHEAD, Argyll PA31 8PN.

Directions: Half way round Tayvallich bay,
turn right at Carsaig sign. Just before the
sea you will see a white house with red
doors on the left. Parking in driveway.
Disabled access.

W susanberrysite.com

E otterprints@btinternet.com

T 01546 870217

Working in watercolour I am drawn to the shore. From home I follow otters along sheltered sea lochs, scramble over rocky tidelines and trail deer through the stillness of the wood. Days later, the oily silver colour of reflected sky on a wet coat, the breaking sea patterns of mirrored land, might have led to a painting, or not.

Visit my studio and gallery to see how it's going.



I make images using a basic type of camera - a box with a pinhole in one side. Often my process starts by first making a camera - pinholes can be very simple objects - and then capturing images.

I find that pinhole cameras, for all their simplicity, can create beautifully complex images of light and motion. I aim to capture these moments of complexity and can often be found on (or off) the coast of Argyll with a camera.

Opening Arrangements:

- Friday 23rd to Monday 26th August
10am - 5pm
- Saturday 31st August to
Sunday 1st September
10am - 5pm.

Address: 3 Kennovay, Tayvallich,
Argyll, PA31 8PJ.

Directions: Round Tayvallich bay and pass the shop and church on your left. The house is on the right just beyond the church. The studio is around the right-hand side of the house.

E nils_aksnes@live.co.uk
M 07835890903



Opening Arrangements:

- Friday 23rd to Monday 26th August
10am - 5pm
- Saturday 31st August to
Sunday 1st September
10am - 5pm.

Keills Studio/Gallery is open by
appointment year round.
Please phone or email

Address: Keills Studio and Gallery,
The Old Post Office, Keills, Tayvallich,
Lochgilphead, Argyll PA31 8PQ.

Directions: 5 Miles South of the Village of
Tayvallich on the B8025. Combine visiting
my Studio/Gallery with Keills Chapel and
its carved grave stones and historic pier a
mile further on.

My artistic practice is informed by
deep research into place achieved
by living and working in the same
environment. Running and maps are
the resources and method I practice.
You are welcome to visit my studio/
gallery in my garden at Keills with
views down the Sound of Jura, a
setting described as a combination
of wildness and tranquility.
I am a graduate of Glasgow School
of Art BA (Hons) Fine Art.

W www.susannahmacmillanart.com
E susannahmacmillan@btinternet.com
T 01546 870610
M 07876820815



Working from my home in Lochgilphead I use a range of yarns and wool fibres, including my own hand-spun yarn, to create wet-felted pictures, woven tapestries and hand-woven fabrics inspired by the dramatic land and seascapes of Argyll.

The tactile process of working with yarn and wool fibres brings a true connection to the medium, allowing me to capture my love of Argyll and the ever-changing light into a visual piece of work.

E woollybobbins@gmail.com
T 01546 603108
M 07714250220

Opening Arrangements:

- Friday 23rd to Monday 26th August
- Saturday 31st August to Sunday 1st September

23rd & 26th August open 5.30pm - 8pm.
 Both Saturdays & Sundays 10am - 6pm.
 All year by appointment.

Address: 13 Fernoch Crescent,
 Lochgilphead, Argyll PA31 8AE.

Directions: Coming from the centre of Lochgilphead, turn left at the Parish Church and follow the road past the Co-op. After passing a church on your left turn right into Fernoch, take your 2nd left and follow the road up the hill until you reach a large speed bump. We are on the top side of the road. Look for the red dots in the tree!



Opening Arrangements:

- Friday 23rd to Monday 26th August
10am - 5pm

Visitors are welcomed all year round
by appointment.

Address: 73 Argyll Street,
Lochgilphead, Argyll PA31 8NE.

Directions: No 73 is located diagonally
across from the Lochgilphead post office.
The house has yellow window surrounds.

W www.lesleyburr.co.uk

E artistlesleyburr@gmail.com

M 07917567268

I have a fascination with chronicling themes of nature such as changing light, fragility and transformation in the landscape. Following selection as 2019 artist in residence with Friends of the Scott Polar Research Institute I will be researching and documenting Arctic inspired themes influencing a new body of work over the coming years. Studio visitors will be able to see paintings, ceramic sculptures, tiles, small prints and cards.



Argyll College is the first educational centre in Argyll to offer a full-time Arts Course. We deliver a range of full-time, part-time and evening courses to suit all levels of experience. Over the Artmap weekend we are exhibiting student and tutor artwork while hosting a variety of taster workshops. Contact us for a full list of workshops and to book a place in advance.

Opening Arrangements:

- Friday 23rd to Monday 26th August
10am - 5pm

We are open throughout the year as an educational facility.

Address: Argyll College,
Lorne Street, Lochgilphead PA31 8LU.

Directions: Facing North on Argyll Street in Lochgilphead, take the first left on to Lorne Street. Argyll College is the last building on the left.

W www.argyllcollege.ac.uk

T 01546 600070



Opening Arrangements:

- Friday 23rd to Monday 26th August
10am - 5pm

Studio welcomes visitors throughout the year by appointment.

Address: Art Studio & Garden,
Stronvay, Manse Brae,
Lochgilphead PA31 8QZ.

Directions: Facing the church at the north end of Argyll Street in the centre of Lochgilphead - take 2nd exit. Follow road up-hill to bend (left) in road. 3rd on the right leads you into Manse Brae (signposted). 100 yards on (shore side) is house and studio. Look for RED dots!

I work with a combination of process and skills - 2D and 3D - indoors and out. Responding to the landscape and environment is intuitive and keeps me attuned to nature in a physical, mental and challenging way. I enjoy working to themes through both dimensions. Ideas develop through observation and drawing and scrutiny.

W jane-walker-studio.com
E janewalker904@gmail.com
T 01546 603037
M 07785524521



The Dochas Centre doubles as a Gallery and Carer's Centre. We exhibit the work of the centre's founder John Paterson as well as exhibitions from local groups and artists. We run support groups and we work closely with all external agencies including Alzheimers Scotland, Parkinson's Society, Macmillan Cancer Support. Artmap Argyll Associate Members will be showing in the Dochas Gallery during August.

Opening Arrangements:

● Friday 23rd to Monday 26th August
10am - 5pm

Address: 50 Campbell Street,
Lochgilphead PA31 8JU.

W www.dochasfund.org.uk

T 01546 600022

**Opening Arrangements:**

- Friday 23rd to Monday 26th August
10am - 5pm
- Saturday 31st August to
Sunday 1st September
10am - 5pm.

Address: Love Dove Studio,
Colchester Square,
Lochgilthead PA31 8LH.

W www.lovedovecottage.com

E lovedovecottage@gmail.com

M 07493523530



This year my focus is bringing my passion for wild swimming and my love for the creatures of the ocean together in relief and three dimensional stone carvings. Please come and visit my workshop and try some stone carving for yourself.

Opening Arrangements:

● Friday 23rd to Monday 26th August
10am - 5pm

Address: 1 Ballibeg, Castleton,
Lochgilphead PA318RU.

Directions: From Lochgilphead, take the A83 towards Glasgow. After approx 3 miles turn left at the stone house, opposite the turning to Castleton. Drive up the hill and bear left. My house is the second on the left. Go through the garden gate to my workshop.

W www.melaniechmielewska.co.uk

E melaniesculpture@gmail.com

T 01546 606625

M 07864573682



Opening Arrangements:

- Friday 23rd to Monday 26th August
10am - 5pm
- Saturday 31st August to
Sunday 1st September
10am - 5pm.

Address: North Lodge, Castleton
By Lochgilphead PA31 8RU.

W www.lauraclarkart.com

E l-clark@outlook.com

My focus is oil painting and pyrography that captures the essence of wildlife and nature, bringing a little moment of reflection, character and poise to the viewer.



The Steamer Terminal is an exciting new destination hub at the gateway to the Crinan Canal.

Perched on Ardrishaig's timber pier, The Steamer Terminal offers up breakfast, lunch and beyond using the very best of Argyll's natural larder. From full Scottish breakfasts to scrumptious home baking, it's the perfect spot to start (or end) your journey along 'Britain's most beautiful shortcut'!

Opening Arrangements:

- Friday 23rd to Monday 26th August
10am - 5pm
- Saturday 31st August to
Sunday 1st September
10am - 5pm.

We are open Monday to Saturday from 10am to 5pm and Sundays from 12 noon to 6pm.

Address: The Steamer Terminal,
Pier Square, Ardrishaig
Lochgilthead PA30 8DZ.

W www.scottishcanals.co.uk/destinations/ardrishaig/steamer-terminal/

T 01463 725583

**Opening Arrangements:**

- Friday 23rd to Monday 26th August
10am - 5pm
- Saturday 31st August to
Sunday 1st September
10am - 5pm.

You can visit Richard in his gallery and studio from May until late September - 11.00am to 5.00pm. He is open Wednesday to Sunday but will be available for all of the Artmap Weekend.

Address: Bole the Gallery, Fieldhouse Kilberry, Argyll PA29 6YD.

Directions: From Lochgilphead turn south towards Campbeltown (A83) After 4 miles turn right, signposted Kilberry (B8024) From Tarbert travelling in either direction take the turn signposted Kilberry (B8024).

Winner of "Craft & Design" magazine's selected maker of the year; wood and metal category, Richard has been creating Wood Art for several years. Each piece takes several weeks to make due to the intricate detail. Richard has made work that's displayed around the world. A member of the Register of Professional Turners, he is committed to producing some of the finest turned art available in the country today.

W bolegallery.com

T 01880 770202



Born and raised in Glasgow, Kate received her first BSc in her 20's and went on to finely develop her artistic career alongside activities as a colour chemist which she utilizes today in her artwork to create her distinctive Neo-Naïve style. After studying with OCA, and privately at various master ateliers in Switzerland, 2018 saw Kate move her studio to the Isle of Tiree. 2019 will be her first time contributing to Artmap Argyll.

Opening Arrangements:

- Friday 23rd to Monday 26th August
10am - 5pm
- Saturday 31st August to
Sunday 1st September
10am - 5pm.

Address: Tiree Art Studio, Airport View,
Crossapol, Isle of Tiree PA77 6UP.

Directions: Follow the signs for Tiree
Airport. Airport View and Tiree Art Studio,
is the last house before the turnoff onto the
Airport Road.

W www.BauenArt.com

E kate@bauenart.com



holiday home for an art lover

www.auchgoylebaycottage.scot



THE SQUARE PEG

LOCHGILPHEAD



Jolomo Tableware

Evening Night, North Pier Oban



Cath Waters Homeware

Arran over the Sound of Bute



Kevin Hunter Prints

Eilean Donan Castle Sunset

GIFTS - TOYS - CARDS - SNACKS

Original and thoughtful gift ideas, toys and greetings cards. Home-baking and take-away lunches freshly prepared daily



0 1 5 4 6 - 6 0 2 4 4 5

www.thesquarepegonline.co.uk

11 Argyll Street, Lochsillphead, PA31 8LZ
+44 (0)1546 606 292
orders@marmaladedeli.com
www.marmaladedeli.com



we love art
almost
as much as
we love food

MARMALADE DELI

The Bookshop



Books, Maps, Stationery, Games, Toys.

If we don't have it in stock we are happy to help you....

Local visitors information Point in the Bookshop.

Lorne Street, Lochgilphead, Argyll PA31 8LU. Tel: 01546 603596
Email: argyllbookcentre@gmail.com fb: Lochgilphead Bookshoop

Loch Fyne®



LOVE SEAFOOD

Visit the Loch Fyne Oyster Bar & Deli
Cairndow, Argyll, PA26 8BL
10 minutes from Inveraray on the A83

Open all year round,
booking recommended
tel 01499 600482 or visit our website
www.lochfyne.com



COACH HOUSE COFFEE SHOP

AWARD WINNING COFFEE & GIFT SHOP SET IN THE HEART OF THE CONSERVATION VILLAGE OF LUSS, LOCH LOMOND, NEXT TO THE CHURCH.



CAPPUCCINOS, SPECIALITY TEAS, HOME BAKING,
HOME MADE SOUPS, FOOD SERVED ALL DAY,
OUTSIDE SEATING WHEN THE WEATHER IS GOOD,
ROARING LOG FIRES IN THE WINTER,
DOGS ARE WELCOME IN OUR GARDEN AREA.



VISIT SCOTLAND
SILVER MEDALLION WINNER

AND ... ALL OUR WAITERS WEAR THE KILT!

OPEN ALL YEAR 7 DAYS 10AM -5PM *CLOSED CHRISTMAS DAY ONLY

TELEPHONE: 01436 860341 ENQUIRIES@LOCHLOMONDTRADING.COM



On the Crinan Canal
Real Ales, Real food, Real welcome.

www.cairnbaan.com
01546 603668



The Archway Gallery

7 Union Street, Lochgilphead, Argyll

PA31 8JS

Tel: 01546 606894

info@thearchway.co.uk



Art Gallery
Picture Framers
Art Supplies
Gift Shop

Mon to Sat 10am-5pm



Cowal Open Studios

27th-30th September 2019

Come and see the work being produced
by artists and makers on the Cowal Peninsula.



www.cowalopenstudios.co.uk

info@cowalopenstudios.co.uk

 @CowalStudios





A taste of Argyll:

Locally dived scallops with Stornoway black pudding,
succulent steaks from Jacksons of Oban butchers,
freshly caught crab from the Sound of Jura.

Loch Fyne Ales & Orkney Brewery beers on draught.

Extensive collection of local gins.



Tayvallich, Lochgilphead, PA31 8PL

For reservations contact us on: 01546 870282

www.tayvallichinn.com



LOCH FYNE GALLERY

GIFTS : JEWELLERY : BOOKS

GREETINGS CARDS

STATIONERY : ARTWORK

Harbour Street, Tarbert PA29 6UD. Tel: 01880 820390

info@lochfynegallery.com www.lochfynegallery.com

OPEN SEVEN DAYS

OBAN ART SOCIETY SUMMER EXHIBITION

August 31st to September 7th

10.30 - 5.30

**Cadet Hall, Tweeddale Street,
Oban**

FREE ADMISSION

works by local artists for sale



The Jetty Gallery

Open Mon, Fri, Sat 10 – 5pm Wed, Thurs 10 – 2.30pm

Featuring an ever changing collection of original artwork by established & emerging artists - Paintings, Sculpture, Ceramics, Wood, Glass and Jewellery.

Prices ranging from small crafts at £10 – fine art up to £6,000

100, George St, Oban, Argyll PA34 5NR

Tel: 01631 570 102 www.thejettygallery.com



Find us down Smithy Lane, Lochgilphead.

Monday to Saturday - 10am to 5pm.

Tel. 01546 603 606



FULL MEMBERS NOT OPEN 2019

Alan Cunningham

Working mostly three dimensionally in wood, copper, paint and other materials.

traighean.online **W**

traighean@gmail.com **E**



George John Stewart

Welcome to Dove Cottage Studio 2019.
Plenty of new artwork on display ... come along and see.

www.georgestewartartist.com **W**

E dovecottagestudio@gmail.com **M** 07493523530



Kerrien Grant

Kerrien enjoys experimenting with the textures and effects that she can achieve with acrylics in particular, and uses these to give movement and light to her paintings.

www.coastwoodgallery.co.uk **W**

E kerrien@coastwoodgallery.co.uk **M** 07824611869



FULL MEMBERS NOT OPEN 2019



Liz Gaffney-Waite

Much of my present work is imprinting and dyeing with local natural plant materials.

W www.heartfeltbyliz.com

E info@heartfeltbyliz.com **T** 01838 200934



Victoria Maxwell-MacDonald

Artist, Kintyre

W www.victoriamaxwellmacdonald.co.uk

E victoria.maxwell.macdonald@gmail.com



Ann Thomas

Specialising in Sea, Sky and Landscape Watercolours and Acrylics.

W www.annthomas-paintings.co.uk

E ann@annthomas-paintings.co.uk **T** 01880 820724



Jane Allan

Functional baskets in traditional styles, handcrafted in Achnamara from naturally coloured homegrown willow.

W www.seafieldfarmcottages.co.uk

E seafield3@btinternet.com **T** 01546 850274



Karen Liversedge

Karen is a designer, making to commission bespoke fashion and accessories, architectural glass and sculptural pieces.

W www.karenliversedge.com

E karenliversedge@hotmail.co.uk **M** 07799350039



Hana Wilde

Mixed media

E hana.r.wilde@gmail.com

M 07791402568



Rob Walker

E robertwalker@hotmail.com

ASSOCIATE MEMBERS 2019

Keira Anderson

Design thinking and design education.
Image making with toy cameras, homemade
screenprinting, pen and paint.

akidfromkibble@googlemail.com **E**
07840553846 **M**



Jan Oliver

I just love to paint. I find my inspiration everywhere.
Forests the sea and sky or a quirky gateway.

jan_duncker@yahoo.co.uk **E**
01546 870636 **T**



Andrew McCallum

I design and hand make all types of jewellery from my
workshop in Dalavich on Loch Awe. Including Scottish
and Celtic, Animal, Designer and Fine Jewellery.

www.andrewmccallumjewellery.com **W**
andrew@andrewmccallumjewellery.com **E**
T 01866 844355 **M** 07981107791



Hazel Ewart-Mills

Hazelmadeitfelt : Big hats, small hats, art,
wraps, workshops and more; ready to wear
and made to order.

www.hazelmadeitfelt.co.uk **W**
E info@hazelmadeitfelt.co.uk **M** 01852 678991



Gini Dickinson

ginid@hotmail.co.uk **E**
07983484626 **M**



ASSOCIATE MEMBERS 2019



Sheila Quillin

Sculptures that bring out the hidden beauty of the wood, asking to be picked up, handled and held, each piece is a unique, inspired by the natural world.

E voirrey@voirrey1.com

T 01852 300337



Erin Barker

I'm an author, illustrator and interested in portraiture, animals and mythology.

E www.erinbarkerart.co.uk

W erin@erinbarkerart.co.uk



Gill Stewart

"I draw my inspiration from natural surroundings particularly the wind and sea, more recently taking a new direction involving sea and flower motif collage work".

E lovedovecottage@gmail.com

M 07493514261



Brian Barker

E brian@barkernet.co.uk

M 07708461081



Deborah Gray

Deborah is a textile artist based in Oban. Working mainly in wool, recent work connects the made item with the place of making.

E deborah.gray7@btinternet.com

M 07776092903

ASSOCIATE MEMBERS 2019

Katherine Pixie

katiepixie666@icloud.com E



Alison McAlpine

dykesmcalpine@btinternet.com E



Elma Nee

elmaneeseil@gmail.com E
01852 300241 T



Elizabeth Carter

shouldhamthorpe-artist@sky.com E
07786896591 M



Julie Henderson

theweefeltartco@yahoo.com E
07765637864 M



Jane Harrison

jih6pt@hotmail.com W
07747536803 M



Artmap Argyll is a network and membership organisation open to professional and aspiring artists alike. We help artists network with each other and to share their work and experience with a wider audience.

Our vision is to ensure that Argyll is recognised as a vibrant, creative hub. We deliver a range of events, public art installations and workshops that offer artists opportunities to collaborate on art projects, share ideas and exchange information.

Our annual Red Dot Studio Trail is Argyll's premier visual arts event and it is evident that sales and revenues provide a boost to the local economy.

As a social enterprise company, all our funds are used for activities that benefit Argyll's artists and communities. We are looking for new artists to join us so we can help them share their work through studio visits and sales.

Full and Associate Member fees are £30 per year. Young Associate Members and Friends pay £15 per year. Full Members taking part in the Open Studios event pay an additional fee.

If you're interested in joining Artmap Argyll, please go to artmapargyll.co.uk/join-artmap/ or e-mail us at members@artmapargyll.co.uk

THANK YOU

We are indebted to and extremely grateful for the continued support from: AITC, Creative Scotland, Heart of Argyll, Kilmartin Museum, Scottish Canals, Scottish Natural Heritage, talc, Ventient Energy A'Chruach Community Fund, CHArts and each of the advertisers and venues who provide invaluable support without which Artmap Argyll would not be able to thrive.

We are also thankful to our volunteers, partners, spouses and families for their support throughout the year.

Disclaimer: Please use the map and directions in conjunction with your own road maps. Artmap Argyll accepts no liability for any loss, damage or injury sustained by any member of the public visiting any venue participating in the open studio event listed in this brochure. Visiting adults are responsible for the supervision of any children in their care. It is not permissible to take pets of any sort into the venue area. It is the venue's responsibility to have liability cover. Whilst every effort is made by artists to ensure that the venues are as safe as possible, visitors should be aware that the studios are working environments and can be dangerous places. Great care must be exercised when visiting as there may be hazardous substances and/or tools and powerful machinery. Please treat all venues with respect and remember that many of the artists work from home.

Contact: admin@artmapargyll.co.uk

Follow us on Instagram, Facebook & Twitter:

[instagram.com/artmapargyll](https://www.instagram.com/artmapargyll) • [facebook.com/artmap](https://www.facebook.com/artmap) • twitter.com/artmapArgyll

**23rd to 26th August
31st August & 1st September
10am-5pm**

The annual Artmap Argyll Red Dot Open Studios event is in its 12th year and has grown from the original 20 studios to the broad mix of artists you see today. The growth in popularity of the event means that studios will be open over two weekends – the usual August Bank Holiday date and some of the studios will be open into the following weekend of 31st August & 1st of September. Also, look out for special events and exhibitions throughout the year.

Visit us at artmapargyll.co.uk