



## Artmap Argyll

Artmap Argyll is committed to supporting the creation and presentation of high quality art in Argyll.

We work across the public, private and third sectors, creating projects that seek to enrich the lives of individuals and communities, bringing social and economic benefit.

We promote partnerships between professionals working in the creative industries, tourism, business, education and the environment.

## Studio Directory No.9



## Artists &amp; Venues

01	Port Appin Studio	25	Ross Ryan
02	Katy Spong	26	Louise Oppenheimer
03	Crubag - Jessica Giannotti	27	Kerrien Grant
04	Fiona MacRae	28	Melanie Chmielewska
05	Carol Olsen	29	Kate MacDonald
06	Lucy Gray	30	Caroline Hunter
07	Ewen Munro	31	Jane Smith
08	Liz Gaffney Whaite	32	Caroline Plummer
09	Art in the Attic	33	Libby Anderson
10	Loch Melfort Hotel & Arduaine Garden	34	Susan Berry
11	Corrie House	35	SNH Art at the Mill
12	Arthur Ker	36	Susannah MacMillan
13	Margaret Ker	37	Fiona MacDonald
14	Inge Bos	38	Kirsty Brady
15	David Bracken	39	Lesley Burr
16	George John Stewart	40	The Archway
17	Kilmartin Museum	41	The Dochas Gallery & Carer's Centre
18	Bill Baillie	42	Jane Walker
19	Sian MacQueen RSW	43	Ann Thomas
20	Laura Clark	44	Wilma MacKenzie
21	Rebecca Barnett	45	Templar Arts & Leisure Centre
22	Rob Walker	46	Richard Kennedy
23	Karen Beauchamp	47	Glenbarr Cafe
24	Frances Macdonald	48	Christine Russell

Please note: Many artists do not have card facilities should you wish to make a purchase. Some have online payment options while some can only receive cheques or cash.

## 9th Annual Open Studios

26th - 29th Aug 2016 10am - 5pm

With Artmap's 9th brochure in hand to fuel curiosity and a sense of adventure, bring your friends and family with you to follow the annual display of numbered red dots along roads wherever our artists live and work.

Whether your interests focus on painting, sculpture, glass, digital art, textiles, wood or willow, or you have an open mind and eclectic taste, taking in all creative mediums, you could do no better than beat a path to open doors where you'll be assured of a warm welcome and rich experience within each unique space, over the four days open studios from 26th-29th August.

See the tools, dip into sketchbooks, meet the artists and view the work to discover a myriad of different skills and individual approaches to the making of visual and tactile, expressive art. Many artists provide opportunities to gain hands-on experience with their materials so why not take advantage to have a go?

We hope you enjoy Argyll's cultural diversity and to say thank you for visiting the Open Studio event, we are offering a prize draw of £200 to spend in the studio of your choice. To enter just pick up a red dot sticker available in every studio and collect 8 or more for your chance to win.

Don't forget to keep this directory for further reference though, because unlike hedgehogs, Artmap artists don't hibernate but thrive on making new work and welcome the opportunity to show visitors what they are doing throughout the year.

[www.artmapargyll.com](http://www.artmapargyll.com)



## PORT APPIN STUDIO

1



Port Appin Studio is the workplace of Alex Gourlay (painter/designer) and his wife Midge Gourlay (textile artist), graduates of Glasgow School of Art. Visit the studio to meet the artists and see work in progress. Paintings, prints and textile artworks are available for sale at the studio, by appointment, phone or e-mail, or via our website online shop where our range of work can be viewed. Commissions welcomed.

**Opening Arrangements:**

During Open Studios Weekend:  
Daily. 11.00 - 16.00h.  
At other times: by appointment.

**Address:** The Studio, The Pier,  
Port Appin, Argyll PA38 4DN

**Directions:** Off the A828 north of Oban, follow the signs into Port Appin. The studio is next to the carpark at the end of the road by the ferry.

**W** [www.portappinstudio.co.uk](http://www.portappinstudio.co.uk)  
**T** 01631 730 594

## KATY SPONG

2



**Opening Arrangements:**

Fri 26th to Mon 29th Aug 10am - 5pm.  
Open to visitors all year round by appointment.

**Address:** Crioch, Duror, Appin  
Argyll PA38 4DA

**Directions:** Cuil Bay is located off the A828 between Ballachulish and Appin. Signposted Cuil - approximately half a mile from the turn off turn right down a rough track road. The studio is located at the 7th house.

My paintings and prints draw inspiration from the unique landscape and nature of the west coast of Scotland, in particular the theme of movement and change in activity within the environment of Loch Linnhe. This is often revealed in the birdlife of the bay. My imagery draws very largely on the cumulative experience of looking and the memory of the observed moment.

**W** [katyspong.co.uk](http://katyspong.co.uk)  
**E** [studio@katyspong.plus.com](mailto:studio@katyspong.plus.com)  
**T** 01631 740 240  
**M** 07739 423 289

## CRÙBAG - JESSICA GIANNOTTI

3



Jessica launched Crùbag with a dream to embrace her love for the oceans, marine science and the arts. The vision is to communicate the importance and beauty of research and the oceans through textile design with comprehensive science outreach. Using software, digital photography, microscopy imaging, manual and digital illustrations, and artistic interpretations, a visually striking textile collection emerges, with bold representations, repetition patterns, textures, abstracts and depictions of subject.

**W** [www.crubag.co.uk](http://www.crubag.co.uk)  
**E** [jessica@crubag.co.uk](mailto:jessica@crubag.co.uk)  
**T** 01631 559 282  
**M** 07769 636 478

**Opening Arrangements:**

Fri 26th to Mon 29th Aug 10am - 5pm.  
 Crùbag's studio is based at the old teaching lab at SAMS. Visitors are welcome by appointment and our collections are always available for viewing and for purchase at the Ocean Explorer Centre (OEC) at the Scottish Marine Institute (opposite to our studio). OEC is open to the public all year round.  
[www.oceanexplorercentre.org](http://www.oceanexplorercentre.org)

**Address:** Crùbag, Scottish Marine Institute, Oban, Argyll PA37 1QA

**Directions:** We are in Dunbeg near Oban - On A85 follow signs; for SAT NAV: PA37 1QA; by bus 405/005 Oban to Dunbeg. We are next to Dunstaffnage Castle and SAMS.

## FIONA MACRAE

4

**Opening Arrangements:**

Fri 26th to Mon 29th Aug 10am - 5pm.  
 By appointment throughout the year.

**Address:** Achnahannait, Glen Lonan, Taynuilt, Argyll PA35 1HY

**W** Facebook ; fiona macrae artist  
**E** [feefo@fionamacrae.com](mailto:feefo@fionamacrae.com)  
**T** 01866 822 224  
**M** 07743 378 671

Fiona's paintings are becoming less about fish, lemons and pots and more to do with colour, form and space, with an apparent simplicity of construction. Although they are still life paintings their roots are in the natural environment. Spring greens, summer blues, autumn hues and winter days.

Drawing & Painting, Mixed Media, Jewellery, Textiles

## CAROL OLSEN

5



This year I am developing the gutta and wax effects of painting on silk. New methods of surface design are being experimented with. The production of silk scarves and paintings being the focus.

Jewellery – Is taking a metamorphosis and changing the style of the finished product. A more organic and less controlled image is emerging. New lines are under development. Trained at Sir John Cass School of Art, London.

**Opening Arrangements:**

Fri 26th to Mon 29th Aug 10am - 5pm.

**Address:** Ardchuan, Glen Lonan, Taynuilt, Argyll PA35 1HY

**Directions:** From the A85 take the Glen Lonan road from the village of Taynuilt in a southerly direction for 0.8 of a mile. I am on the right, before Airdeny Chalets. The Sat Nav is accurate for this address.

**W** [www.carolodesign.com](http://www.carolodesign.com)

**E** [vibrantsilks@googlemail.com](mailto:vibrantsilks@googlemail.com)

**T** 01866 822 580

**M** 07762 205 313

Drawing & Painting, Mixed Media, Sculpture

## LUCY GRAY

6



**Opening Arrangements:**

Fri 26th to Mon 29th Aug 10am - 5pm.

**Address:** Airds Bay House, Taynuilt Argyll PA35 1JR

**Directions:** From Oban, Take the A85 towards Connel. Continue through Connel. Just as you enter the 30mph zone for Taynuilt, turn left (signpost, Airds Bay). Take the first left, (stone gate posts, open gate). When you come to the fork, where you will be able to see the house. Keep left.

**E** [graylucy@live.co.uk](mailto:graylucy@live.co.uk)

**T** 01866 822 286

**M** 07934 421 784

Lucy Gray completed a Fine Art Sculpture Degree at Central School of Art where she achieved a 1st class Honours Degree. Following a print making Diploma she began her training in the restoration of lacquered and gilded surfaces. The influences of her continued work in this field can frequently be found in her sculpture.

"In my work I translate an idea through natural forms, capturing the tipping point, the metamorphosis".



## EWEN MUNRO

7



Ewen's passion for photography began whilst studying woven textile design in the early 80's. His enthusiasm for creating images has developed from a close interest in the unique Lorn light, colour and reflections alongside textures of waterside rust and decay. Since moving to awesome Argyll in 2004, a growing interest in digital photography as a creative tool has enabled Ewen to discover new possibilities for his inspired photographic imagery.

**Opening Arrangements:**

Fri 26th to Mon 29th Aug 10am - 5pm.

**Address:** Airds Bay House, Taynuilt Argyll PA35 1JR

**Directions:** From Oban, Take the A85 north, continuing through Connel towards Taynuilt. Almost immediately as you enter the 30mph zone for Taynuilt, turn left (sign post, Airds Bay). Continue down this single track road then taking the first left (stone gate posts, open gate). You will come to a fork in the lane where you will see the Airds Bay House. Please keep left.

**W** [www.ewenmunrophotography.com](http://www.ewenmunrophotography.com)

**E** [info@ewenmunrophotography.com](mailto:info@ewenmunrophotography.com)

**T** 01631 569 632

**M** 07795 604 455

## LIZ GAFFNEY WHAITE

8

**Opening Arrangements:**

Fri 26th to Mon 29th Aug 10am - 5pm.

Open throughout the year Thursdays, Fridays and Saturdays from 10am- 5pm.

Also open by appointment, please phone to arrange.

**Address:** Dalmally Railway Station Callender/Oban Line

**Directions:** Heartfelt Studio is in Dalmally Railway Station and is entered from the station platform. Ample parking in the adjacent railway car park. All trains from Oban to Glasgow on this line stop at Dalmally Station

**W** [www.heartfeltbyliz.com](http://www.heartfeltbyliz.com)

**E** [info@heartfeltbyliz.com](mailto:info@heartfeltbyliz.com)

**T** 01838 200 934

Liz Gaffney Whaite is a textile artist who has been felt making and teaching textile art for 20 years in Scotland.

Heartfelt Studio is situated in a Victorian Railway station which Liz and Graham are restoring and living in.

The Studio is open to visitors all year round with a wealth of wools and textiles.

Workshops are run from the station studio throughout the year.

## ART IN THE ATTIC

9



Art in the Attic is situated above Kilmelford Village Store and Café. We have a range of arts and crafts on display by local artists, ranging from original paintings, bespoke glass sculptures, stone work, Harris tweed and much more. During August, including the Artmap open studio event, Karen Liversedge, glass and textiles, and Pip Weaser, basketry, will be exhibiting.

**Opening Arrangements:**

Fri 26th to Mon 29th Aug 10am - 5pm.  
Open throughout the year Monday to Saturday 9am till 5.30pm and Sundays 10am till 3pm.  
Please note that the Café is closed on a Monday but the artwork can still be viewed.

**Address:** Sarah-Jane Edwards or Ruth McCowan, Kilmelford Village Store, Kilmelford, Argyll, PA34 4XA

**Directions:** Kilmelford Village Store and cafe is on the main Lochgilphead - Oban road in the centre of the village opposite Cuilfail Hotel.

**E** [honeytummy@hotmail.co.uk](mailto:honeytummy@hotmail.co.uk)  
**T** 01852 200 271

10

## LOCH MELFORT HOTEL & ARDUAINE GARDENS



**Opening Arrangements:**

Open every day 9.30am - dusk.  
Entrance to the garden - 50% off NTS entrance fee during Open Studio weekend. Entrance to hotel via main reception doors. Meals, drinks and light refreshments all day.

**Address:** Arduaine, Argyll, Oban PA34 4XG

**Directions:** A816 18 miles south of Oban, 18 miles North of Lochgilphead.

**W** [www.lochmelfort.co.uk](http://www.lochmelfort.co.uk)  
**E** [reception@lochmelfort.co.uk](mailto:reception@lochmelfort.co.uk)  
**T** 01852 200 233

Stunningly located - the views are a picture worth taking! Various artists exhibiting in the hotel and garden. Join Arduaine Friends for a Walking Theatre production of a Highland Murder Mystery Wedding on Fri 26 August at 7pm.



## CORRIE HOUSE

11



Corrie House is a 5 star Gold B&B with gardens and Cook School in a heart stopping coastal setting overlooking Craobh Haven Marina, inlets, mountains and islands.

**Opening Arrangements:**

Fri 26th to Mon 29th Aug 10am - 5pm. Any art in the garden can be viewed anytime, artist details will be on the main gate. Any indoor art viewed by arrangement as and when we have exhibits.

Artmap weekend: Teas, Coffees and Cakes available 10 am - 5pm

**Address:** Corrie House, Craobh Haven, Argyll, PA31

**Directions:** A816 23 miles South of Oban, 8 miles N of Lochgilphead. Turnoff for Craobh Haven and follow signs to Corrie House/Corrie Cook School.

**W** [www.corrie-house.com](http://www.corrie-house.com)  
**E** [info@corrie-house.com](mailto:info@corrie-house.com)  
**T** 01852 500 779

12

## ARTHUR KER



**Address:** Caorann, Ford, Argyll & Bute PA31 8RH

**Directions:** Follow A816 through Kilmartin towards Oban for 1 mile. Turn right on to B840 to Ford. After Ford, continue towards Dalavich for 1 mile. Caorann is on the left overlooking Torran Bay on Loch Awe. I'm in the garage studio.

**W** [www.arthurker.com](http://www.arthurker.com)  
**E** [kerarthur@aol.com](mailto:kerarthur@aol.com)  
**T** 01546 810 375  
**M** 07540 300 239

Working in a range of media in my landscape paintings, I try to capture the colours and moods of the changing seasons; the fresh tints of spring, the saturated colours of summer, the blazing shades of autumn, and winter's subtle greys and ochres. This year I will also be showing illustrations and layouts for a book 'Close Encounters in the Forest'.

**Opening Arrangements:**

Fri 26th to Mon 29th Aug 10am - 5pm. All year by appointment.

## MARGARET KER

13



The landscape, the geology and the pre-history of Argyll are the inspiration for my work. Fascinated by the incredible beauty of the dark skies I often incorporate images of constellations in my mosaics and silver jewellery. I employ an experimental approach to expressing my ideas and I enjoy using a broad range of media. I regularly work to commission.

### Opening Arrangements:

Fri 26th to Mon 29th Aug 10am - 5pm.  
All year by appointment.

**Address:** Caorann, Ford, Torran Argyll. PA31 8RH

**Directions:** Follow A816 through Kilmartin towards Oban for 1 mile. Turn right on to B840 to Ford. After Ford continue towards Dalavich for 1 mile. Caorann is on the left overlooking Torran Bay on Loch Awe.

**W** [www.margaretker.com](http://www.margaretker.com)  
**E** [kermargaret@aol.com](mailto:kermargaret@aol.com)  
**T** 01546 810 375  
**M** 07889 966 585

14

## INGE BOS



### Opening Arrangements:

Fri 26th to Mon 29th Aug 10am - 5pm.

**Address:** Ford House, Ford, PA31 8RH

**Directions:** From A816 turn on to the B840 to Ford. Ford House is in the centre of the village.

**W** [www.ingebos.com](http://www.ingebos.com)  
**E** [inge@ingebos.com](mailto:inge@ingebos.com)  
**T** 01546 810 273

Inge works on paper and wooden panels, her works emerging from structure, intentionally, sometimes dictated by the wood's grain. Her work focuses on presence, an environment-specific here and now. She makes photographs of landscapes, that she might identify structures in the interplay of dark and light. Structures invoke presence. Presence defines structure. Together they inhabit the moment, invoke memories - this experience sets the image in motion and alters reality.

## DAVID BRACKEN

15



David uses the natural form of wood in everyday objects, using native woods that are mainly windfall or removed due to disease or for safety reasons. He takes on commissions and develops bespoke works as well as progressing his own ideas, he also teaches woodturning. His work bridges a craft to an artform by using the natural beauty of wood which is enhanced by colour, texture, and/or piercing.

**Opening Arrangements:**

Fri 26th to Mon 29th Aug 11am - 5pm.

**Address:** The Old Manse, Kilmartin  
Lochgilphead, PA31 8RQ

**Directions:** Entering Kilmartin from the North The Old Manse is the fifth building on the left. Entering Kilmartin from the South drive past the museum and down the hill. The Old Manse is 100 meters past the Kilmartin Garage and on the right.

**W** [www.turning.me.uk](http://www.turning.me.uk)  
**E** [david@turning.me.uk](mailto:david@turning.me.uk)  
**T** 01546 510 202

16

## GEORGE JOHN STEWART

**Opening Arrangements:**

Fri 26th to Mon 29th Aug 10am - 5pm.

**Address:** Dove Cottage, 7 Kilmartin  
Kilmartin, Argyll PA31 8RN

**Directions:** Entry from lane behind Kilmartin shop, which is opposite Museum. Directions on website [www.facebook.com/dovecottagestudio](http://www.facebook.com/dovecottagestudio).

**W** [www.lovedovecottage.com](http://www.lovedovecottage.com)  
**E** [dovecottagestudio@gmail.com](mailto:dovecottagestudio@gmail.com)  
**T** 01546 510 289  
**M** 07748 125 105

I am an artist and illustrator in most media, but with a particular love of watercolour and gouache. My wife Gill and I work together as Dove Cottage Studio in Kilmartin. We owned and ran the award-winning Oystercatcher Gallery in Campbeltown until 2011. Much of my recent work is inspired by Gill's flower designs for weddings and events. I am currently preparing an illustrated book on the Crinal Canal.

## KILMARTIN MUSEUM

17



Kilmartin Museum is a renowned centre for archaeology and landscape interpretation. Our shop offers many goods from local craftspeople and the walls of our café are adorned with vibrant works of art created by local artists, many inspired by the unique atmosphere of Kilmartin Glen. During 2016 we are planning a number of different exhibitions - full details available from our website.

**Opening Arrangements:**  
Open 10am to 5pm every day.

**Address:** Kilmartin Museum,  
Kilmartin, Lochgilphead PA31 8RQ

**Directions:** From Lochgilphead follow the A816 signposted Oban. After approximately 8 miles you will enter the village of Kilmartin and the Museum car park can be found on the left. From Oban follow the A816 signposted Lochgilphead. Kilmartin is approximately 30 miles south of Oban and the Museum car park is on the right about 1 mile after entering Kilmartin.

**W** [www.kilmartin.org](http://www.kilmartin.org)  
**E** [admin@kilmartin.org](mailto:admin@kilmartin.org)  
**T** 01546 510 278

18

## BILL BAILLIE



**Opening Arrangements:**  
Fri 26th to Mon 29th Aug 10am - 5pm.

**Address:** The Mill, Slockavullin,  
Kilmartin, Lochgilphead,  
Argyll PA31 8QG

**W** [www.rainycloudimages.com](http://www.rainycloudimages.com)  
**E** [billbaillie@rainycloudimages.com](mailto:billbaillie@rainycloudimages.com)  
**T** 01546 510 359

Bill's father gave him a hefty Zenith camera for his eighth birthday and he's been taking photos ever since. He discovered Argyll when he was just 12 and even at that early age knew that one day he would live here. He divides his time between his two passions: photographing the Argyll landscape and bringing up his family.

## SIAN MACQUEEN RSW

19



An elected member of the RSW, Sian trained at Glasgow School of Art.

"Argyll - the colour, texture and light, I use as both subject and setting for my uniquely layered work.

My paintings and sculptures evolve as I work. At the start of the process I have no idea what imagery they will contain, places and objects emerge from my memory and imagination as I go."

### Opening Arrangements:

Fri 26th to Mon 29th Aug 10am - 5pm.  
Year round by appointment.

### Address:

Mill Cottage, Slockavullin, Kilmartin  
Argyll PA31 8QG

**Directions:** Slockavullin is a mile south of Kilmartin village and is tucked in behind Temple Wood Standing Stones - my studio at Mill Cottage is first on the left as you enter the village.

**W** [www.sianmacqueen.com](http://www.sianmacqueen.com)

**E** [sianmacqueen@me.com](mailto:sianmacqueen@me.com)

**T** 01546 510 307

## LAURA CLARK

20



### Opening Arrangements:

Fri 26th to Mon 29th Aug 10am - 5pm.

**Address:** Mill Cottage, Slockavullin  
Kilmartin, Argyll PA31 8QG

**Directions:** Slockavullin is a mile south of Kilmartin village and is tucked in behind Temple Wood Standing Stones - Mill Cottage is first on the left as you enter the village.

**W** [www.lauraclarkart.tumblr.com](http://www.lauraclarkart.tumblr.com)

**E** [l-clark@outlook.com](mailto:l-clark@outlook.com)

**T** 01546 602 231

**M** 07557 473 859

After growing up in Argyll, I studied Painting at Gray's School of Art in Aberdeen before returning to the west coast. Spatial awareness and movement are both key features in my work, and I hope to now draw on the inspiration of the landscape and environment of home to further explore and develop these themes.







Woodcut Printmaking is Rebecca's main forte, but she is also a keen Graphic Designer. With these mix of skills, her contemporary creations boast colour, character, romance, and most importantly, a good hearty sense of fun. Pink whales, shimmering stags and cakes full of fish are but a few of the quirky themes that Rebecca realises through her artwork.

**W** [www.rbarnettarts.com](http://www.rbarnettarts.com)  
[www.facebook.com/rbarnettarts](https://www.facebook.com/rbarnettarts)  
**E** [hello@rbarnettarts.com](mailto:hello@rbarnettarts.com)  
**M** 07769 586 835

**Opening Arrangements:**

Fri 26th to Mon 29th Aug 10am - 5pm.  
 Shared venue with Rob Walker.  
 Open year round by appointment.

**Address:** The Boat House Gallery,  
 Crinan Ferry Pier, Crinan Ferry,  
 by Lochgilphead, Argyll PA31 8QH

**Directions:** From Lochgilphead,  
 turn off main A816 Oban road after  
 Bridgend. From the North, pass  
 through Kilmartin, follow 'Crinan FER-  
 RY' signs and red dots! (NOT 'Crinan')  
 Beach and parking.



**Opening Arrangements:**

Fri 26th to Mon 29th Aug 10am - 5pm.  
 Joint open viewing with Rebecca  
 Barnett. Open for visitors all year  
 round, please call mobile to avoid  
 disappointment. See you soon!

**Address:** The Boat House Gallery,  
 Crinan Ferry Pier, Crinan Ferry,  
 By Lochgilphead, Argyll PA31 8QH

**Directions:** From Lochgilphead,  
 follow A816 Oban road 4 miles,  
 turn left at 'Crinan Ferry' sign, NOT  
 'Crinan'. From the North, pass through  
 Kilmartin, turn off after 3 miles at  
 'Crinan Ferry' sign. Follow red dots!  
 Beautiful white sandy beach and  
 parking available.

Rob produces a variety of contemporary compositions inspired mainly by local themes, they showcase his unique quirky interpretations of objects which relate directly to the wildlife and landscape of Argyll. Rob has won many prestigious awards since graduating from Gray's School of Art in 2007, including a Royal Scottish Academy John Kinross scholarship to further study art in Florence, Italy.

**W** [www.robwalkerartist.com](http://www.robwalkerartist.com)  
**E** [contact@robwalkerartist.com](mailto:contact@robwalkerartist.com)  
**M** 07793 011 641



## KAREN BEAUCHAMP

23



The dynamic shapes, colours and landscape in Argyll fascinate Karen, and are a constant inspiration. Working with the bold shapes of the land, trees, flowers, and plants she interprets in mixed media, her work is fresh and colourful. Trained as an architect but diversified into design, she ran her own wallpaper company for many years, she now lives, works and runs art holidays in Argyll - [www.whitehouseart.co.uk](http://www.whitehouseart.co.uk)

**W** [www.karenbeauchamp.com](http://www.karenbeauchamp.com)  
**E** [karen.beauchamp@me.com](mailto:karen.beauchamp@me.com)  
**T** 01880 730 287  
 01546 830 052  
**M** 07713 246 633

### Opening Arrangements:

Fri 26th to Mon 29th Aug 10am - 5pm.  
 Main studio open year round by appointment at Whitehouse Studio, Glenreasdale House, Whitehouse, Tarbert, Argyll. PA29 6XR

**Address:** Braeface House, Bellanoch, by Lochgilphead Argyll PA31 8SN

**Directions:** Follow the A83 north from Lochgilphead and turn left at Cairnbaan to follow the Crinan Canal towards Crinan. Do not turn left to Tayvallich but continue along the canal to the Bellanoch yacht basin, the exhibition is in the first building on the left.

24

## FRANCES MACDONALD



### Opening Arrangements:

Fri 26th to Mon 29th Aug 10am - 5pm.

**Address:** The Studio, The Crinan Hotel, Crinan by Lochgilphead Argyll PA31 8SR

**Directions:** At Lochgilphead follow the signs to A816 to Oban. After 2 miles take the left turn to Crinan through Cairnbaan on B841. Follow all signs to Crinan.

**W** [www.crinanhotel.com/fineartcrinan.html](http://www.crinanhotel.com/fineartcrinan.html)  
**E** [tommy@scottish-gallery.co.uk](mailto:tommy@scottish-gallery.co.uk)  
**T** 01546 830 261

From her studio overlooking the Corryvreckan, Macdonald looks across the Sound of Jura; to Scarba, the mountains of Mull before the great expanse of the North Atlantic. Macdonald's painting is based on her intimate understanding of the landscape around her. Her knowledge of sailing informs her of approaching weather patterns, and she captures fleeting Hebridean sunshine alongside the winter squalls with equal immediacy.



Although a landscape painter, Ross's main inspiration is the human presence in nature. He feels the history of places acutely and his series from the Auschwitz Birkenau woods explore the beauty in one of man's darkest places. His sketches from Berlin with accompanying diary entries offer insight into an artist who thrives on chance, fleeting moments and often an element of danger.

Tommy Zywn,  
The Scottish Gallery, Edinburgh.

**Opening Arrangements:**

Fri 26th to Mon 29th Aug 10am - 5pm.

**Address:**

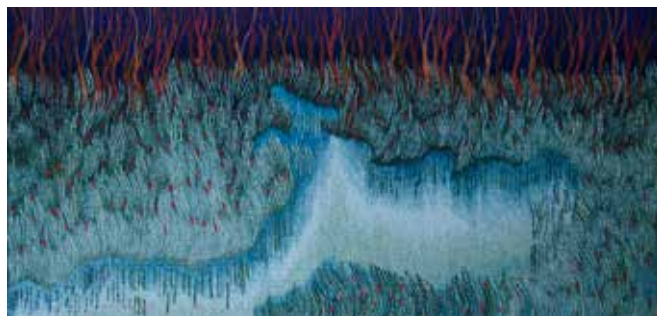
Crinan Hotel, Crinan, Argyll PA31 8SR

**Directions:** From Oban take the first right beyond the 'long walk'. From Lochgilphead take the first left beyond the signposted 'Rhudle Mill'. Follow the red dots to the cottage where limited parking is available.

**W** [www.ross-ryan.com](http://www.ross-ryan.com)

**E** [rossfloats@yahoo.co.uk](mailto:rossfloats@yahoo.co.uk)

**M** 07766 277 818

**Opening Arrangements:**

Fri 26th to Mon 29th Aug 10am - 5pm. Outwith Open studio dates the studio is open all year round by appointment or do feel free to take a chance if passing, to knock on the door where a warm welcome awaits

**Address:** East Cottage, Drimvore Kilmichael Glassary, Lochgilphead Argyll PA31 8SU

**Directions:** From Lochgilphead on A816, pass Dunadd then turn next left onto Crinan Ferry Road. East Cottage is 3rd on right. Red dots and sign Weaving studio are clear on driveway. Parking on drive by side of house.

Hand weaving takes me on journeys of delight and discovery. Time spent passing weft through warp, using my hands in a rhythmic flow adding colour and form, allows an instinctive approach to imagery.

Starting with a small drawing, I let each design emerge and its visual story unfold.

My intention is always to make tapestries which may involve intricate pattern, appear simple to read, yet provide complexity in the detail.

**W** [www.louiseoppenheimer.com](http://www.louiseoppenheimer.com)

**E** [louiseoppenheimer@gmail.com](mailto:louiseoppenheimer@gmail.com)

**T** 01546 605 323

## KERRIEN GRANT

27



Kerrien lives in Achnamara on the coast of Argyll and is inspired to paint by the wild beauty of this ever changing landscape. She enjoys experimenting with the textures and effects that she can achieve with oils in particular and uses these to give movement and light to her paintings. Her work is regularly exhibited in galleries across the West Coast.

**Opening Arrangements:**

Fri 26th to Mon 29th Aug 10am - 5pm.  
Contact by email or telephone to arrange to view work outside of Artmap exhibition times.

**Address:** Innisfree, Achnamara  
Lochgilphead PA31 8PX

**Directions:** A scenic detour from the Tayvallich road - follow signs to Achnamara (fork left at Barnluasgan Loch by the celtic cross). Travel three miles along this road to the village of Achnamara. Go through the village to the white house facing the road on the left hand side - it is the last house on the left - if you go over the bridge and reach the Village Hall you've gone too far!

**W** [www.coastwoodgallery.co.uk](http://www.coastwoodgallery.co.uk)  
**E** [kerrien@coastwoodgallery.co.uk](mailto:kerrien@coastwoodgallery.co.uk)  
**T** 01546 850 322  
**M** 07824 611 869

28

## MELANIE CHMIELEWSKA

**Opening Arrangements:**

Fri 26th to Mon 29th Aug 10am - 5pm.

**Address:** Innisfree, Achnamara  
Lochgilphead PA31 8PX

**Directions:** A scenic detour from the Tayvallich road - follow signs to Achnamara (fork left at Barnluasgan Loch by the celtic cross). Travel three miles along this road to the village of Achnamara. Go through the village to the white house facing the road on the left hand side - it is the last house on the left - if you go over the bridge and reach the Village Hall you've gone too far!

I am inspired by the wild landscape and animals of Argyll. I am intrigued by folklore and biblical stories, particularly where animals and people come together. I try to find a sense of companionship with the animals I carve. I love working in stone as it brings a meditative and timeless aspect to the sculpture. This year I will be exhibiting my work with Kerrien Grant.

**W** [www.melaniechmielewska.co.uk](http://www.melaniechmielewska.co.uk)  
**E** [remel898@btinternet.com](mailto:remel898@btinternet.com)  
**T** 01546 606 625  
**M** 07864 573 682



Kate, who signs her work 'Frin', incorporates a range of textures and techniques that make the commonplace special, from exotic silks to mundane felts. She takes inspiration from the fabric itself, Argyll land & sea-scape, pictures, photographs, and her imagination. As 'Needlesmiths', Kate is now able to share her love of design and fabrics, running creative textile skills workshops for adults and children.

**W** [www.studiobarnargyll.co.uk](http://www.studiobarnargyll.co.uk)  
**E** [needlesmiths@mail.com](mailto:needlesmiths@mail.com)  
**T** 01546 830 020  
**M** 07765 284 129

**Opening Arrangements:**

Fri 26th to Mon 29th Aug 10am - 5pm.  
 We are also open throughout the year, look out for the bunting and the OPEN sign at the bottom of the road.

**Address:** 5 Crinan Cottages, Crinan

Showing at Studio Barn & The Cabin,  
 Leac na Ban, Tayvallich PA31 8PF

**Directions:** Take the road to Tayvallich, the right hand fork at the Achnamara/Tayvallich junction. In approx ¾'s of a mile look out for the big red signs!



**Opening Arrangements:**

Fri 26th to Mon 29th Aug 10am - 5pm.

**Address:** Dunbhranaig, Tayvallich,  
 Lochgilphead, Argyll, PA31 8PN

**Directions:** I am 100yds up the Carsaig road out of Tayvallich, second opening on your left, at the brow of the hill. My studio is the garage.

**W** [www.carolinehunterart.com](http://www.carolinehunterart.com)  
**E** [mail@carolinehunterart.com](mailto:mail@carolinehunterart.com)  
**T** 01546 870 235

I grew up in Orkney, studied History of Art at Aberdeen University, then needing some fresh air, spent several years doing archaeological field work on mainland Scotland, Shetland and the Hebrides, before returning to Orkney in 1994 and beginning to paint. Lemony clouds in porcelain skies, pale grasses against leaden hills, fresh greens of early summer, roaring luminous surf at dusk in winter and mackerel, keep me reaching for my brushes.



## JANE SMITH

31



I will be selling original artwork from my book, *Wild Island*, about the wildlife of the Hebrides. I use screenprinting, and will demonstrate this technique during Open Studio Weekend. Recently I was elected a member of the Society of Wildlife Artists. This year I am also Artist in Residence for Taynish National Nature Reserve near Tayvallich.

**W** [janesmithwildlifeart.blogspot.com](http://janesmithwildlifeart.blogspot.com)  
**E** [janesmithwildlifeart@hotmail.com](mailto:janesmithwildlifeart@hotmail.com)  
**T** 01546 870 618  
**M** 07769 783 205

### Opening Arrangements:

Fri 26th to Mon 29th Aug 10am - 5pm.  
 Outwith Open Studio Weekend, visits welcome by appointment, but not at this address, so please phone beforehand.

**Address:** The Cube @ Carsaig Beach, Tayvallich, Lochgilphead PA31 8PN

**Directions:** Halfway around Tayvallich Bay, turn right at the sign for Carsaig. "The Cube" is at the beach, where there is also parking. Disabled access. Shop, coffee shop and pub nearby.

32

## CAROLINE PLUMMER



### Opening Arrangements:

Fri 26th to Mon 29th Aug 10am - 5pm.  
 Year round; by appointment.

**Address:** Kilmichael, Tayvallich, Argyll PA31 8PN

**Directions:** Rounding Tayvallich Bay turn right at "Carsaig" sign. Follow the road over a small bridge "Kilmichael" is the last house on the main road of the small cul-de-sac on your right. Parking in driveway just past tall hedge and church like sun room.

**W** [www.carolineplummer.co.uk](http://www.carolineplummer.co.uk) or [www.wytrazek.co.uk](http://www.wytrazek.co.uk)  
**E** [info@carolineplummer.co.uk](mailto:info@carolineplummer.co.uk)  
**T** 01546 870 208

Seapinks and white sandy beaches, glorious sunsets. Originally from the east coast I am constantly inspired by the dramatic colours of the rugged landscape and seascape of the west. More recently mackerel and bold flowers have found themselves in vivid still life.

## LIBBY ANDERSON

33



The inner-what is it? If not intensified sky, hurled through with birds and deep with the winds of homecoming.  
By Rainer Maria Rilke

I attempt to keep the poetry of creativity in my work. Loving to paint portrait commissions, land and sea-scapes and of course birds in flight, I work in a variety of media.

**Opening Arrangements:**

Fri 26th to Mon 29th Aug 10am - 5pm.  
Visitors welcome after hours or anytime but phone to make sure I am here.

**Address:** Carnan, Tayvallich  
Lochgilphead, Argyll PA31 8PN

**Directions:** Turn right in the middle of Tayvallich towards Carsaig. Go over the little hill then turn the 3rd right and on to the house in the corner with the steeply pitched roof.

**W** libbyandersonartist.com  
**E** libbyanderson@mac.com  
**T** 01546 870 660

34

## SUSAN BERRY



**Opening Arrangements:**

Fri 26th to Mon 29th Aug 10am - 5pm.  
Visitors welcome all year round.

**Address:** Karswick House  
Tayvallich, Lochgilphead,  
Argyll PA31 8PN.

**Directions:** Half way round Tayvallich bay, turn right at Carsaig sign. Just before the sea you will see a white house with red doors on the left. Parking in driveway. Disabled access.

**W** susanberrysite.com  
**E** otterprints@btinternet.com  
**T** 01546 870 217

Working in watercolour, I am drawn to the shore. From home I follow otters along sheltered sea lochs, scramble over rocky tidelines and trail deer through the stillness of the wood. Days later, the oily silver colour of reflected sky on a wet coat, the breaking sea patterns of mirrored land, might have led to a painting, or not. Visit my studio and gallery to see how it's going.



## SNH ART AT THE MILL

35



The art trail showcases work from Artmap Argyll artists from May to the end of September. Including Jane Smith, one of the exhibitors, who is Artist in Residence for Taynish NNR for 2016. During the open studio weekend, the Mill will be home to images from the Snapberry project, a collaboration between SNH and pupils from Lochgilphead High School where students learn to connect with nature using digital photography.

### Opening Arrangements:

There are no restrictions to visiting this exhibition.

**Address:** Scottish Natural Heritage, 1 Kilmory Estate, Lochgilphead, Argyll PA31 8RR

**Directions:** Set amongst the restored Mill at Taynish National Nature Reserve.

From Tayvallich Hall, keep left and follow the road down to Taynish NNR, park at the Mill Car Park then follow the signs along the path to the mill.

**W** [www.snh.gov.uk](http://www.snh.gov.uk)

**E** [jenny.sinclair@snh.gov.uk](mailto:jenny.sinclair@snh.gov.uk)

**T** 01546 603 611

**M** 07979 575 900

36

## SUSANNAH MACMILLAN



### Opening Arrangements:

Fri 26th to Mon 29th Aug 10am - 5pm. Year round by appointment.

**Address:** The Old Post Office, Keills, Tayvallich, Lochgilphead, Argyll PA31 8PQ

**Directions:** Pass through Tayvallich and drive south 5 miles down the Keills road. Carry straight on past the turn off to Danna. The Old Post Office is the next white cottage on the right.

**E** [susannahmacmillan@btinternet.com](mailto:susannahmacmillan@btinternet.com)

**T** 01546 870 610

I live and work on the remote Keills peninsula, inspired by the colour, light and space in the landscape. Running through the hills, forests and shoreline of Argyll, my work portrays an intimate relationship with the land through this immersion and exploration.

I graduated from the Drawing and Painting department of Glasgow School of Art in 1991.

## FIONA MACDONALD

37



Take a trip to Jura and visit my selfbuild cordwood workshop. Trained in woven textiles, I visited Peru and was inspired by their extraordinary capabilities in this field. I have lived on Jura for 35 years and like to cater for the local market. I need to be versatile so I also knit, crochet, braid, spin and dye. My products range from knitted hats to woven rugs and hangings.

**W** Facebook: Crackaig Textile Studio  
**E** fiona@jurasource.co.uk  
**T** 01496 820 313

**Opening Arrangements:**

Fri 26th to Mon 29th Aug 10am - 5pm.  
 I am normally at home, but will be away this year in May from the 17th-29th. From July - Sep on a Wednesday, the Jura crafts are in the Craighouse village hall. Please ring first to avoid disappointment.

**Address:** Crackaig Farm, Craighouse, Isle of Jura PA60 7XX

**Directions:** I live 20 minutes walk south of the village. The track to Crackaig is signposted. You will see my turf roofed building as you come down the track which is quite rough for cars, go slowly.

38

## KIRSTY BRADY

**Opening Arrangements:**

Fri 26th to Mon 29th Aug 10am - 5pm.  
 Happily by appointment outwith event.

**Address:** 1 Fernoch, Ford Kilmichael Glassary, Argyll PA31 8RL

**Directions:** Follow the A816 turn into Bridegend. Then take the turning for Kilmichael Glassary. Up past the Church and school. Continue on this road for 3 miles.

**W** www.atouchglass.co.uk  
**E** kirsty\_brady@yahoo.co.uk  
**M** 07748 836 293

Kirsty works from her garden studio. Experimenting with many aspects of glass. From small scale work to larger architectural and sculptural pieces. She is inspired by the beauty around her and by her travels. Recent work has expanded into casting. She also takes inspiration from textiles and has been experimenting with screen printing, using several layers of glass to form a complete piece.

## LESLEY BURR

39



Lesley has lived by the sea for over 21 years between Shetland and the West Coast. Her artwork has an emotional sensitivity, a connection to nature and deeper universal themes. Vibrant oils often beginning as sketches from life that are transformed in the studio to symbolic visionary landscapes.

Red Dot is a great opportunity to see studio studies to large canvases and hand painted tiles. Commissions are welcome.

**Opening Arrangements:**

Fri 26th to Mon 29th Aug 10am - 5pm.  
Visitors welcomed all year round by appointment

**Address:** 73 Argyll Street  
Lochgilphead, Argyll PA31 8NE

**Directions:** No 73 is diagonally across from the Lochgilphead post office. The house has lemon yellow window surrounds.

**W** [www.lesleyburr.co.uk](http://www.lesleyburr.co.uk)  
**E** [artistlesleyburr@gmail.com](mailto:artistlesleyburr@gmail.com)  
**T** 01546 600 267  
**M** 07917 567 268

40

## THE ARCHWAY



**Opening Arrangements:**

Fri 26th to Mon 29th Aug 10am - 5pm.

**Address:** 7 Union Street,  
Lochgilphead, Argyll PA31 8JS

**E** [info@thearchway.co.uk](mailto:info@thearchway.co.uk)  
**T** 01546 606 894

The Archway is a family run business supplying art materials, framing and showing the work of Argyll artists for over a decade. We offer a fantastic range of original art, ceramics, glass, jewellery, prints, and gifts. August sees the gallery awash with colour and energy as we host our annual Jolomo exhibition of oil paintings.

## THE DOCHAS GALLERY

41



The Dochas Centre doubles as a Gallery and Carer's Centre. We exhibit the work of the centre's founder John Paterson as well as exhibitions from local groups and artists. We run support groups and we work closely with all external agencies e.g. Alzheimer Scotland, Parkinson's Society, Macmillan Cancer Support etc. Artmap Argyll Associate Members will be showing in the Dochas Gallery during August.

**Opening Arrangements:**

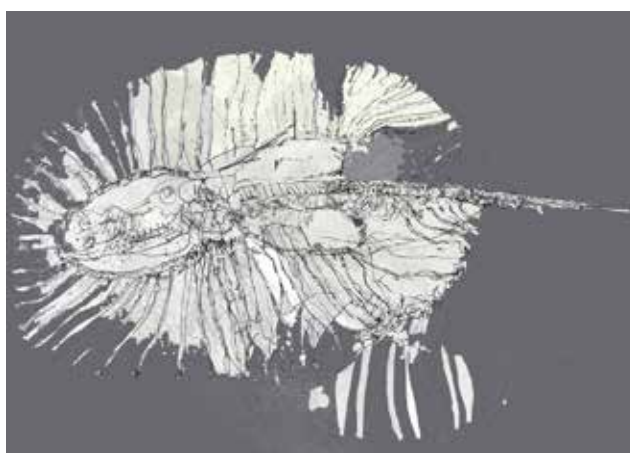
Fri 26th to Mon 29th Aug 10am - 5pm.

**Address:** 50 Campbell Street  
Lochgilphead PA31 8JU

**W** [www.dochasfund.org.uk](http://www.dochasfund.org.uk)  
**E** [enquiries@dochasfund.org.uk](mailto:enquiries@dochasfund.org.uk)  
**T** 01546 600 022

42

## JANE WALKER

**Opening Arrangements:**

Fri 26th to Mon 29th Aug 10am - 5pm.  
By appointment during the year.

**Address:** The Studio on the Brae  
Manse Brae, Stronvay, Lochgilphead  
Argyll PA31 8QZ

**Directions:** Facing the church at the north end of Argyll Street in the centre of Lochgilphead - take 2nd exit. Follow road up-hill to bend (left) in road. 3rd on the right leads you into Manse Brae (signposted). 100 yards on (shore side) is house and studio. Look for RED dots!

**E** [twalker904@btinternet.com](mailto:twalker904@btinternet.com)  
**T** 01546 603 037  
**M** 07785 524 521

Over the years I have been working with 2D in the studio making paintings, prints and drawings, but I also work outdoors building 3D structures in willow. Combining these skills keeps me attuned to nature in a physical, mental and challenging way. I enjoy working to themes through both processes. Ideas develop through observation and drawing.



## ANN THOMAS

43



Ann trained at Plymouth and Cardiff and was both a lecturer and supervisor of art. After marrying she moved to Scotland where she had a gallery for 26 years producing, displaying and selling a wide range of her work. Ann is renowned for her strong compositions, draftsmanship and use of paint to capture the ethereal quality of changing light and colour so memorable in Scotland's powerful landscapes, seas and skies.

**Opening Arrangements:**

Fri 26th to Mon 29th Aug 10am - 5pm.  
Open to visitors all year round by appointment.

**Address:** Harbour Heights, 4 The Ridge, Barmore Road, Tarbert, Argyll

**Directions:** Entering Tarbert from Lochgilphead on the A83 turn left immediately after the 30mph sign. Bear right up hill to the last but one bungalow.

**W** [www.annthomas-paintings.co.uk](http://www.annthomas-paintings.co.uk)

**E** [ann@annthomas-paintings.co.uk](mailto:ann@annthomas-paintings.co.uk)

**T** 01880 820 724

## WILMA MACKENZIE

44

**Opening Arrangements:**

Fri 26th to Mon 29th Aug 10am - 5pm.  
Monday to Saturday 10am - 5pm  
all year.

**Address:** East Most Store, Harbour Street, Tarbert, Argyll PA29 6UD

**Directions:** The workshop is located on the south side of Tarbert Harbour opposite the Fish Quay. Follow road to Cowal Ferry.

**E** [wilma.mackenzie60@yahoo.com](mailto:wilma.mackenzie60@yahoo.com)

**T** 01880 821 234

**M** 07876 212 888

Wilma is a full time glass engraver. Using either copperwheel or diamond drill, each piece is completely unique. Wilma has been engraving since 1977 (when she started as an apprentice with Edinburgh Crystal) and specialises in engraving wildlife and calligraphy-inspired designs.

## TEMPLAR ARTS & LEISURE CENTRE

45



The Templar Arts and Leisure Centre provides access to the arts and runs classes in visual art, creative technologies, crafts and music.

Since 2014 talc. has run a comprehensive arts programme with an emphasis on contemporary digital media – regularly collaborating with Artmap Argyll and young people. This year's programme includes workshops in conductive painting, kinetic sculptures, e-textiles, film & photography, graphic design, music, sound programming and light art.

**W** [www.talc.org.uk](http://www.talc.org.uk)  
**E** [info@talc.org.uk](mailto:info@talc.org.uk)  
**T** 01880 820 135

### Opening Arrangements:

Please join us during our popular drop-in sessions: every Tues, 2pm – 6:30pm and Wed, 3:30 – 6pm.

During Artmap Argyll we are open on Saturday, 27 August, 10am – 5pm for the Arts & Crafts Fair to showcase works of all arts and crafts classes based at talc. There will be a creative digital media Experimentation Day, tea & cake, spinning demonstration and works for sale.

**Address:** Templar Arts and Leisure Centre, Harbour Street, Tarbert, Argyll PA29 6UD

**Directions:** talc. is located at the beautiful harbour front in the centre of Tarbert.

46

## RICHARD KENNEDY



### Opening Arrangements:

Fri 26th to Mon 29th Aug 10am – 5pm. You can visit Richard in his gallery and studio from May until late September – 11.00am to 5.00pm. He is open Wednesday to Sunday but will be available for all of the Artmap Weekend. Along with his wood art Richard also displays a range of other Artmap artists' work. Live demonstrations available over the Artmap weekend and frequently thought out the season!

**Address:** Bole the Gallery, Fieldhouse Kilberry, Argyll PA29 6YD.

**Directions:** From Lochgilphead turn south towards Campbeltown (A83) After 4 miles turn right, signposted Kilberry (B8024).

From Tarbert travelling in either direction take the turn signposted Kilberry (B8024) Enjoy incredible views and possible sightings of Argyll's best wildlife!

Winner of 'Craft and Design' magazine's selected maker of the year wood and metal category, Richard has been creating Wood Art for several years. Each piece takes several weeks to make due to the intricate detail. Richard has made work that's displayed around the world. A member of the Register of Professional Turners, he is committed to producing some of the finest turned art available in the country today.

**W** [bolethegallery.com](http://bolethegallery.com)  
[@bolethegallery](https://facebook.com/bolethegallery)  
**E** [enquiries@bolethegallery.com](mailto:enquiries@bolethegallery.com)  
**T** 01880 770 202



## GLENBARR CAFE

47



The Café at Glenbarr Stores is delighted to be displaying work of local artists. Come and enjoy lunch or coffee and cake whilst taking the opportunity to look over the art on display. The Garden Centre is open and has a wide variety of plants available. The Store has a good selection of local meat, cheese and fish alongside everyday staples. We look forward to welcoming you soon.

**Opening Arrangements:**

Fri 26th to Mon 29th Aug 10am - 5pm.  
The cafe is open daily from 10am to 5pm.

**Address:** Zofija Sloan, Glenbarr Stores Ltd, Glenbarr, Argyll PA29 6UT

**Directions:** 30 minutes south of Tarbert on the A83 towards Campbeltown and 20 minutes north of Campbeltown.

**E** zofijasloan@outlook.com  
**T** 01583 421 200  
**M** 07881 786 680

48

## CHRISTINE RUSSEL

**Opening Arrangements:**

Fri 26th to Mon 29th Aug 10am - 5pm.  
The An Ceardach 5 acre garden is open from April to October. Visitors are very welcome during this period by appointment outside the open weekend. Tea, coffee and shortbread will be available at the open weekend with proceeds going to Campbeltown Picture House.

**Address:** An Ceardach - The Smiddy Peninver, Campbeltown, Argyll PA28 6QP

**Directions:** 3 miles north of Campbeltown, on the B842 Carradale Road pass a 40mph sign. 200 yards further on, down a steep hill, take the entrance on the right following the tarred driveway. Parking for 6 cars.

The long and winding road south on the Kintyre peninsula is one of the most scenic drives in Scotland. Views over sandy beaches or rocky shores to distant islands in wild or tranquil weather provide inspiration for Christine's paintings. There are many sculptures set amongst the huge selection of plants in the 5 acre An Ceardach garden surrounding Christine's studio.

**W** [www.wix.com/anceardach/gallery](http://www.wix.com/anceardach/gallery)  
**E** [christinedianarussell@binternet.com](mailto:christinedianarussell@binternet.com)  
**T** 01586 551 762



### Artmap needs YOU!

Artmap is Argyll's leading network of artists and we're looking for new members and friends to join us.

Our vision is to ensure that Argyll is recognised as a vibrant, creative hub. We deliver a range of events, public art installations and workshops as well as supporting artists to share ideas and grow sales.

Our annual Red Dot Studio Trail is Argyll's premier visual arts event and last year we had over 5,600 studio visits resulting in £47,000 worth of sales – providing a huge boost to the local economy.

With year on year increases in studio visitors and sales we're looking for new artists to join us so we can help you share your work to a wider audience.

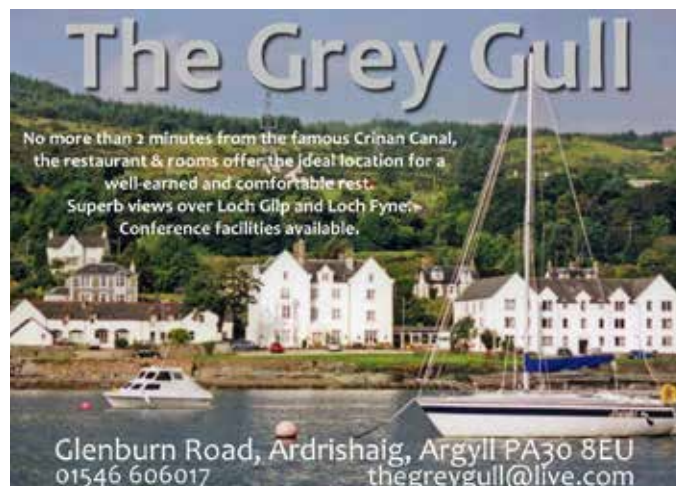
Artmap is a social enterprise company committed to returning funds raised for the benefit of Argyll's communities through cultural activities.

If you are an artist or you want to help support our work there are a three ways to get involved:

- Full member £140
- Associate member £30
- Friend £15

For full details on the benefits of joining us email for an information pack

Email: [members@artmapargyll.com](mailto:members@artmapargyll.com)






## BOOKS STATIONERY GAMES TOYS

If we don't have it in stock,  
we can order it in for you...

*Happy to help*

Local Visitor Information Point in the Bookshop



ARGYLL  
BOOK  
CENTRE

Lorne Street,  
Lochgilphead,  
Argyll PA31 8LH

Tel: 01546 603596

Email: [administrator@argyllbooks.demon.co.uk](mailto:administrator@argyllbooks.demon.co.uk)

fr: Lochgilphead Bookshop

## Cairnbaan Hotel

On the Crinan Canal



Real Ales

Real Food

Real Welcome

[www.cairnbaan.com](http://www.cairnbaan.com)

01546 603668



Don't leave Argyll without visiting

# THE SQUARE PEG

FIND SOMETHING



OFFICIAL CHARLIE BEARS STOCKIST

## GIFTS - TOYS - CARDS - SNACKS

Original and thoughtful gift ideas, toys and greetings cards. Home-baking and take-away lunches freshly prepared daily



0 1 5 4 6 - 6 0 2 4 4 5

online at: [www.whositfor.co.uk](http://www.whositfor.co.uk)

Andrew and Jilly Wilson · The Square Peg · Colchester Square · Lochgilphead

## KILMARTIN HOTEL



By Lochgilphead PA31 8RQ  
*Proprietor: Richard Pate*

A homely atmosphere in a family run hotel offering an extensive choice of wholesome fayre with traditional Scottish and seafood dishes taking pride of place.

Tel: 01546 510 250 Email: [kilmartinhotel@goolemail.com](mailto:kilmartinhotel@goolemail.com)

fyne  
wines

Purveyors of bottled art



argyll's independent drinks merchant

Lochgilphead ~ 01546 605372

[www.fynewines.co.uk](http://www.fynewines.co.uk)



**Best of the West**  
**FESTIVAL**  
**INVERARAY CASTLE**  
 10th & 11th SEPTEMBER 2016

**SATURDAY**  
**MANRAN**  
 LINDEN • CAMANS • HERRON VALLEY  
 THE LUSH PUPPIES • HURADAL

**SUNDAY**  
**SKIPINNISH**  
 THE LEAGUE OF HIGHLAND GENTLEMEN  
 DR HIP AND THE BLUES OPERATION  
 JAMES EDWYN & THE BORROWED BAND • THE FOGARTY'S

PLUS... FOOD FROM ARGYLL • WHISKY TASTING BAR • AWARD WINNING REAL ALES  
 WEST COAST CRAFTS • COOKING DEMONSTRATIONS FROM LOCAL CELEBRITY CHEFS  
 CHILDREN'S ENTERTAINMENT • AND MUCH MORE

**TICKETS ON SALE NOW**  
 EARLY BIRD TICKETS AVAILABLE UNTIL JUNE 30th  
 from Glasgow, Dumbarton, Arbroath, Dumfries & Oban. Visit [www.bowfest.co.uk](http://www.bowfest.co.uk) for full details

SCOTTISH FOOD & DRINK  
 FORTNIGHT

CEAN CAMPBELL

Caledonian MacBrayne

**FESTIVAL BUSES**



# The Jetty Gallery

Open Mon, Fri, Sat 10 – 5pm Wed, Thurs 10 – 2.30pm

Featuring an ever changing collection of original artwork by established & emerging artists - Paintings, Sculpture, Ceramics, Wood, Glass and Jewellery.

Prices ranging from small crafts at £10 – fine art up to £6,000

100, George St, Oban, Argyll PA34 5NR

Tel: 01631 570 102 [www.thejettygallery.com](http://www.thejettygallery.com)



Creative sewing & textile workshops  
 for adults and children

[www.needlesmiths.co.uk](http://www.needlesmiths.co.uk) [needlesmiths@mail.com](mailto:needlesmiths@mail.com)

we love art  
almost as much as  
we love food



**MARMALADE DELI**  
PURVEYORS OF YUMMY FOOD

11 Argyll Street, Lochgilphead, PA31 8LZ  
+44 (0)1546 606 292  
orders@marmaladedeli.com  
www.marmaladedeli.com



**CORRIE HOUSE**  
Luxury 5 Star Gold B&B

[WWW.CORRIE-HOUSE.COM](http://WWW.CORRIE-HOUSE.COM) [INFO@CORRIE-HOUSE.COM](mailto:INFO@CORRIE-HOUSE.COM)  
TEL: 01852 500779



**CORRIE COOK SCHOOL**

[WWW.CORRIE-COOKSCHOOL.COM](http://WWW.CORRIE-COOKSCHOOL.COM) [INFO@CORRIE-COOKSCHOOL.COM](mailto:INFO@CORRIE-COOKSCHOOL.COM)  
TEL: JULIE ON: 01852 500305

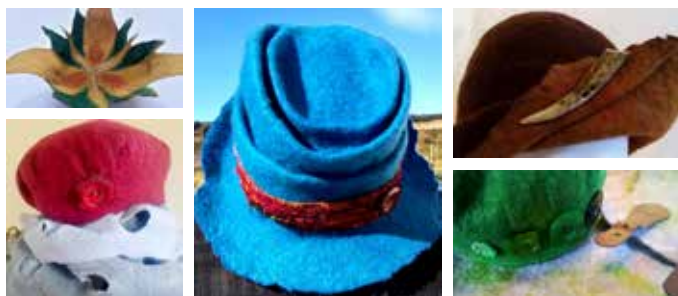


**JENNY WREN BOAT CHARTER**

[WWW.JENNYWRENBOATCHARTER.COM](http://WWW.JENNYWRENBOATCHARTER.COM) [INFO@CORRIE-HOUSE.COM](mailto:INFO@CORRIE-HOUSE.COM)  
TEL: BARRY ON 01852 500779



Bespoke decorative and wearable felt designs,  
handcrafted by Hazel Ewart-Mills.



# HAZELMADEIT

Workshops available      Commissions welcomed



m: 07974259728    e: [hazelmadeit@yahoo.co.uk](mailto:hazelmadeit@yahoo.co.uk)

[www.hazelmadeitposts.tumblr.com](http://www.hazelmadeitposts.tumblr.com)

Also find **Hazelmadeit** on Twitter, Facebook & Folksy



Now in its fourth year, this is a unique opportunity to see not only the inimitable landscape of Scotland's 'island gem' but up to 36 participating artists and makers. Paintings, sculpture, ceramics, jewellery, stained glass, wood turning, and fine furniture making.

August 12<sup>th</sup>, 13<sup>th</sup>, 14<sup>th</sup> and 15<sup>th</sup> inclusive.

Phone 01770 820373 for more details

Or visit the website... [www.arranopenstudios.com](http://www.arranopenstudios.com)

**Follow The IBAC Trail!**  
**Bute Open Studios**  
 Sat 23rd and Sun 24th July 2016

Visit our talented creatives  
 and their spaces across  
 the Isle of Bute.

Follow the yellow balloons  
 throughout the weekend to  
 discover our open studios.

For more information please visit our website  
**www.butestudiotrail.com**  
 Find us on facebook at [www.facebook.com/butestudiotrail](http://www.facebook.com/butestudiotrail)

IBAC  
 ISLE OF BUTE  
 ARTISTS' COLLECTIVE

**THE Collective**  
*Made in Cowal*

A co-operative supporting and  
 promoting artists and makers living and  
 working in the Cowal Peninsula, Argyll.

Find us at the Burgh Hall pop-up venue  
 on Argyll Street, Dunoon or online at  
[www.thecowalcollective.co.uk](http://www.thecowalcollective.co.uk)

Email: [thecowalcollective@gmail.com](mailto:thecowalcollective@gmail.com)  
 Phone: 07599723686

## ARTMAP ASSOCIATE MEMBERS 2016/17



**Andrew McCallum,**  
 Jewellery Design and Manufacture, Dalavich  
 Phone to arrange an appointment or to talk  
 about possible sales or commissions.  
 Open all year.  
 01866 844 355  
[andrew@andrewmccallumjewellery.com](mailto:andrew@andrewmccallumjewellery.com)  
[www.andrewmccallumjewellery.com](http://www.andrewmccallumjewellery.com)



**Pip Weaser,**  
 Basketry artist, Kilmelford  
 Pip makes one-off functional and sculptural  
 pieces from Argyll grown willow and other  
 plant fibres as well as recycled materials.  
 01852 200 260  
[pip.weaser@talk21.com](mailto:pip.weaser@talk21.com)



**Victoria Maxwell Macdonald,**  
 Painter, Kintyre  
 I work in oil, inspired by the land, sea, sky  
 and weather.  
[victoria.maxwell.macdonald@gmail.com](mailto:victoria.maxwell.macdonald@gmail.com)  
[www.victoriamaxwellmacdonald.co.uk](http://www.victoriamaxwellmacdonald.co.uk)



**Alan Cunningham,**  
 mixed media construction, Lochgair  
 3D wall mountable work with a maritime theme,  
 often based on historic and literary narratives.  
 07879 241 156  
[traighean@gmail.com](mailto:traighean@gmail.com)



**Karen Liversedge,**  
 Designer/Maker Textiles and Glass, Kilmelford  
 Bespoke fashion and accessories.  
 Architectural glass and sculpture to commission.  
 Workshops. Private tuition.  
 Studio open by appointment all year round.  
 01852 200 727  
[karenliversedge@hotmail.co.uk](mailto:karenliversedge@hotmail.co.uk)  
[www.karenliversedge.com](http://www.karenliversedge.com)

## ARTMAP ASSOCIATE MEMBERS 2016/17



**Hazel White,**  
Painter, Ardrishaig  
If you'd like to commission something big  
or wee, please phone me.  
07786 835058  
tillyannwhite@yahoo.co.uk



**Robyn Glendinning,**  
Illustrator, Durran  
A recent graduate from Illustration at DJCAD  
in Dundee. Enjoys watercolour painting and  
printmaking. Available for commissions.  
07768 122 539  
robnynglendinning@gmail.com  
www.robnynglendinning.com



**Sara Qualter,**  
Sara designs & styles spaces  
07876 193 083  
saraqualter@gmail.com  
www.saraqualter.co.uk



**Lucinda Hopkinson,**  
Glass Designer, Kilmichael Glen  
" I aim to to preserve molten fluidity in my fused  
glass artwork. I constantly experiment, often  
incorporating metals and encouraging bubbles. "  
01546 606 596  
lhopkinson@btconnect.com  
www.fusedglassartist.co.uk



**Jane Allan,**  
Basketmaker, Achnamara  
Traditional baskets handcrafted from  
homegrown willow in natural colours.  
Tuition, commissions and sales.  
Workshop open all year by arrangement.  
01546 850 274  
seafeld3@btinternet.com  
www.seafeldfarmcottages.co.uk

## ARTMAP ASSOCIATE MEMBERS 2016/17



**Sandi Kiehlmann,**  
Sandi works in drawing, painting, printmaking  
and specialises in textiles. She delivers  
community arts projects and runs art  
workshops.  
Rosehill, 16 Edward Street, Dunoon PA23 7JF  
T: 01369 704 009 M: 07891 614 284  
skiehlmann@aol.com  
www.sandikiehlmann.com



**Diane Thomas,**  
Green wood worker, carver and painter  
Dunans, Cairnbann.  
01546 606 059  
dthomas191@hotmail.com



**Fergus Murray,**  
Drawing, Lochgilphead  
Fergus's artwork focuses on making detailed  
drawings of pencil, pen and ink - inspired by the  
Argyll landscape, people and buildings.  
01546 600 267  
fergusmurray@btinternet.com



**Fraser MacIver,**  
Painter/Printmaker, Crinan  
See two decades of Fraser's fine Artworks at  
his unique Wagon Crinan Canal studio. Tuition by  
appointment April to October.  
Address: The Wagon Crinan Wood,  
Crinan Canal, Argyll PA31 8SW  
07795 186 698  
f.macpainter@gmail.com  
www.frasermaciver.com



**Ken Simm**  
Kenart: Paintings & Photography.  
Cromach, Ford, Lochgilphead.  
01546 810033.  
ksimmart@aol.com

## ARGYLL YOUTH ARTS

Artmap Engage is the lead visual art partner in the Argyll Youth Arts (AYA) collaboration.

AYA is funded through Creative Scotland's Time to Shine initiative and is for young people up until the age of 25 yrs. The 2016 engagement programme focuses on Immersion weekend workshops and exploring the sustainable return of Lochgilphead's lantern parade or Light Festival.

Young Artist Laura Clark is sponsored through Time to Shine to have a studio included in the 2016 Open Studio event.

Young Associate Artists Robyn Glendinning and Erin Barker are also sponsored and have their work included at the Dochas gallery exhibition.

If you require any further information please contact  
Lead Artist Sian MacQueen at [artmapargyll@gmail.com](mailto:artmapargyll@gmail.com)

[www.argyllyoutharts.org](http://www.argyllyoutharts.org)



We are indebted to and extremely grateful for the continued support from:

Argyll & Bute Council, Argyll & The Isles Ltd, Heart of Argyll Tourism Alliance, Ardrishaig Community Trust, Ardrishaig Community Council, Forestry Commission Scotland, Scottish Canals, Scottish Natural Heritage, Kilmartin Museum, Creative Scotland, Barbuie Woodland Project, Argyll Youth Arts, ACT and Pauline Cameron from Business Mentoring Scotland.

We look forward to exciting new projects in 2016/17.

Many thanks to the Dochas Fund for the use of the gallery for meetings and exhibitions and also to Scottish Canals for our regular use of the meeting room at Pier Square, Ardrishaig during the past year. We are also thankful to our volunteers, partners, spouses and families for their support throughout the year.

Disclaimer:

Please use the map and directions in conjunction with your own road maps.

Artmap Argyll accepts no liability for any loss, damage or injury sustained by any member of the public visiting any venue participating in the open studio event listed in this brochure. Visiting adults are responsible for the supervision of any children in their care. It is not permissible to take pets of any sort into the venue areas.

It is the venues' responsibility to have public liability cover. Whilst every effort is made by artists to ensure that the venues are as safe as possible, visitors should be aware that the studios are working environments and can be dangerous places. Great care must be exercised when visiting as there may be hazardous substances and/or tools and powerful machinery.

Please treat all venues with respect and remember many of the artists work from home.

Contact:  
[admin@artmapargyll.com](mailto:admin@artmapargyll.com)

Follow us on facebook & twitter:  
[facebook.com/artmap](https://facebook.com/artmap)  
[twitter.com/artmapArgyll](https://twitter.com/artmapArgyll)