



Artmap Argyll

10th Annual Open Studios
25th - 28th August 2017
10am - 5pm

This year Artmap Argyll artists invite you to join their 10th birthday celebrations. Visitors to Open Studios will see an amazing range of art and craft inspired by the unique character of Argyll's landscape, people and rich cultural heritage.

Look out for special celebratory events and exhibitions throughout the year.

Visit us at artmapargyll.co.uk

A R T

M A P

STUDIO DIRECTORY 10

N O W

T E N

Artists & Venues

01	Port Appin Studio	25	Louise Oppenheimer
02	Crubag – Jessica Gianotti	26	David Whyman
03	Fiona MacRae	27	Kate MacDonald
04	Carol Olsen	28	Caroline Hunter
05	Lucy Gray	29	Jane Smith
06	Ewen Munro	30	Caroline Plummer
07	Karen Liversedge	31	Libby Anderson
08	Kerrien Grant	32	Susan Berry
09	Loch Melfort Hotel & Arduaine Garden	33	SNH Art at the Mill
10	Tara Coggans	34	Kirsty Brady
11	Inge Bos	35	Chris Buncall
12	Arthur Ker	36	Mary Redmond
13	Margaret Ker	37	The Archway
14	David Bracken	38	Dochas Gallery & Carers' Centre
15	Kilmartin Museum	39	Jane Walker
16	Bill Baillie	40	Laura Clark
17	Eno Dekka	41	Melanie Chmielewska
18	Sian MacQueen RSW	42	Janice Bracey
19	Rebecca Barnett	43	Auchindrain
20	Rob Walker	44	Wilma MacKenzie
21	Karen Beauchamp	45	Ann Thomas
22	Fraser MacIver	46	Richard Kennedy
23	Frances Macdonald	47	Christine Russell
24	Ross Ryan	48	Scottish Sculpture Park
		49	Michaela Goan

Please note: Many artists do not have card facilities should you wish to make a purchase. Some have online payment options while some can only receive cheques or cash.

10th Annual Open Studios

25th - 28th Aug 2017 10am - 5pm

Artmap Argyll's annual four day Open Studios event over the last weekend in August is known as the red dot trail and visitors are guided to artists' studios by a network of numbered red dots and direction arrows. From Appin in the north to Campbeltown in the south a warm welcome is extended to art lovers at 50 artists' studios and venues

The four day event is an opportunity to visit artists' studios without any pressure to buy work – although if you do fall in love with a piece, then you have the joy of meeting the artist and seeing how the work is made. In many studios there are opportunities to try out the techniques or crafts the artist employs and to browse their sketchbooks to see how they develop their ideas.

We hope you enjoy Argyll's cultural diversity and to say thank you for visiting the Open Studio event we are offering a prize draw of £200 to spend in the studio of your choice. To enter just pick up a red dot sticker available in every studio and collect 8 or more for your chance to win.

This year is Artmap's 10th birthday and special celebratory events are being organised throughout the year and we will be offering workshops at many festivals and events. Visit our website and facebook pages for regular updates on what is happening and keep this brochure for further reference because most studios can be visited all year round by appointment. Throughout the summer and over the Open Studios weekend, Artmap artists and invited guests will showcase their environmental work through an Art Trail at Taynish NNR in partnership with SNH.

www.artmapargyll.co.uk



To celebrate Artmap Argyll's 10th anniversary here is a review of our 10 brochure covers with quotes from artists who joined us in those years.



Before Artmap we had no idea how many artists and makers were working away in studios across Argyll and especially no idea of the number of amazing visitors keen to come and find out all about us. For me, Artmap is about connecting to those around me and sharing the creative journey with all its highlights and pitfalls.

2008 Sian MacQueen

A way of connecting with other artists and sharing thoughts in and out of the studio, I really enjoy being part of this diverse group.

The studio event is a huge effort of preparation but always worthwhile. It is important to see your work in a fresh light and receive such good feedback from visitors near and far.

2009 Libby Anderson



Great new friends, inspiring images, innovative ideas, all firmly Argyll style.

2010 George John Stewart

...Frenzied, engaging and rewarding ...

2011 Fiona Macrae



Made good friends - lots of art - new skills and had a great time.

2012 Karen Beauchamp

The support, advice and encouragement of Artmap Members has been a key part of my journey as I have developed my painting style and technique, moving from acrylics to oils. Open Studios provides me with an opportunity to exhibit my work, meet customers and gain valuable feedback, which helps me to hone my work as I go forward. I love being part of the art scene in Argyll – collectively we have a great deal to offer!

2013 Kerrien Grant



It was fantastic to be welcomed as a member of Artmap. It gave me encouragement to open my studio to the public and has provided me with so many opportunities to connect with the cultural and community benefits that artists bring to Argyll.

2014 Margaret Ker

Being part of Artmap Argyll has given me the opportunity to share my creativity and photographic expression with others.

2015 Ewen Munro



Artmap's given me the opportunity to show my artwork locally and my artwork locally that I would have otherwise found difficult to do; it's an excellent chance for artists to showcase their work, and it opens direct feedback and comments from visitors - likewise, it gives visitors the opportunity to ask questions and talk about the artwork. It's a great experience that brings together artists in Argyll, and I look forward to seeing where it will take me in the future.

2016 Laura Clark

As a recent member of Artmap I am keen to have this opportunity to show my artistic development to a thriving membership. ARTMAP has given me the opportunity to start taking my artistic endeavours seriously by providing an exciting outlet in exhibition, print and digital formats, whilst enabling me to grow artistically in the place that I love (Argyll).

2017 Chris Buncall



PORT APPIN STUDIO

1



Port Appin Studio is the workplace of Alex Gourlay (painter/designer) and his wife Midge Gourlay (textile artist), graduates of Glasgow School of Art. Visit the studio to meet the artists and see work in progress. Paintings, prints and textile artworks are available for sale at the studio, by appointment, phone or e-mail, or via our website online shop where our range of work can be viewed. Commissions welcomed.

Opening Arrangements:

Fri 25th to Mon 28th Aug
Daily, 11.00 - 16.00h.
At other times: by appointment.

Address: The Studio, The Pier,
Port Appin, Argyll PA38 4DN

Directions: Off the A828 north of
Oban, follow the signs into Port Appin.
The studio is next to the carpark at the
end of the road by the ferry.

W www.portappinstudio.co.uk

T 01631 730 594

2

CRÙBAG - JESSICA GIANNOTTI

**Opening Arrangements:**

Fri 25th to Mon 28th Aug 10am - 5pm.
Surrounded by ocean and marvellous
scenery, Crùbag's studio is based at
the Old Teaching Lab at The Scottish
Association for Marine Science
(SAMS). The perfect setting for our
SciArt work and for creation. Visitors
are welcome by appointment and our
collections are always available for
viewing and for purchase at the Ocean
Explorer Centre (OEC) at the Scottish
Marine Institute (opposite to our
studio). Please follow us on social
media as well. Facebook: @Crubag;
Twitter: @crubag and
Instagram: crubagofficial.

Address: Crùbag, Scottish Marine
Institute, Oban, Argyll PA37 1QA

Directions: We are in Dunbeg near
Oban - On A85 follow signs; for SAT
NAV: PA37 1QA; by bus 405/005
Oban to Dunbeg. We are next to
Dunstaffnage Castle and SAMS.

Jessica launched Crùbag to
embrace her love for the oceans,
marine science and the arts.
Our textile collections are
inspired the hidden beauty of the
oceans and by our collaborations
with scientists. Each piece tells a
story about the sea, research and
current environmental issues.
Using software, photography,
microscopy imaging, illustrations,
artistic interpretations, a visually
striking collection emerges, with
bold representations, repetition
patterns, textures, abstracts and
unexpected subject depictions.

W www.crubag.co.uk
E jessica@crubag.co.uk
T 01631 559 282
M 07769 636 478



Fiona's paintings are becoming less about fish, lemons and pots and more to do with colour, form and space, with an apparent simplicity of construction. Although they are still life paintings their roots are in the natural environment. Spring greens, summer blues, autumn hues and winter days. This year being the 10th anniversary of Art Map, I am going to have a retrospective show of my paintings for sale.

Opening Arrangements:

Fri 25th to Mon 28th Aug 10am - 5pm.
By appointment throughout the year.

Address: Achnahannait, Glen Lonan,
Taynuilt, Argyll PA35 1HY

Directions: Turn off beside the
Taynuilt Hotel, Glen Lonan road,
approx 1 Mile.

W Facebook ; fiona macrae artist

E feefo@fionamacrae.com

T 01866 822 224

M 07743 378 671



Opening Arrangements:

Fri 25th to Mon 28th Aug 10am - 5pm.

Address: Ardchuan, Glen Lonan,
Taynuilt, Argyll PA35 1HY

Directions: From the A85 take the
Glen Lonan road from the village of
Taynuilt in a southerly direction for
0.8 of a mile. I am on the right, before
Airdeny Chalets. The Sat Nav is
accurate for this address.

W www.carolodesign.com

E vibrantsilks@googlemail.com

T 01866 822 580

M 07762 205 313

This year I am developing the gutta and wax effects of painting on silk. New methods of surface design are being experimented with. The production of silk scarves and paintings being the focus.

Jewellery – Is taking a metamorphosis and changing the style of the finished product. A more organic and less controlled image is emerging. New lines are under development.

Trained at Sir John Cass School of Art, London.

LUCY GRAY

5



Lucy Gray completed a Fine Art Sculpture Degree at Central School of Art where she achieved a 1st class Honours Degree. Following a print making Diploma she began her training in the restoration of lacquered and gilded surfaces. The influences of her continued work in this field can frequently be found in her sculpture.

"In my work I translate an idea through natural forms, capturing the tipping point, the metamorphosis".

Opening Arrangements:

Fri 25th to Mon 28th Aug 10am - 5pm.

Address: Airds Bay House, Taynuilt
Argyll PA35 1JR

Directions: From Oban, Take the A85 towards Connel. Continue through Connel. Just as you enter the 30mph zone for Taynuilt, turn left (signpost, Airds Bay). Take the first left, (stone gate posts, open gate). When you come to the fork, where you will be able to see the house, keep left.

E graylucy@live.co.uk
T 01866 822 286
M 07934 421 784

6

EWEN MUNRO



Opening Arrangements:

Fri 25th to Mon 28th Aug 10am - 5pm.

Address: Airds Bay House, Taynuilt
Argyll PA35 1JR

Directions: From Oban, Take the A85 north, continuing through Connel towards Taynuilt. Almost immediately as you enter the 30mph zone for Taynuilt, turn left (sign post, Airds Bay). Continue down this single track road then taking the first left (stone gate posts, open gate). You will come to a fork in the lane where you will see the Airds Bay House. Please keep left.

W www.ewenmunrophotography.com
E info@ewenmunrophotography.com
T 01631 569 632
M 07795 604 455

Ewen's passion for photography began whilst studying woven textile design in the early 80's. His enthusiasm for creating images has developed from a close interest in the unique Lorn light, colour and reflections alongside textures of waterside rust and decay.

Since moving to awesome Argyll in 2004, a growing interest in digital photography as a creative tool has enabled Ewen to discover new possibilities for his inspired photographic imagery.

KAREN LIVERSEEDGE

7



Light and colour, space and movement, texture and pattern are central to my work in fashion, accessories and sculptural glass. Specialities include bespoke commissions as well as teaching total beginners to master class level.

This year I will be exhibiting my work at Loch Melfort Hotel where I will be demonstrating how to create mood and story boards. See the website for demonstration times during the weekend.

Opening Arrangements:

Fri 25th to Mon 28th Aug 10am - 5pm.

At other times of the year, please email me to arrange a visit at my studio by the shores of Loch Melfort.

Old smithy Studio, Ravenswood, Kilmelford, Argyll PA34 4XD

Address: Loch Melfort Hotel
Arduaine, Argyll, PA34 4XG

Directions: On the A816, 18 miles south of Oban and 18 miles north of Lochilphed.

W www.karenliversedge.com
E karenliversedge@hotmail.co.uk
T 01852 200 727
M 07799 350 039

KERRIEN GRANT

8

**Opening Arrangements:**

Fri 25th to Mon 28th Aug 10am - 5pm.

I am not able to open my studio this year as I will be in the process of moving! I am however delighted to be exhibiting at Loch Melfort Hotel during the Artmap Argyll Open Studios event, so do go along to see my work there. Alternatively, contact me by email to arrange to view work at another time. kerrien@coastwoodgallery.co.uk

Address: Loch Melfort Hotel,
Arduaine, Oban, Argyll. PA34 4XG

Directions: On the A816, 18 miles South of Oban and 18 miles North of Lochilphed.

Kerrien lives in Achnamara on the coast of Argyll and is inspired to paint by the wild beauty of this ever changing landscape. She enjoys experimenting with the textures and effects that she can achieve with oils in particular and uses these to give movement and light to her paintings. Her work is regularly exhibited in galleries across the West Coast.

W www.coastwoodgallery.co.uk
E kerrien@coastwoodgallery.co.uk
T 01546 850 322
M 07824 611 869

LOCH MELFORT HOTEL & ARDUAINA GARDENS

9



Stunningly located - the views are a picture worth taking! Various artists will be exhibiting in the hotel and garden.

Opening Arrangements:

Open every day 9.30am - dusk.
Entrance to the garden - 50% off
NTS entrance fee during Open Studio weekend. Entrance to hotel via main reception doors. Meals, drinks and light refreshments all day.

Address: Arduaine, Argyll, Oban
PA34 4XG

Directions: A816 18 miles south of Oban, 18 miles North of Lochgilphead.

W www.lochmelfort.co.uk
E reception@lochmelfort.co.uk
T 01852 200 233

TARA COGGANS

10



Opening Arrangements:

Fri 25th to Mon 28th Aug 10am - 5pm.
Outwith Open Studio weekend - year round, by appointment.

Address: Lunga Heights,
Craobh Haven, Lochgilphead,
PA31 8UU

Directions: On the A816 Oban to Lochgilphead road take the Craobh Haven turn off (approx. 2 miles south of the Arduaine Gardens/Loch Melfort Hotel turn off). Follow the signs for Lunga House and the Red dots! Park at bottom of the hill and walk up. There are 2 parking spaces at the house though please leave these available for visitors with mobility difficulties.
During the Open Weekend Tea, Coffee and Canapés will be available to refresh you on arrival, courtesy of Argyll Hog Roasts.

Growing up in the shadow of Crookston Castle in Glasgow set Tara on her path into the past. 2008 saw her relocate to Argyll drawn by a landscape so visibly woven with our heritage. Tara responds to this through use of versatile and very tactile materials.

Having always enjoyed inspiring others' creativity Tara ran her first workshop aged 11 and has led art and heritage craft workshops regularly ever since.

W www.taracoggans.com
E taracoggans@gmail.com
T 01852 500 206



Inge works on paper and wooden panels, her works emerging from structure, intentionally, sometimes dictated by the wood's grain. Her work focuses on presence, an environment-specific here and now. She makes photographs of landscapes, that she might identify structures in the interplay of dark and light. Structures invoke presence. Presence defines structure. Together they inhabit the moment, invoke memories - this experience sets the image in motion and alters reality.

Opening Arrangements:

Fri 25th to Mon 28th Aug 10am - 5pm.

Address: Ford House, Ford,
PA31 8RH

Directions: From A816 turn on to the
B840 to Ford. Ford House is in the
centre of the village.

W www.ingebos.com
E inge@ingebos.com
T 01546 810 273



Address: Caorann, Ford,
Argyll & Bute PA31 8RH

Directions: Follow A816 through
Kilmartin towards Oban for 1 mile.
Turn right on to B840 to Ford. After
Ford, continue towards Dalavich for 1
mile. Caorann is on the left overlooking
Torrán Bay on Loch Awe. I'm in the
garage studio.

W www.arthurker.com
E kerarthur@aol.com
T 01546 810 375
M 07540 300 239

Working in a range of media in my landscape paintings, I try to capture the colours and moods of the changing seasons. This year I will also be showing seascapes developed from sketches made on a recent trip down under where I became fascinated by the amazing cliffs and the immense power of the pounding surf.

Opening Arrangements:

Fri 25th to Mon 28th Aug 10am - 5pm.
All year by appointment.

MARGARET KER

13



The landscape, the geology and the pre-history of Argyll are the inspiration for my work. Fascinated by the incredible beauty of the dark skies I often incorporate images of constellations in my mosaics and silver jewellery. I employ an experimental approach to expressing my ideas and I enjoy using a broad range of media. I regularly work to commission.

Opening Arrangements:

Fri 25th to Mon 28th Aug 10am - 5pm.
All year by appointment.

Address: Caorann, Ford, Torran
Argyll. PA31 8RH

Directions: Follow A816 through
Kilmartin towards Oban for 1 mile.
Turn right on to B840 to Ford.
After Ford continue towards
Dalavich for 1 mile.
Caorann is on the left overlooking
Torran Bay on Loch Awe.

W www.margaretker.com
E kermargaret@aol.com
T 01546 810 375
M 07889 966 585

14

DAVID BRACKEN

**Opening Arrangements:**

Fri 25th to Mon 28th Aug 11am - 5pm.

Address: The Old Manse, Kilmartin
Lochgilphead, PA31 8RQ

Directions: Entering Kilmartin from
the North The Old Manse is the fifth
building on the left.
Entering Kilmartin from the South
drive past the museum and down the
hill. The Old Manse is 100 metres past
the Kilmartin Garage and on the right.

W www.turning.me.uk
E david@turning.me.uk
T 01546 510 202

David uses the natural form of wood in everyday objects, using native woods that are mainly windfall or removed due to disease or for safety reasons. He takes on commissions and develops bespoke works as well as progressing his own ideas. He also teaches woodturning. His work bridges a craft to an artform by using the natural beauty of wood which is enhanced by colour, texture, and/or piercing.

KILMARTIN HOUSE MUSEUM

15



Kilmartin Museum is a renowned centre for archaeology and landscape interpretation. Our shop offers many goods from local craftspeople and the walls of our café are adorned with vibrant works of art created by local artists, many inspired by the unique atmosphere of Kilmartin Glen. During 2017 we are planning a number of different exhibitions - full details available from our website.

Opening Arrangements:

Open 10am to 5.30pm every day.

Address: Kilmartin Museum,
Kilmartin, Lochgilphead PA31 8RQ

Directions: From Lochgilphead follow the A816 signposted Oban. After approximately 8 miles you will enter the village of Kilmartin and the Museum car park can be found on the left. From Oban follow the A816 signposted Lochgilphead. Kilmartin is approximately 30 miles south of Oban and the Museum car park is on the right about 1 mile after entering Kilmartin.

W www.kilmartin.org
E admin@kilmartin.org
T 01546 510 278

BILL BAILLIE

16

**Opening Arrangements:**

Fri 25th to Mon 28th Aug 10am - 5pm.

Address: The Mill, Slockavullin,
Kilmartin, Lochgilphead,
Argyll PA31 8QG

W www.rainycloudimages.com
E billbaillie@rainycloudimages.com
T 01546 510 359

Bill's father gave him a hefty Zenith camera for his eighth birthday and he's been taking photos ever since. He discovered Argyll when he was just 12 and even at that early age knew that one day he would live here. He divides his time between his two passions: photographing the Argyll landscape and bringing up his family.

ENO DEKA

17



...got drunk...fell over.... fell
in love...more blackouts than
normal thoughts...still drunk...
happy drunk...drunk drunk...found
god....fell over a lot again...gave
up stella god for whisky god...
visited new planets....
photographed them....got stoned...
got jobs...gave it all up...fell out of
love... woke up in love again for
the first time...breathed air that
made me feel sick with the love
i felt...

W www.heidroom.com
E eno_deka@hotmail.com
T 01546 510 310

Opening Arrangements:

Fri 25th to Mon 28th Aug 10am - 5pm.

Address: Smiddy House
Slockavullin, Kilmartin,
Argyll PA31 8QG

Directions: Slockavullin is a mile
south of Kilmartin village and is tucked
in behind Temple Wood Standing
Stones - Turn off the A816 at Balu-
achaig, take the 1st right at the bridge.
Follow the road until you see the sign
for Slockavullin continue through the
village turning left onto the gravel
drive before the Village green and the
bridge over the burn. Follow the drive
to the very top. I will be sharing the
studio with Sian MacQueen.

18

SIAN MACQUEEN RSW

**Address:**

Mill Cottage, Slockavullin, Kilmartin
Argyll PA31 8QG

Directions: Slockavullin is a mile
south of Kilmartin village and is tucked
in behind Temple Wood Standing
Stones - my year round studio at Mill
Cottage is first on the left as you enter
the village.

**For the 2017 Open Studios I will
be sharing a space at my first ever
Artmap location - Smiddy House
Slockavullin. Sharing with Eno Deka,
follow the directions to Slockavullin
and continue through the village turn-
ing left onto the gravel drive before the
Village green. Follow the drive to the
very top and look out for red dot signs
of course!**

An elected member of the RSW,
Sian trained at Glasgow School
of Art.

"Argyll - the colour, texture and
light, I use as both subject and
setting for my uniquely layered
work.

My paintings and sculptures
evolve as I work. At the start of
the process I have no idea what
imagery they will contain, places
and objects emerge from my
memory and imagination as I go."

Opening Arrangements:

Fri 25th to Mon 28th Aug 10am - 5pm.
Year round by appointment.

W www.sianmacqueen.com
E sianmacqueen@me.com
T 01546 510 307



Woodcut Printmaking is Rebecca's main forte, but she is also a keen Graphic Designer. With these mix of skills, her contemporary creations boast colour, character, romance, and most importantly, a good hearty sense of fun. Pink whales, shimmering stags and cakes full of fish are but a few of the quirky themes that Rebecca realises through her artwork.

W www.rbarnettarts.com
 www.facebook.com/rbarnettarts
E hello@rbarnettarts.com
M 07769 586 835

Opening Arrangements:

Fri 25th to Mon 28th Aug 10am - 5pm.
 Shared venue with Rob Walker.
 Open year round by appointment.

Address: The Boat House Gallery,
 Crinan Ferry Pier, Crinan Ferry,
 by Lochgilphead, Argyll PA31 8QH

Directions: From Lochgilphead,
 turn off main A816 Oban road after
 Bridgend. From the North, pass
 through Kilmartin, follow 'Crinan FER-
 RY' signs and red dots! (NOT 'Crinan')
 Beach and parking.



Opening Arrangements:

Fri 25th to Mon 28th Aug 10am - 5pm.
 Joint open viewing with Rebecca
 Barnett. Open for visitors all year
 round, please call mobile to avoid
 disappointment. See you soon!

Address: The Boat House Gallery,
 Crinan Ferry Pier, Crinan Ferry,
 By Lochgilphead, Argyll PA31 8QH

Directions: From Lochgilphead,
 follow A816 Oban road 4 miles,
 turn left at 'Crinan Ferry' sign, NOT
 'Crinan'. From the North, pass through
 Kilmartin, turn off after 3 miles at
 'Crinan Ferry' sign. Follow red dots!
 Beautiful white sandy beach and
 parking available.

Rob produces a variety of contemporary compositions inspired mainly by local themes, they showcase his unique quirky interpretations of objects which relate directly to the wildlife and landscape of Argyll. Rob has won many prestigious awards since graduating from Gray's School of Art in 2007, including a Royal Scottish Academy John Kinross scholarship to further study art in Florence, Italy.

W www.robwalkerartist.com
E contact@robwalkerartist.com
M 07793 011 841



The dynamic shapes, colours and landscape in Argyll fascinate Karen, and are a constant inspiration. Working with the bold shapes of the land, trees, flowers, and plants she interprets in mixed media, her work is fresh and colourful.

Trained as an architect but diversified into design, she ran her own wallpaper company for many years, she now lives, works and runs art holidays in Argyll - www.whitehouseart.co.uk

W www.karenbeauchamp.com
E karen.beauchamp@me.com
T 01880 730 287
 01546 830 052
M 07713 246 633

Opening Arrangements:

Fri 25th to Mon 28th Aug 10am - 5pm.
 Main studio open year round by appointment at Whitehouse Studio, Glenreisdale House, Whitehouse, Tarbert, Argyll. PA29 6XR

Address: Braeface House, Bellanoch, by Lochgilphead Argyll PA31 8SN

Directions: Follow the A83 north from Lochgilphead and turn left at Cairnbaan to follow the Crinan Canal towards Crinan. Do not turn left to Tayvallich but continue along the canal to the Bellanoch yacht basin, the exhibition is in the first building on the left.



Opening Arrangements:

10am to 5pm during Open Studio weekend. Visitors Welcome by appointment most of year, (approx late March to mid November). Best to phone in advance to verify my availability. Art Tuition offered by prior arrangement from late April to Mid October. Please phone for detailed info-tailored to your needs. Preferably no dogs thanks- (unless leashed, tame and quiet).

Address: The Wagon Crinan Wood, Crinan Canal Argyll PA31 8SW

Directions: 15 minute walk from Crinan hotel along towpath to cross Crinan Bridge, turn left walk 200 yards to The Wagon. Cars take 'No through road' exit off B841 to Crinan Bridge.

As 2017 marks the tenth anniversary of Artmap Argyll, It's also my twentieth anniversary of life devoted to Art in my Wagon Home Studio on Crinan Canal. In this off grid woodland idyll, I produce paintings in a broad range of subject & media, plus copperplate etchings on my Wagon Press.

View my new limited edition prints at Sotegallery.biz :
 Or phone to commission, visit, or study.

W www.sotegallery.biz/fraser-maciver.html
E f.macpainter@gmail.com
T 07795 186 698



From her studio overlooking the Corryvreckan, Macdonald looks across the Sound of Jura; to Scarba, the mountains of Mull before the great expanse of the North Atlantic. Macdonald's painting is based on her intimate understanding of the landscape around her. Her knowledge of approaching weather patterns, and she captures fleeting Hebridean sunshine alongside the winter squalls with equal immediacy.

Opening Arrangements:

Fri 25th to Mon 28th Aug 10am - 5pm.

Address: The Studio, The Crinan Hotel, Crinan by Lochgilphead Argyll, PA31 8SR

Directions: At Lochgilphead follow the signs to A8 16 to Oban. After 2 miles take the left turn to Crinan through Cairnbaan on B841. Follow all signs to Crinan.

W www.crinanhotel.com/fineartcrinan.html
E tommy@scottish-gallery.co.uk
M +44 (0)1546 830 261



Opening Arrangements:

Fri 25th to Mon 28th Aug 10am - 5pm.

Address:

Crinan Hotel, Crinan, Argyll PA31 8SR

Directions: From Oban take the first right beyond the 'long walk'. From Lochgilphead take the first left beyond the signposted 'Rhudle Mill'. Follow the red dots to the cottage where limited parking is available.

W www.ross-ryan.com
E rossfloats@yahoo.co.uk
M 07766 277 818

Although a landscape painter, Ross's main inspiration is the human presence in nature. He feels the history of places acutely and his series from the Auschwitz Birkenau woods explore the beauty in one of man's darkest places. His sketches from Berlin with accompanying diary entries offer insight into an artist who thrives on chance, fleeting moments and often an element of danger.

Tommy Zyw,
The Scottish Gallery, Edinburgh.

LOUISE OPPENHEIMER

25



The slow medium of hand weaving allows for an intuitive approach to imagery within a formulaic discipline. While I enjoy the rhythmic sense of building an image with warp and weft, my aim is to celebrate the natural world in texture and warmth. Using my line drawings for occasional reference I let imagination and instinct lead the way in blended colour, shape and design.

W www.louiseoppenheimer.com
E louiseoppenheimer@gmail.com
T 01546 605 323

Opening Arrangements:

Fri 25th to Mon 28th Aug 10am - 5pm.
 Outwith Open studio dates the studio is open all year round by appointment or do feel free to take a chance if passing, to knock on the door where a warm welcome awaits

Address: East Cottage, Drimvore
 Kilmichael Glassary, Lochgilphead
 Argyll PA31 8SU

Directions: From Lochgilphead on A816, pass Dunadd then turn next left onto Crinan Ferry Road. East Cottage is 3rd on right. Red dots and sign Weaving studio are clear on driveway. Parking on drive by side of house.

DAVID WHYMAN

26

**Opening Arrangements:**

Opening times each day from the
 25th August -to -28th August
 10am - 5pm in Achnamara Village Hall

Address: Achnamara, by
 Lochgilphead, Argyll. PA31 8PU
 Open days in Achnamara village Hall

Directions: POST CODE FOR YOUR
 SAT-NAV PA31 8PU
 From Lochgilphead to Achnamara
 Village Hall, follow the road to Oban
 (A816) for 2 miles, take the left fork
 through Cairnbaan crossing the bridge
 over the canal, continue on this road
 for 3 miles until you see left turn for
 Tayvallich -take this road (B8025) for
 1 mile then take the fork to the left for
 Achnamara by the War Memorial - this
 road (single track with passing points)
 will take you to Achnamara -drive
 through the village and the village Hall
 is on the left at the end of the village.

David has an international reputation as a glass engraver with pieces in collections worldwide. He has always had a fascination with all wildlife, this subject matter is reflected in his work, although many other subjects are also engraved as a client requires. 'He relocated to Mid Argyll in 2016 where he is inspired to engrave his favourite subjects - the amazing diversity of wildlife in this wonderful area.

W www.davidwhymancrystal.co.uk
E davidwhyman@hotmail.co.uk
T 01546 850 325



From Landscapes to Lampshades Kate incorporates a wide range of textures and techniques into her textile artwork. Her work varies from the whimsical to the atmospheric, from felt to paint, getting inspiration from Argyll's land & seascape, photographs, and her imagination. Kate runs creative textile skills workshops for adults and children as 'Needlesmiths'. This year, for the first time, Kate has two collaborative pieces in the Tainish Art Trail.

W www.studiobarnargyll.co.uk
E needlesmiths@mail.com
T 01546 830 020
M 07765 284 129

Opening Arrangements:

Fri 25th to Mon 28th Aug 10am - 5pm.
 We are also open throughout the year, look out for the bunting and the OPEN sign at the bottom of the road.

Address: Studio Barn Argyll
 Leac na Ban, Tayvallich PA31 8PF

Directions: Take the road to Tayvallich, the right-hand fork at the Achnamara/Tayvallich junction. In apx 3/4's of a mile look out for the big red signs & bunting!
 Turn right and drive up the hill (it is a bumpy track but worth the trip) not only is there a splendid view of artwork, but the view of the landscape is pretty spectacular too.



Opening Arrangements:

Fri 25th to Mon 28th Aug 10am - 5pm..

Address: Dunbhronaig, Tayvallich,
 Lochgilphead, Argyll, PA31 8PN

Directions: I am 100yds up the Carsaig road out of Tayvallich, second opening on your left, at the brow of the hill. My studio is the garage.

W www.carolinehunterart.com
E mail@carolinehunterart.com
T 01546 870 235

I grew up in Orkney, studied History of Art at Aberdeen University, then needing some fresh air, spent several years doing archaeological field work on mainland Scotland, Shetland and the Hebrides, before returning to Orkney in 1994 and beginning to paint. Lemony clouds in porcelain skies, pale grasses against leaden hills, fresh greens of early summer, roaring luminous surf at dusk in winter and mackerel, keep me reaching for my brushes.



This year I have been Artist in Residence for Taynish National Nature Reserve near Tayvallich. I use screenprinting, and will demonstrate this technique during Open Studio Weekend. I will also be selling original artwork from my book, *Wild Island*, about the wildlife of the Hebrides. I am a member of the Society of Wildlife Artists and exhibit annually with them in London.

W janesmithwildlifeart.blogspot.com
E janesmithwildlifeart@hotmail.com
T 01546 870 618
M 07769 783 205

Opening Arrangements:

Fri 25th to Mon 28th Aug 10am - 5pm.
 Outwith Open Studio Weekend, visits welcome by appointment, but not at this address, so please phone beforehand.

Address: The Cube @ Carsaig Beach, Tayvallich, Lochgilphead PA31 8PN

Directions: Halfway around Tayvallich Bay, turn right at the sign for Carsaig. "The Cube" is at the beach, where there is also parking. Disabled access. Shop, coffee shop and pub nearby.



Opening Arrangements:

Fri 25th to Mon 28th Aug 10am - 5pm.
 Outwith Open Studio Event; year round by appointment.

Address: Kilmichael, Tayvallich, Argyll PA31 8PN

Directions: Rounding Tayvallich Bay turn right at "Carsaig" sign. Follow the road over a small bridge "Kilmichael" is the last house on the main road of the small cul-de-sac on your right. Parking in driveway just past tall hedge and church like sun room.

Seapinks and white sandy beaches, glorious sunsets. Originally from the east coast I am constantly inspired by the dramatic colours of the rugged landscape and seascape of the west. More recently mackerel and bold flowers have found themselves in vivid still life.

W www.carolineplummer.co.uk or
 www.wytrazek.co.uk
E wytrazek@hotmail.com
T 01546 870 208

LIBBY ANDERSON

31



Faces are the most interesting things we see; other people fascinate me, and the most interesting aspect of other people - the point at which we go inside them - is the face. It tells all. Quotation by David Hockney who says what I feel so well.

Opening Arrangements:

Fri 25th to Mon 28th Aug 10am - 5pm.
Visitors welcome after hours or anytime but phone to make sure I am here.

Address: Carnan, Tayvallich
Lochgilphead, Argyll PA31 8PN

Directions: Turn right in the middle of Tayvallich towards Carsaig. Go over the little hill then turn the 3rd right and on to the house in the corner with the steeply pitched roof.

W libbyandersonartist.com
E libbyanderson@mac.com
T 01546 870 660

32

SUSAN BERRY

**Opening Arrangements:**

Fri 25th to Mon 28th Aug 10am - 5pm.
Visitors welcome all year round.

Address: Karswick House
Tayvallich, Lochgilphead,
Argyll PA31 8PN.

Directions: Half way round Tayvallich bay, turn right at Carsaig sign. Just before the sea you will see a white house with red doors on the left. Parking in driveway. Disabled access.

W susanberrysite.com
E otterprints@btinternet.com
T 01546 870 217

Working in watercolour, I am drawn to the shore. From home I follow otters along sheltered sea lochs, scramble over rocky tidelines and trail deer through the stillness of the wood. Days later, the oily silver colour of reflected sky on a wet coat, the breaking sea patterns of mirrored land, might have led to a painting, or not. Visit my studio and gallery to see how it's going.

SNH ART AT THE MILL

33



Art at the Mill #taynish@40
Taynish celebrates 40 years of being a National Nature Reserve during 2017. We are thrilled to be part of the red dot trail again during this special year. We are also absolutely delighted that, the wonderful Artmap Argyll artists are joined this year by two guest sculptors, Pauline Muir and Tom Allan.

W www.snh.gov.uk
E jenny.sinclair@snh.gov.uk
T 01546 603 611
M 07979 575 900

Opening Arrangements:

There are no restrictions to visiting this exhibition.

Address: Scottish Natural Heritage,
1 Kilmory Estate, Lochgilphead,
Argyll PA31 8RR

Directions: Set amongst the restored Mill at Taynallich Hall, keep left and follow the road down to Taynish NRR, park at the Mill Car Park then follow the signs along the path to the mill.

From Taynallich Hall, keep left and follow the road down to Taynish NRR, park at the Mill Car Park then follow the signs along the path to the mill.

34

KIRSTY BRADY

**Opening Arrangements:**

Fri 25th to Mon 28th Aug 10am - 5pm.
By appointment outwith the Open Studio Weekend.

Address: 1 Fernoch, Ford
Kilmichael Glassary, Argyll PA31 8RL

Directions: From the A816 turn into Bridgend, follow the road around until you see a sign for Kilmichael Glen, turn up there drive past the Church and School and continue on the road for 3 miles. I'm the first blue/green wooden house on the right- if you get to a Loch you have gone a wee bit too far.

W www.atouchglass.co.uk
E info@atouchglass.co.uk
M 07748 836 293

This year is an exciting one, as I'm now working full time on my glass. I have taken the 'leap of faith' and enjoying every minute. The extra time and freedom is allowing me to bring new ideas into a reality and not just thoughts in my head. Pop over and see what I am up to in the studio and enjoy a cup of something and cake.



After a career in graphic design, music and then forestry I thought it was time to settle myself down.. and start to paint. It was always something ticking away in the background. What people will see when they visit studio 138 is a chronology, a history of somebody finding their 'own' style. Feel free to drop in. The kettle's on.

W cb.studio138@gmail.com
E 01546 810 337
T 07901 205 645

Opening Arrangements:

Fri 25th to Mon 28th Aug 10am - 5pm.

Address: Studio 138, Kilmichael Glen
 Lochgilphead PA31 8RJ

Directions: From Lochgilphead, turn right towards Oban then turn right after 3 miles at Bridgend/Kilmichael glassary. Keep going up the glen past Loch Leachan. Studio 138 is a wooden clad cabin on the left



Opening Arrangements:

Fri 25th to Mon 28th Aug 10am - 5pm.

Address: 8 Cairnbaan Lea
 Cairnbaan, Argyll & Bute

Directions: From Lochgilphead follow signs to Crinan. As you approach the Cairnbaan Hotel take the road to the right. Number 8 is beside the yellow house.

Born and brought up on Mull, I have an inbuilt love of Scotland's west coast and am inspired by the skies and scenery around me. I graduated from the University of Ulster in 2000 with a BA Hons in fine art and painted sporadically until recently. After a time in the wilderness I have arrived at painting with a new enthusiasm and a love of all things beautiful.

E meiredmond@btinternet.com
M 07720 074 822

THE ARCHWAY

37



The Archway is a family run business supplying art materials, framing and showing the work of Argyll artists for over a decade. We offer a fantastic range of original art, ceramics, glass, jewellery, prints, and gifts. August sees the gallery awash with colour and energy as we host our annual Jolomo exhibition of oil paintings.

Opening Arrangements:

Fri 25th to Mon 28th Aug 10am - 5pm.

Address: 7 Union Street,
Lochgilphead, Argyll PA31 8JS

E info@thearchway.co.uk
T 01546 606 894

THE DOCHAS GALLERY

38



Opening Arrangements:

Fri 25th to Mon 28th Aug 10am - 5pm.

Address: 50 Campbell Street
Lochgilphead PA31 8JU

W www.dochasfund.org.uk
E enquiries@dochasfund.org.uk
T 01546 600 022

The Dochas Centre doubles as a Gallery and Carer's Centre. We exhibit the work of the centre's founder John Paterson as well as exhibitions from local groups and artists. We run support groups and we work closely with all external agencies e.g. Alzheimer Scotland, Parkinson's Society, Macmillan Cancer Support etc. Artmap Argyll Associate Members will be showing in the Dochas Gallery during August.



I work with a combination of process and skills - 2D & 3D - indoors and out. Responding to the landscape and environment is intuitive and keeps me attuned to nature in a physical, mental and challenging way. I enjoy working to themes through both dimensions. Ideas develop through observation and drawing and scrutiny.

E twalker904@btinternet.com
T 01546 603 037
M 07785 524 521

Opening Arrangements:

Fri 25th to Mon 28th Aug 10am - 5pm.
 By appointment during the year.

Address: The Studio on the Brae
 Manse Brae, Stronvay, Lochgilphead
 Argyll PA31 8QZ

Directions: Facing the church at the north end of Argyll Street in the centre of Lochgilphead - take 2nd exit. Follow road up-hill to bend (left) in road. 3rd on the right leads you into Manse Brae (signposted). 100 yards on (shore side) is house and studio. Look for RED dots!



Opening Arrangements:

Fri 25th to Mon 28th Aug 10am - 5pm.

Address: North Lodge, Castleton
 Lochgilphead, Argyll PA31 8RU

Directions: From Lochgilphead on the A83 to Inveraray, drive about 3 miles until you reach the stretch of road with a bus stop on either side, and a sign for Castleton.

I'm in the house directly on the roadside on the right; the one that the sign is pointing at.

After growing up in Argyll, I studied Painting at Gray's School of Art in Aberdeen before returning to the west coast. Spatial awareness and movement are both key features in my work, and I hope to now draw on the inspiration of the landscape and environment of home to further explore and develop these themes.

W www.lauraclarkart.tumblr.com
E l-clark@outlook.com
T 01546 602 231
M 07557 473 859

MELANIE CHMIELEWSKA

41



Inspired by Argyll's wildlife and nature I love to create sculptures which capture the essence of the being or to tell the beginnings of a story.

Opening Arrangements:

Fri 25th to Mon 28th Aug 10am - 5pm.

Address: 1 Ballibeg, Castleton
Lochgilphead, Argyll PA31 8RU

Directions: From Lochgilphead on the A83 to Inveraray. Drive about 3 miles. Directly after the Castleton sign turn left by a stone house. Follow the road up to the top, second house on the right.

W www.melaniechmielewska.co.uk

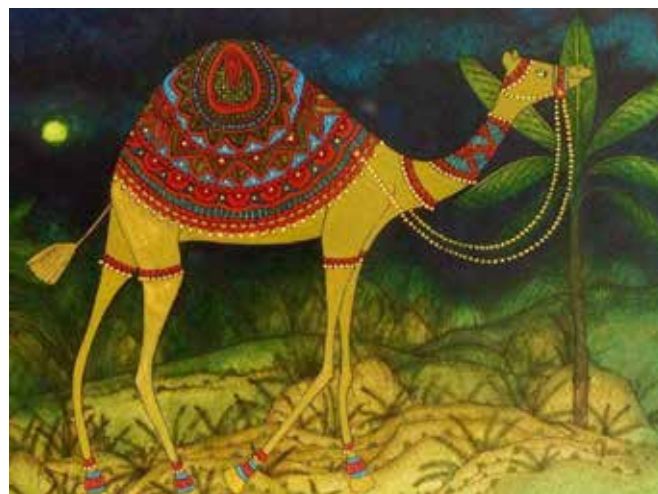
E remel898@btinternet.com

T 01546 606 625

M 07864 573 682

JANICE BRACEY

42

**Opening Arrangements:**

Fri 25th to Mon 28th Aug 10am - 5pm.

Address: Kenmore Top House
Inveraray, Argyll PA32 8XT

Directions: From Inveraray travel 2 miles west on A83 to just past turning to Argyll Caravan Park. After red postbox take shore road for approx 2 miles. Top House is next to road on Left. From Lochgilphead take A83 east for 15 miles. Turn right into Furnace and continue on shore road through quarry and on for approx 2 miles. Top House is next to road on right.

I trained as a textile designer and won the Royal Society of Arts Award: Home Furnishings in 1992 but my first love is painting. That's why, when I had the opportunity, I moved to Argyll to establish my own studio in an old croft overlooking Loch Fyne. I love the inspiration this gives me, and, working with watercolour and gouache I create local landscapes, caricatures and other more exotic work.

E janicebracedesigns@hotmail.co.uk

T 07799 545 032

M 01499 302 005

AUCHINDRAIN

43



Auchindrain is a museum representing an important part of Scotland's past. Step back in time and discover Scotland's rural history in the most complete and well-preserved example of a Scottish Highland farm township. Vividly imagine life in the old Highlands as you walk through the settlement and see how ordinary people lived and worked. In the shop you can view art and crafts by local Artmap Argyll artists.

Opening Arrangements:

Fri 25th to Mon 28th Aug 10am - 5pm.
See website for details

Address: Auchindrain, Inveraray,
Argyll, PA32, 8WD

Directions: Auchindrain is on the
A83, six miles south of Inveraray.

W www.auchindrain.org.uk

E info@auchindrain.org.uk

T 01499 500 235

44

WILMA MACKENZIE

**Opening Arrangements:**

Fri 25th to Mon 28th Aug 10am - 5pm.
Monday to Saturday 10am - 5pm
all year.

Address: East Most Store, Harbour
Street, Tarbert, Argyll PA29 6UD

Directions: The workshop is located
on the south side of Tarbert Harbour
opposite the Fish Quay. Follow road
to Cowal Ferry.

E wilma.mackenzie60@yahoo.com

T 01880 821 234

M 07876 212 888

Wilma is a full time glass engraver. Using either copperwheel or diamond drill, each piece is completely unique. Wilma has been engraving since 1977 (when she started as an apprentice with Edinburgh Crystal) and specialises in engraving wildlife and calligraphy-inspired designs.



Ann trained at Plymouth and Cardiff and was both a lecturer and supervisor of art. After marrying she moved to Scotland where she had a gallery for 26 years producing, displaying and selling a wide range of her work. Ann is renowned for her strong compositions, draftsmanship and use of paint to capture the ethereal quality of changing light and colour so memorable in Scotland's powerful landscapes, seas and skies.

Opening Arrangements:

Fri 25th to Mon 28th Aug 10am - 5pm.
Open to visitors all year round by appointment.

Address: Harbour Heights, 4 The Ridge, Barmore Road, Tarbert, Argyll

Directions: Entering Tarbert from Lochgilphead on the A83 turn left immediately after the 30mph sign. Bear right up hill to the last but one bungalow.

W www.annthomas-paintings.co.uk
E ann@annthomas-paintings.co.uk
T 01880 820 724



Opening Arrangements:

Fri 25th to Mon 28th Aug 10am - 5pm.
You can visit Richard in his gallery and studio from May until late September - 11.00am to 5.00pm. He is open Wednesday to Sunday but will be available for all of the Artmap Weekend. Along with his wood art, Richard also displays a range of other Artmap artists' work. Live demonstrations available over the Artmap weekend and frequently throughout the season!

Directions: From Lochgilphead turn south towards Campbeltown (A83) After 4 miles turn right, signposted Kilberry (B8024).
From Tarbert travelling in either direction take the turn signposted Kilberry (B8024) Enjoy incredible views and possible sightings of Argyll's best wildlife!

Winner of 'Craft and Design' magazine's selected maker of the year wood and metal category, Richard has been creating Wood Art for several years. Each piece takes several weeks to make due to the intricate detail. Richard has made work that's displayed around the world. A member of the Register of Professional Turners, he is committed to producing some of the finest turned art available in the country today.

Address: Bole the Gallery, Fieldhouse Kilberry, Argyll PA29 6YD.

W bolethegallery.com
facebook.com/bolethegallery
E enquiries@bolethegallery.com
T 01880 770 202



The long and winding road south on the Kintyre peninsula is one of the most scenic drives in Scotland. Views over sandy beaches or rocky shores to distant islands in wild or tranquil weather provide inspiration for Christine's paintings. There are many sculptures set amongst the huge selection of plants in the 5 acre An Ceardach garden surrounding Christine's studio.

Address: An Ceardach - The Smiddy Peninver, Campbeltown, Argyll PA28 6QP

W www.wix.com/anceardach/gallery
E christinedianarussell@binternet.com
T 01586 551 762

Opening Arrangements:

Fri 25th to Mon 28th Aug 10am - 5pm.
 The An Ceardach 5 acre garden is open from April to October. Visitors are very welcome during this period by appointment outside the open weekend.
 Tea, coffee and shortbread will be available at the open weekend with proceeds going to Campbeltown Picture House.

Directions: 3 miles north of Campbeltown, on the B842 Carradale Road pass a 40mph sign. 200 yards further on, down a steep hill, take the entrance on the right following the tarred driveway. Parking for 6 cars.



Opening Arrangements:

Fri 25th to Mon 28th Aug 10am - 5pm.
 Other opening arrangements:
 June 4th to September 30th
 Thurs - Sun 11 - 6pm
 Closed Mon and Tues
 Wednesday by appointment only.
 Admission Adults £5.
 Children free under 16.
 Dogs welcome on a lead.

Address: Caol Ruadh Scottish Sculpture Park, Colintraive, Argyll, PA22 3AR

Directions: See website for directions

Set in a spectacular 20 acre garden on the Kyles of Bute, Caol Ruadh Sculpture Park exhibits and sells contemporary outdoor sculpture.

Throughout the summer, visitors can wander around the garden, among classical and abstract sculpture created in stone, wood, metal and organic materials by internationally renowned sculptors. The beauty of the garden, the dramatic views and soft sea light offer a setting unlike any other for outdoor sculpture.

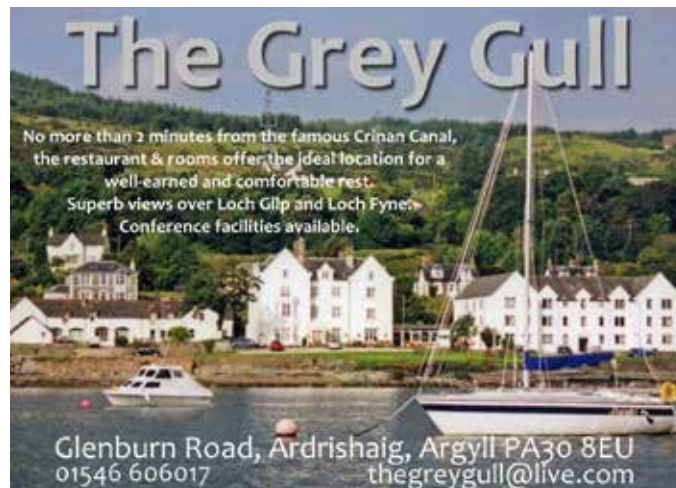
W www.scottishsculpturepark.com
E info@scottishsculpturepark.com
M 07771 996 656
T 01700 841 357



W www.seatreecrafts.co.uk
E hello@seatreecrafts.co.uk
M 07895 383 751
T 01369 830 625

Open 10-5 each day of Artmap.
Workshops also available:
11-12 and 2-3 have a go at making a wee pinch pot.
Free event (or if you love your pot, pay £5 to have it fired, postage by arrangement).
You are welcome to contact us at other times to arrange a workshop or studio visit.

Directions: Into Innellan, opposite the Village Hall turn up the hill past the Villagers Royal. At the top of the hill take a left turn into Wyndham Road. Southview is on the left, about six houses along after the church.



BOOKS STATIONERY GAMES TOYS

If we don't have it in stock,
we can order it in for you...

Happy to help

Local Visitor Information Point in the Bookshop



ARGYLL
BOOK
CENTRE

Lorne Street
Lochgilphead
Argyll PA31 8LU

Tel: 01546 603596

Email: argyllbookcentre@gmail.com

fb: Lochgilphead Bookshop

THE SQUARE PEG

FIND SOMETHING



OFFICIAL CHARLIE BEARS STOCKIST

GIFTS - TOYS - CARDS - SNACKS

Original and thoughtful gift ideas, toys and
greetings cards. Home-baking and take-away
lunches freshly prepared daily



0 1 5 4 6 - 6 0 2 4 4 5

online at: www.whositfor.co.uk

Andrew and Jilly Wilson · The Square Peg · Colchester Square · Lochgilphead

Cairnbaan Hotel

On the Crinan Canal



Real Ales

Real Food

Real Welcome

www.cairnbaan.com

01546 603668



Don't leave Argyll without visiting
Don't leave Argyll without visiting

KILMARTIN HOTEL



By Lochgilphead PA31 8RQ
Proprietor: Richard Pate

A homely atmosphere
in a family run hotel
offering an extensive choice
of wholesome fayre with
traditional Scottish and
seafood dishes taking pride
of place.

Tel: 01546 510 250 Email: kilmartinhotel@googlemail.com

Open Studios



Follow the

Bute Studio Trail

by IBAC

Sat 22nd & Sun 23rd
July 2017

10am-5pm each day
free admission

Follow the yellow balloons
to visit our talented
creatives in their spaces
across the Isle of Bute



www.butestudiotrail.com

Best of the West FESTIVAL

INVERARAY CASTLE

SEPTEMBER 2017

FRIDAY
EVENING
NEW FOR
2017

FRIDAY 8th

SKIPINNISH
HERON VALLEY

#BOWFest2017

SATURDAY 9th

SKERRYVORE
BLAZIN' FIDDLES
HUNTER & THE BEAR

SUNDAY 10th

EDDI READER
TIDE LINES
DR HIP & THE BLUES OPERATION



PLUS... FOOD FROM ARGYLL • LOCH Fyne WHISKY MARQUEE
ARTISAN LABERS AND WHEAT BEERS FROM WEST BREWERY
WEST COAST CRAFTS • LOCAL MICHELIN CELEBRITY CHEFS,
PAUL LEONARD & GRAEME CEEVERS • CHILDREN'S ENTERTAINMENT

SUPER EARLY-BIRD TICKETS

ON SALE 4th MARCH at 3.00pm

LIMITED AVAILABILITY

Tickets available from bowfest.co.uk



The Jetty Gallery

Open Mon, Fri, Sat 10 – 5pm Wed, Thurs 10 – 2.30pm

Featuring an ever changing collection of original artwork by established & emerging artists - Paintings, Sculpture, Ceramics, Wood, Glass and Jewellery.

Prices ranging from small crafts at £10 – fine art up to £6,000

100, George St, Oban, Argyll PA34 5NR

Tel: 01631 570 102 www.thejettygallery.com



Landscapes

Lampshades

Lessons

NEEDLESMITHS

Practical, relaxed, creative, textile workshops for adults and children

Learn to use your sewing machine, creative textile techniques, after school clubs

Kate MacDonald

Textile Artist, Unique lampshades, Commissions welcomed



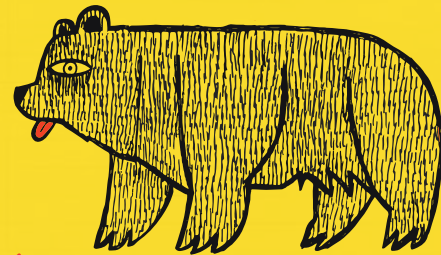
W: needlesmiths.co.uk

E: needlesmiths@mail.com

we loveart

almostasmuchas

we lovefood



MARMALADE DELI

PURVEYORS OF YUMMY FOOD

11 Argyll Street, Lochgilphead, PA31 8LZ

+44 (0)1546 606 292

orders@marmaladedeli.com

www.marmaladedeli.com

Bespoke decorative and wearable felt designs,
handcrafted by Hazel Ewart-Mills.



HAZELMADEIT

Workshops available Commissions welcomed



m: 07974259728 e: hazelmadeit@yahoo.co.uk

www.hazelmadeitposts.tumblr.com

Also find **Hazelmadeit** on Twitter, Facebook & Folsky



Now in its sixth year, this is a unique opportunity to see not only the inimitable landscape of Scotland's 'island gem' but up to 39 participating artists and makers. Paintings, sculpture, ceramics, jewellery, printing, wood turning, and fine furniture making,

August 11th, 12th, 13th and 14th inclusive.

Phone 01770 820373 for more details

Or visit the website...www.arranopenstudios.com




Heart For Art

Free Dementia Friendly Art Classes

Garelochhead church
 Old School Rd.
 Fortnightly
 1-3pm

Tea & cake provided
 Come along for a chat
 or get in touch for
 more information

No previous art skills
 needed.
 Art Tutors are on
 hand to help!



heartfor.art@crossreach.org.uk
 0141 630 3092

The Church of Scotland
 Social Care Cowall
 1000 Stirling Road, Stirling FK8 1LJ

CROSSREACH
 providing a caring future

Facebook icon, Twitter icon, Life Changes Trust logo



Exciting Fresh Work from
 New and Established Artists

**COWAL
 open
 studios**

22nd - 25th September 2017

www.cowalopenstudios.co.uk

1 MAN 12 DAYS 32 CHALLENGES

Find out more about
Mark Beaumont's
Wild About Argyll
epic challenge and
plan your own
adventure at
wildaboutargyll.co.uk

**WILD ABOUT
ARGYLL**

Credits to Kieran J Duncan



Whitehouse Studio Art Holidays

A guided art experience on the stunning West Coast of Scotland



For full details of courses for 2017 visit - www.whitehouseart.co.uk

ARTMAP ASSOCIATE MEMBERS 2017/18



Andrew McCallum Jewellery

Design and manufacture of all types of jewellery
including Scottish and Celtic, Animal,
Designer and Fine pieces.
www.andrewmccallumjewellery.com
Tel: 01866 844 355



Robyn Glendinning

A graduate from Illustration at DJCAD in
Dundee, Robyn currently works as a graphic
and 3D product designer at a local company.
Her work varies from graphic novels and pattern
design to stop film animation and traditional
printmaking. Open for commissions
robynglendinning@gmail.com
07768 122 539
www.robynglendinning.com

ARTMAP ASSOCIATE MEMBERS 2017/18



Alan Cunningham
Mixed media construction, Lochgair
3D wall mountable and suspended work with
a maritime theme, often based on historic and
literary narratives.
07879 241 156
traighean@gmail.com



Victoria Maxwell Macdonald
Artist, Kintyre
Oil paintings of land, sea and sky
www.victoriamaxwellmacdonald.co.uk



Lucinda Hopkinson
Glass Designer, Kilmichael Glen
"I aim to preserve molten fluidity in my fused glass
art work. I constantly experiment, often incorporating
metals and encouraging bubbles."
01546 606 596
lhopkinson@btconnect.com
www.facebook.com/Lucinda-Hopkinson-Glass
www.fusedglassartist.co.uk



Ken Simm
Fine Art Painting & Photography
www.kenart.co.uk
Tel 07879 208 752



Alexander Hamilton,
Mixed media compiler of this and that.
www.studiobarnargyll.co.uk.
hamiltonargyll@btinternet.com
Alexander & Polly Hamilton,
Leac na Ban, Tayvallich, Lochgilphead,
Argyll, PA31 8PF
01546 870 310

ARTMAP ASSOCIATE MEMBERS 2017/18



Susannah MacMillan
Drawing and Painting, Keills, Tayvallich .
01546 870 610
susannahmacmillan@btinternet.com



~ in the fields' work is based on our enthusiasm
for natural phenomena, environmental issues and
poetic moments.
Contact details: ~ in the fields • artist collective
studio@in-the-fields.org



George John Stewart
Artist and Illustrator, currently illustrating a book
on Kilmartin Glen, a follow-up to 'A Shrew Danced
On My Paintbox' about the Crinan Canal
W. www.lovedovecottage.com
E. dovecottagestudio@gmail.com
T. 01546 510 289
M. 07493 523 530



Jane Allan
Basketmaker, Achnamara
Traditional baskets handcrafted from homegrown
willow in natural colours. Tuition, commissions and
sales. Workshop open by arrangement. Seafeld Farm
Cottages, Achnamara Lochgilphead Argyll PA31 8PS
Tel: 01546 850 274 Mobile: 07884 073 010
seafeld3@btinternet.com
www.seafeldfarmcottages.co.uk



Elma Nee
Painter of Land and Seascapes
elmaneesell@gmail.com

ARTMAP ASSOCIATE MEMBERS 2017/18



Gill Stewart
Artist and Flower Stylist for weddings
and events.

W. www.gillstewartflowerscape.com
E. lovedovecottage@gmail.com
T. 01546 510 289
M. 07493 514 261



Sara Qualter
Set designer & Stylist.

Ormistons cottage, Duntrune, Kilmartin
Lochgilphead PA318QQ

Web; www.saraqualter.co.uk

Tel: 07876 193 083

I am an Interior, event & web stylist. As a set designer, I have had work with collaborative artist Bill Baillie, exhibited at the Royal Academy of Art in London & Scottish Royal Academy of art in Edinburgh. Recently I have started developing a photographic journal of my travels & adventures.



Pip Weaser

Pip Weaser uses basketry techniques to make functional and decorative objects from all sorts of local plant fibres and recycled materials.

T: 01852 200 260 M: 07876 413 557.

E: pip.weaser@talk21.com



Peter Davies
Painter, Ford

petericharddavies@yahoo.co.uk



Fergus Murray.
Drawing, Lochgilphead

Fergus's artwork focuses on making detailed drawings of pencil, pen and ink - inspired by the Argyll landscape, people and buildings.

01546 600 267

fergusmurray@btinternet.com



Lesley Burr - Scottish Contemporary Artist

**Studio visits are welcomed throughout
the year by appointment**

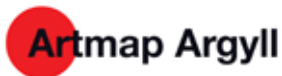
Contact - artistlesleyburr@gmail.com

or

07917567268

www.lesleyburr.co.uk





Artmap needs YOU!

Artmap is Argyll's leading network of artists and we're looking for new members and friends to join us.

Our vision is to ensure that Argyll is recognised as a vibrant, creative hub. We deliver a range of events, public art installations and workshops as well as supporting artists to share ideas and grow sales.

Our annual Red Dot Studio Trail is Argyll's premier visual arts event and last year we had over 5,600 studio visits resulting in £47,000 worth of sales – providing a huge boost to the local economy.

With year on year increases in studio visitors and sales, we're looking for new artists to join us so we can help you share your work to a wider audience.

Artmap is a social enterprise company committed to returning funds raised for the benefit of Argyll's communities through cultural activities.

If you are an artist or you want to help support our work there are a three ways to get involved:

- Full member £140
- Associate member £30
- Friend £15

For full details on the benefits of joining us email for an information pack

Email: members@artmapargyll.co.uk

We are indebted to and extremely grateful for the continued support from:

Argyll & Bute Council, AITC, Heart of Argyll Tourism Alliance, Ardrishaig Community Trust, Ardrishaig Community Council, Forestry Commission Scotland, Scottish Canals, Scottish Waterways, Scottish Natural Heritage, Kilmartin Museum, Creative Scotland, Calmac, talc. and ACT .

We look forward to exciting new projects in 2017/18.

Many thanks to the Dochas Fund for the use of the gallery for meetings and exhibitions and also to Scottish Canals for our regular use of the meeting room at Pier Square, Ardrishaig during the past year. We are also thankful to our volunteers, partners, spouses and families for their support throughout the year.

Disclaimer:

Please use the map and directions in conjunction with your own road maps.

Artmap Argyll accepts no liability for any loss, damage or injury sustained by any member of the public visiting any venue participating in the open studio event listed in this brochure. Visiting adults are responsible for the supervision of any children in their care. It is not permissible to take pets of any sort into the venue areas.

It is the venue's responsibility to have public liability cover. Whilst every effort is made by artists to ensure that the venues are as safe as possible, visitors should be aware that the studios are working environments and can be dangerous places. Great care must be exercised when visiting as there may be hazardous substances and/or tools and powerful machinery.

Please treat all venues with respect and remember that many of the artists work from home.

Contact:
admin@artmapargyll.co.uk

Follow us on facebook & twitter:
facebook.com/artmap
twitter.com/artmapArgyll

